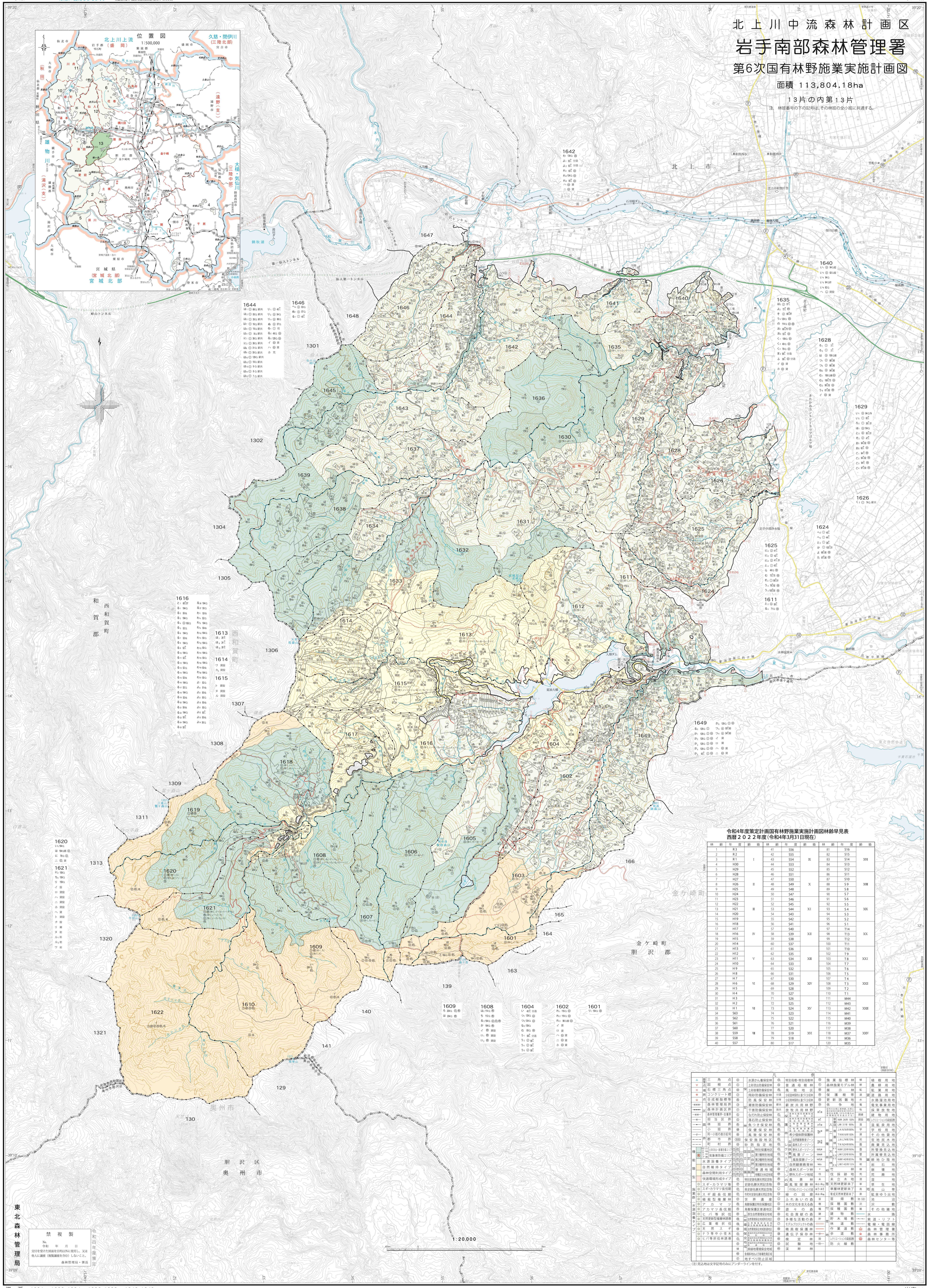
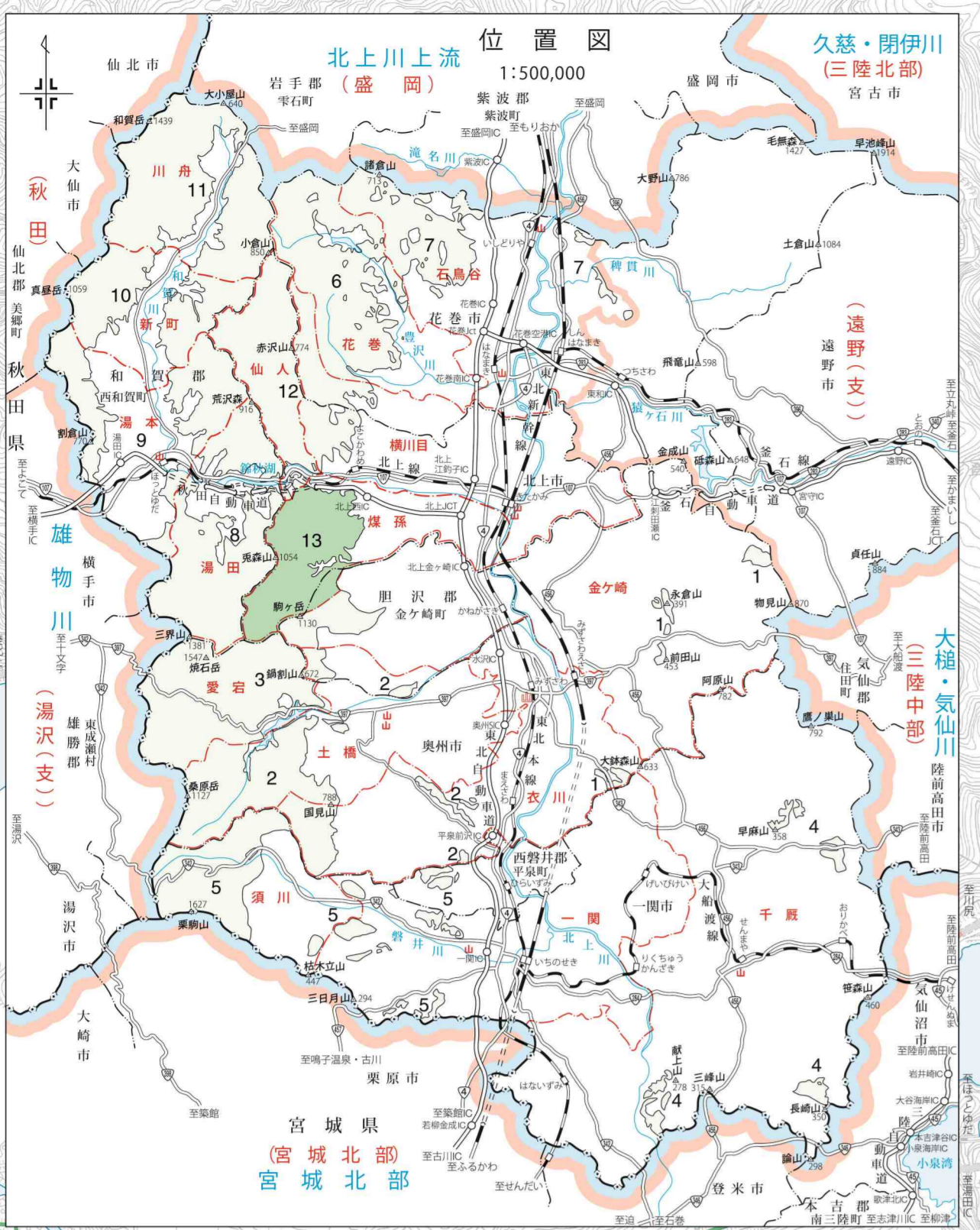


北上川中流森林計画区 岩手南部森林管理署 第6次国有林野施業実施計画図

面積 113,804.18ha
13片の内第13片

注：林野番号の下の記号は、その林野の小班に共通する。



Legend for planning area 1644, listing forest types and their corresponding symbols.

Legend for planning area 1646, listing forest types and their corresponding symbols.

Legend for planning area 1642, listing forest types and their corresponding symbols.

Legend for planning area 1635, listing forest types and their corresponding symbols.

Legend for planning area 1628, listing forest types and their corresponding symbols.

Legend for planning area 1629, listing forest types and their corresponding symbols.

Legend for planning area 1626, listing forest types and their corresponding symbols.

Legend for planning area 1625, listing forest types and their corresponding symbols.

Legend for planning area 1611, listing forest types and their corresponding symbols.

Legend for planning area 1649, listing forest types and their corresponding symbols.

Legend for planning area 1620, listing forest types and their corresponding symbols.

Legend for planning area 1621, listing forest types and their corresponding symbols.

Legend for planning area 1620, listing forest types and their corresponding symbols.

Legend for planning area 1609, listing forest types and their corresponding symbols.

Legend for planning area 1608, listing forest types and their corresponding symbols.

Legend for planning area 1604, listing forest types and their corresponding symbols.

Legend for planning area 1602, listing forest types and their corresponding symbols.

Legend for planning area 1601, listing forest types and their corresponding symbols.

令和4年度策定計画国有林野施業実施計画図林齢見込表
西暦 2022年度 (令和4年3月31日現在)

林野番号	林種	面積	林齢	林種	面積	林齢
1	R1	41	S56	11	H23	51
2	R2	42	S55	12	H22	52
3	R11	43	S54	13	H21	53
4	R12	44	S53	14	H20	54
5	H29	45	S52	15	H19	55
6	H28	46	S51	16	H18	56
7	H27	47	S50	17	H17	57
8	H26	48	S49	18	H16	58
9	H25	49	S48	19	H15	59
10	H24	50	S47	20	H14	60
11	H23	51	S46	21	H13	61
12	H22	52	S45	22	H12	62
13	H21	53	S44	23	H11	63
14	H20	54	S43	24	H10	64
15	H19	55	S42	25	H9	65
16	H18	56	S41	26	H8	66
17	H17	57	S40	27	H7	67
18	H16	58	S39	28	H6	68
19	H15	59	S38	29	H5	69
20	H14	60	S37	30	H4	70
21	H13	61	S36	31	H3	71
22	H12	62	S35	32	H2	72
23	H11	63	S34	33	H1	73
24	H10	64	S33	34	R1	74
25	H9	65	S32	35	R2	75
26	H8	66	S31	36	S81	76
27	H7	67	S30	37	S82	77
28	H6	68	S29	38	S83	78
29	H5	69	S28	39	S84	79
30	H4	70	S27	40	S85	80
31	H3	71	S26			
32	H2	72	S25			
33	H1	73	S24			
34	R1	74	S23			
35	R2	75	S22			
36	S81	76	S21			
37	S82	77	S20			
38	S83	78	S19			
39	S84	79	S18			
40	S85	80	S17			

林野番号	林種	面積	林齢	林種	面積	林齢
1	R1	41	S56	11	H23	51
2	R2	42	S55	12	H22	52
3	R11	43	S54	13	H21	53
4	R12	44	S53	14	H20	54
5	H29	45	S52	15	H19	55
6	H28	46	S51	16	H18	56
7	H27	47	S50	17	H17	57
8	H26	48	S49	18	H16	58
9	H25	49	S48	19	H15	59
10	H24	50	S47	20	H14	60
11	H23	51	S46	21	H13	61
12	H22	52	S45	22	H12	62
13	H21	53	S44	23	H11	63
14	H20	54	S43	24	H10	64
15	H19	55	S42	25	H9	65
16	H18	56	S41	26	H8	66
17	H17	57	S40	27	H7	67
18	H16	58	S39	28	H6	68
19	H15	59	S38	29	H5	69
20	H14	60	S37	30	H4	70
21	H13	61	S36	31	H3	71
22	H12	62	S35	32	H2	72
23	H11	63	S34	33	H1	73
24	H10	64	S33	34	R1	74
25	H9	65	S32	35	R2	75
26	H8	66	S31	36	S81	76
27	H7	67	S30	37	S82	77
28	H6	68	S29	38	S83	78
29	H5	69	S28	39	S84	79
30	H4	70	S27	40	S85	80
31	H3	71	S26			
32	H2	72	S25			
33	H1	73	S24			
34	R1	74	S23			
35	R2	75	S22			
36	S81	76	S21			
37	S82	77	S20			
38	S83	78	S19			
39	S84	79	S18			
40	S85	80	S17			

東北森林管理局
令和4年3月31日現在
交付後必ず於所管官報に掲載し、又は
個人に譲渡（複製権を有しない）をしないこととする。