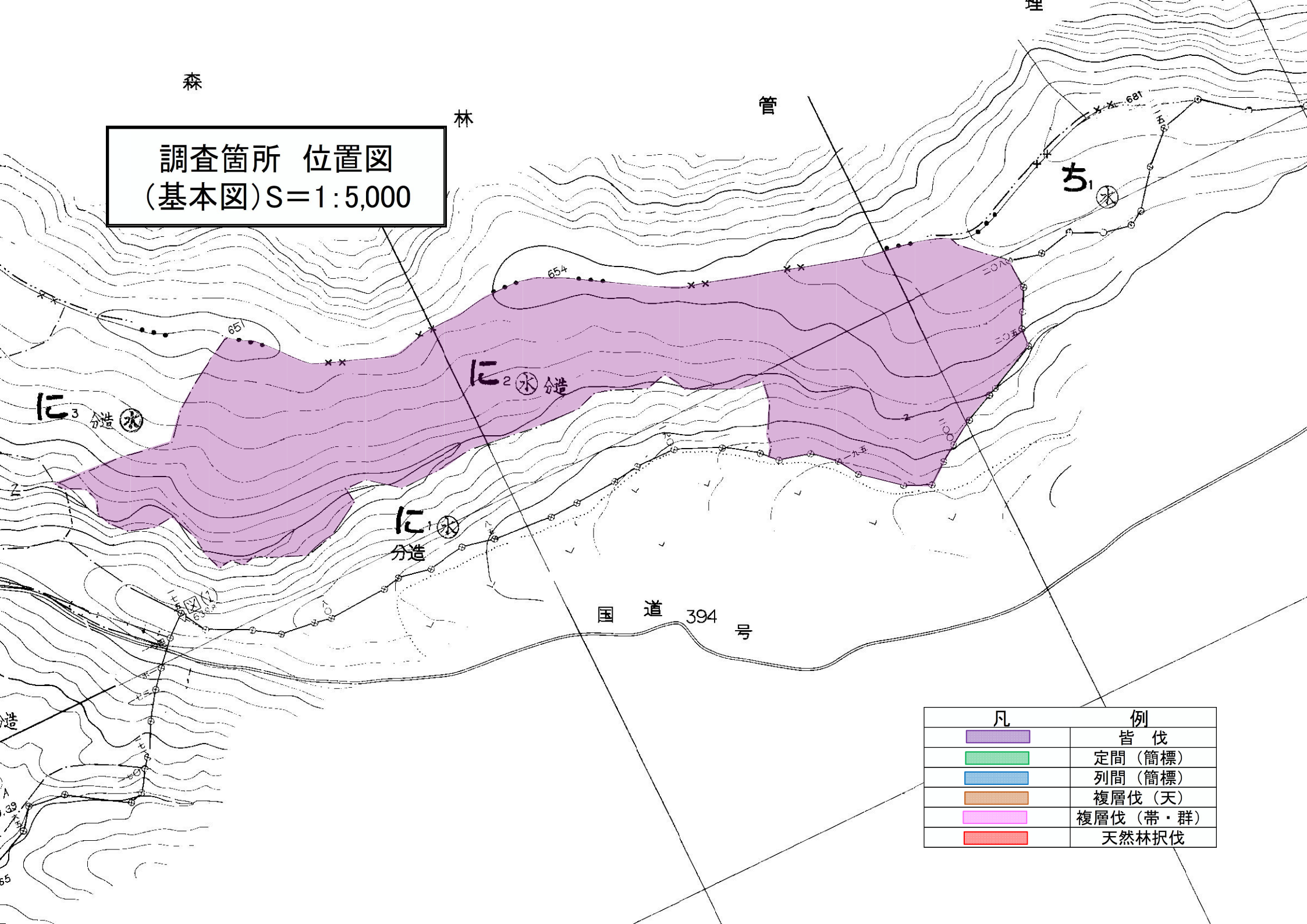








森

林

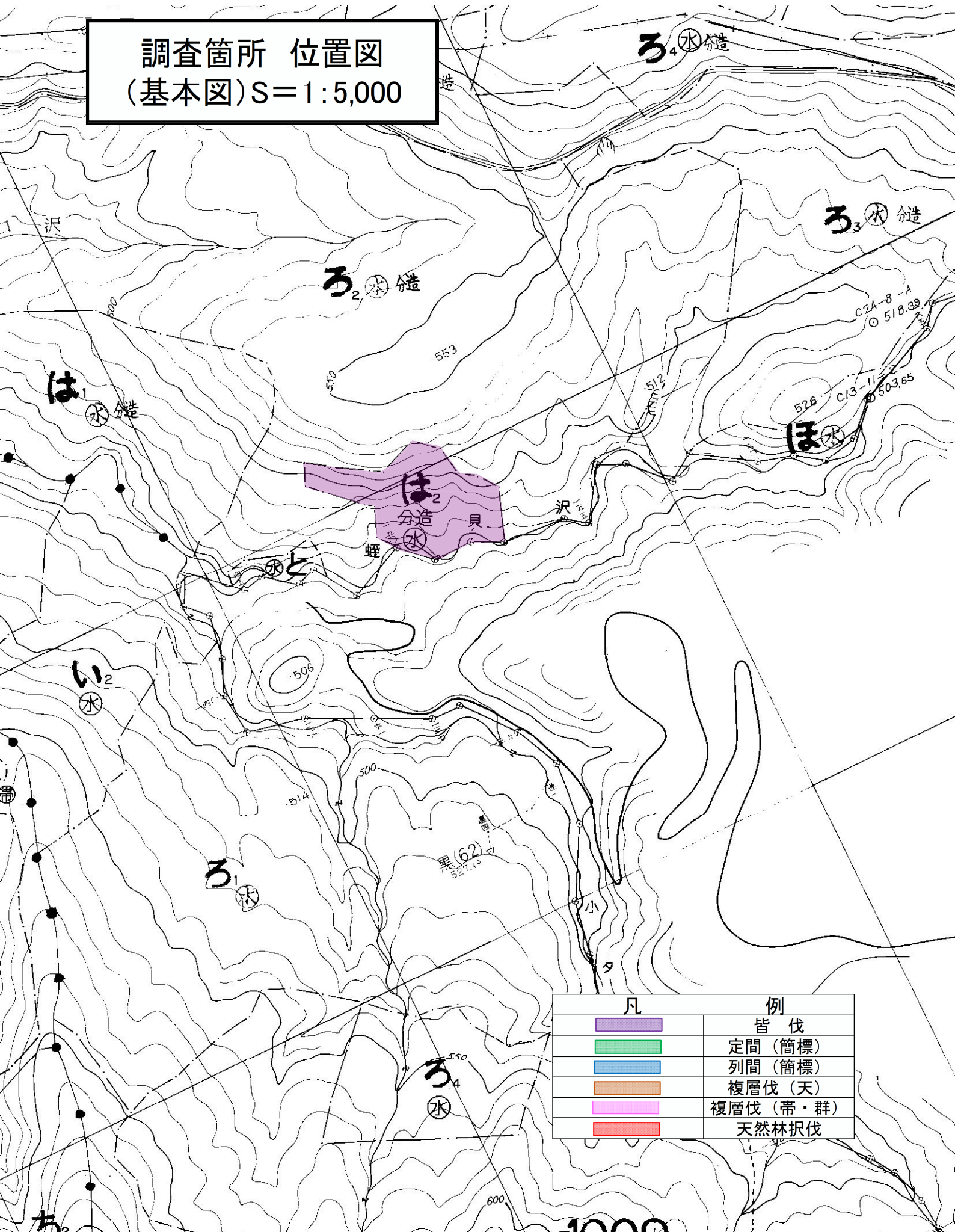
管







調査箇所 位置図
(基本図) S=1:5,000



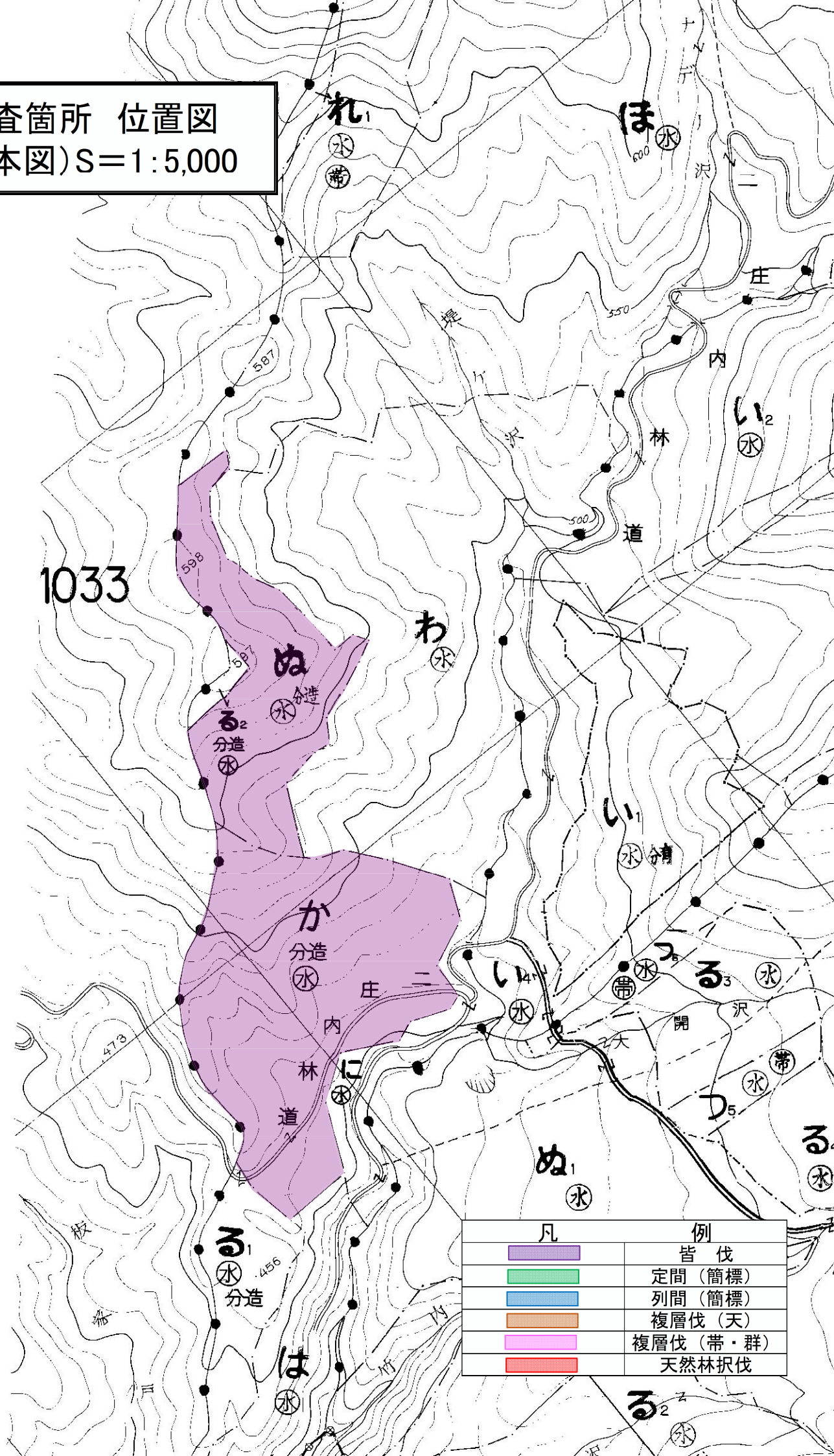
凡	例
	皆伐
	定間 (簡標)
	列間 (簡標)
	複層伐 (天)
	複層伐 (帯・群)
	天然林択伐

調査箇所 位置図
(基本図) S=1:5,000



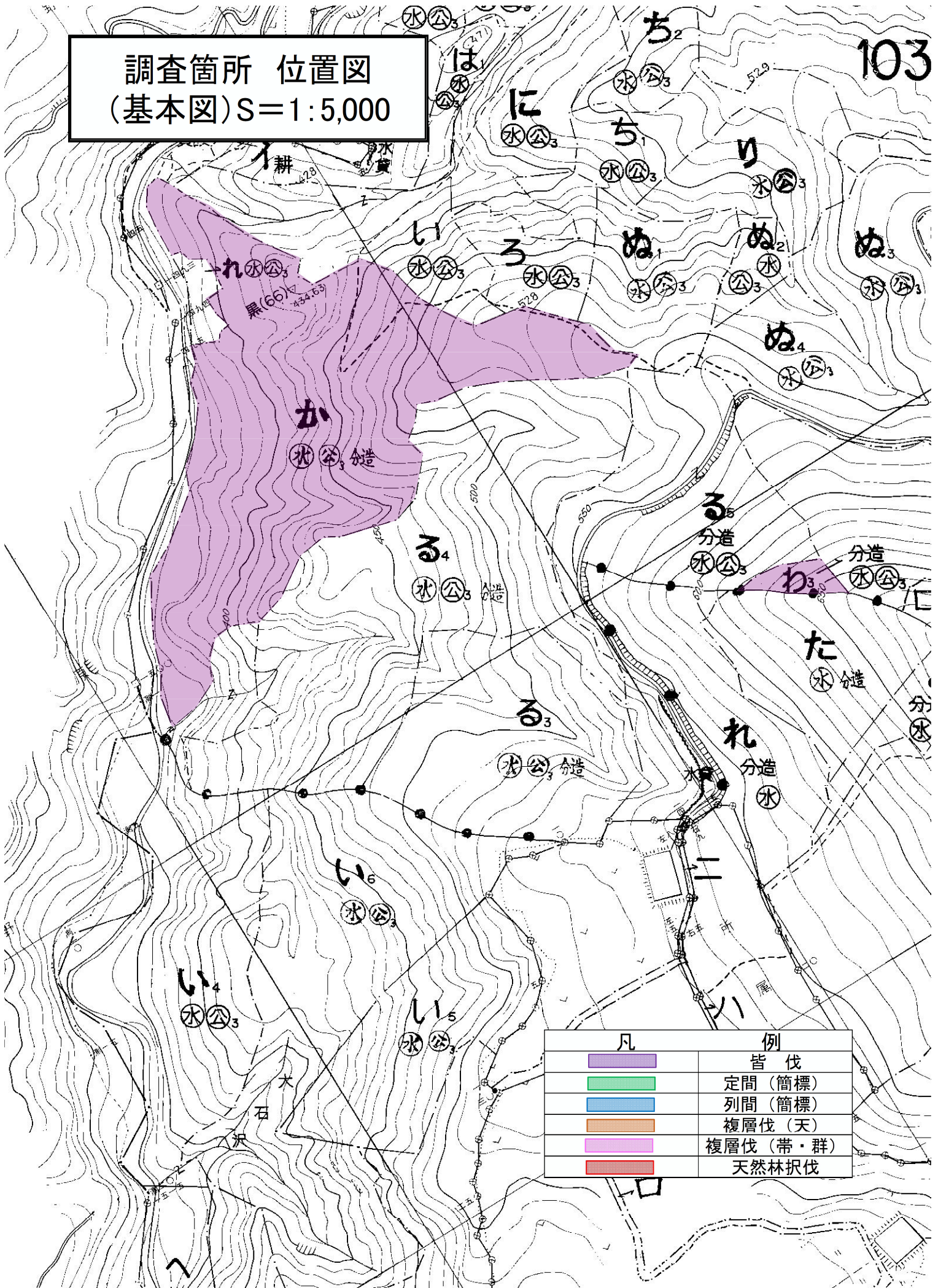
凡	例
	皆 伐
	定間 (簡標)
	列間 (簡標)
	複層伐 (天)
	複層伐 (帯・群)
	天然林択伐

調査箇所 位置図
(基本図) S=1:5,000

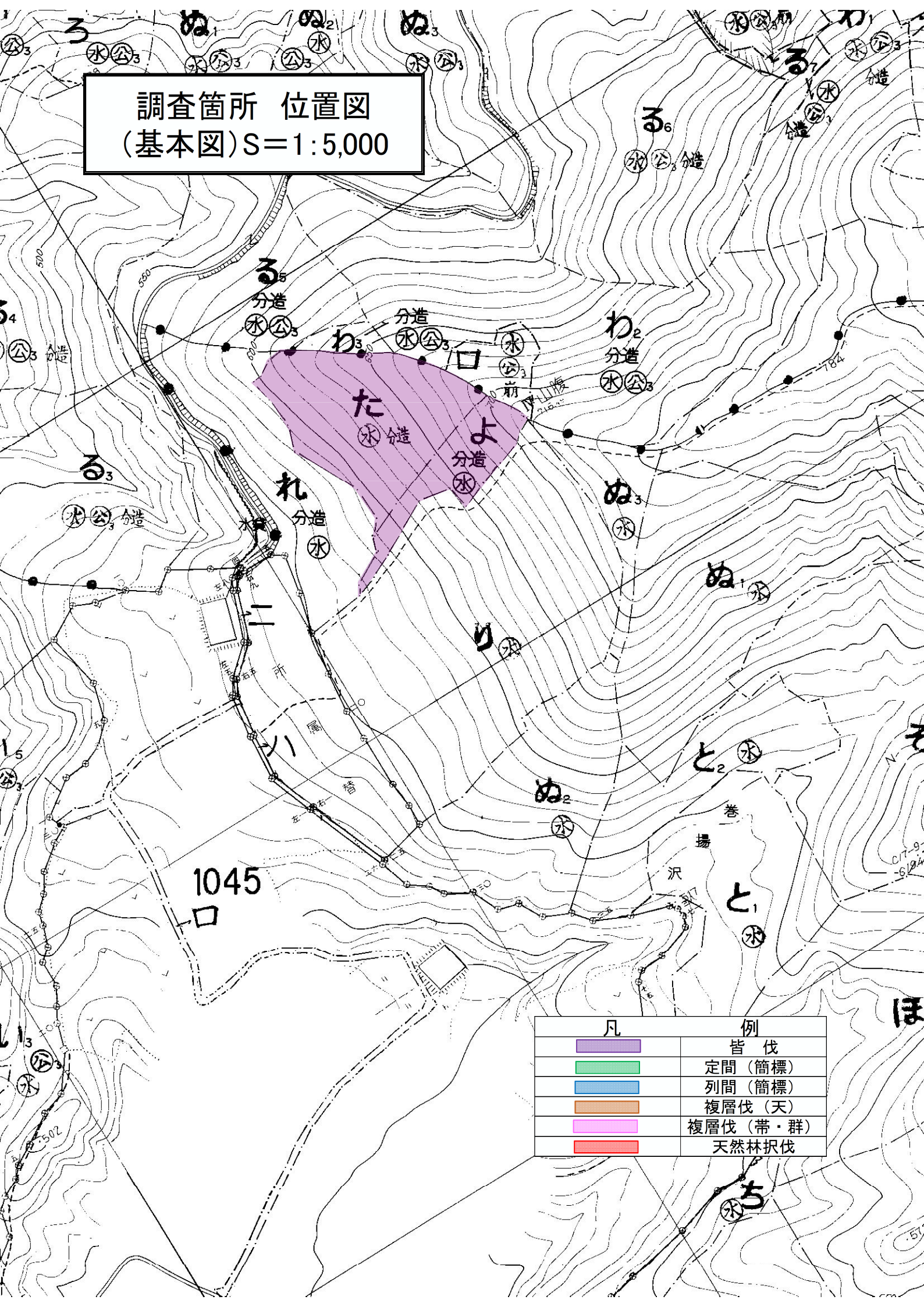


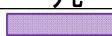





凡	例
	皆伐
	定間 (簡標)
	列間 (簡標)
	複層伐 (天)
	複層伐 (帯・群)
	天然林択伐

調査箇所 位置図
(基本図) S=1:5,000

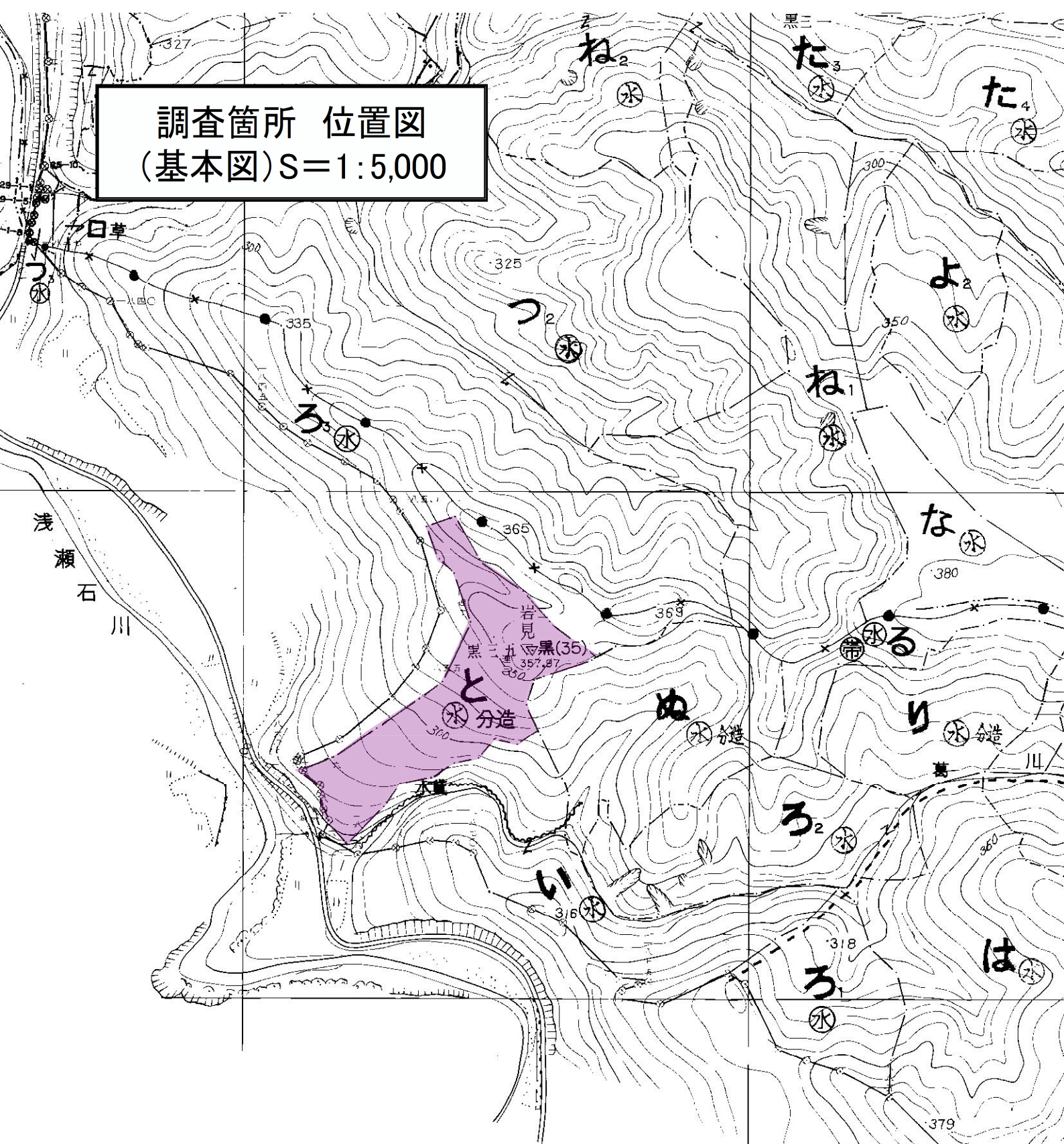


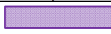





調査箇所 位置図 (基本図) S=1:5,000



凡	例
	皆伐
	定間 (簡標)
	列間 (簡標)
	複層伐 (天)
	複層伐 (帯・群)
	天然林択伐

調査箇所 位置図
(基本図) S=1:5,000

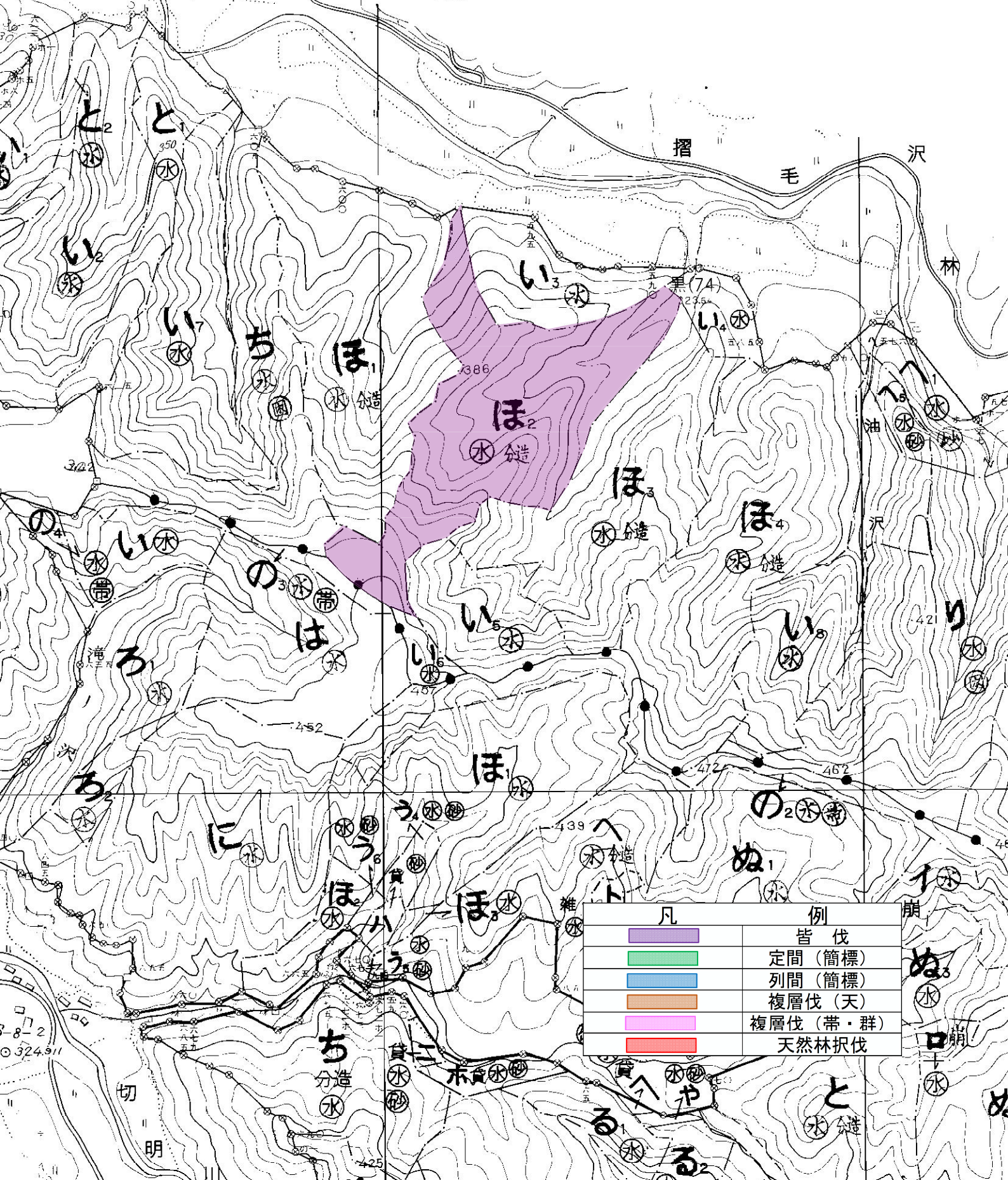


凡	例
	皆伐
	定間 (簡標)
	列間 (簡標)
	複層伐 (天)
	複層伐 (帯・群)
	天然林択伐

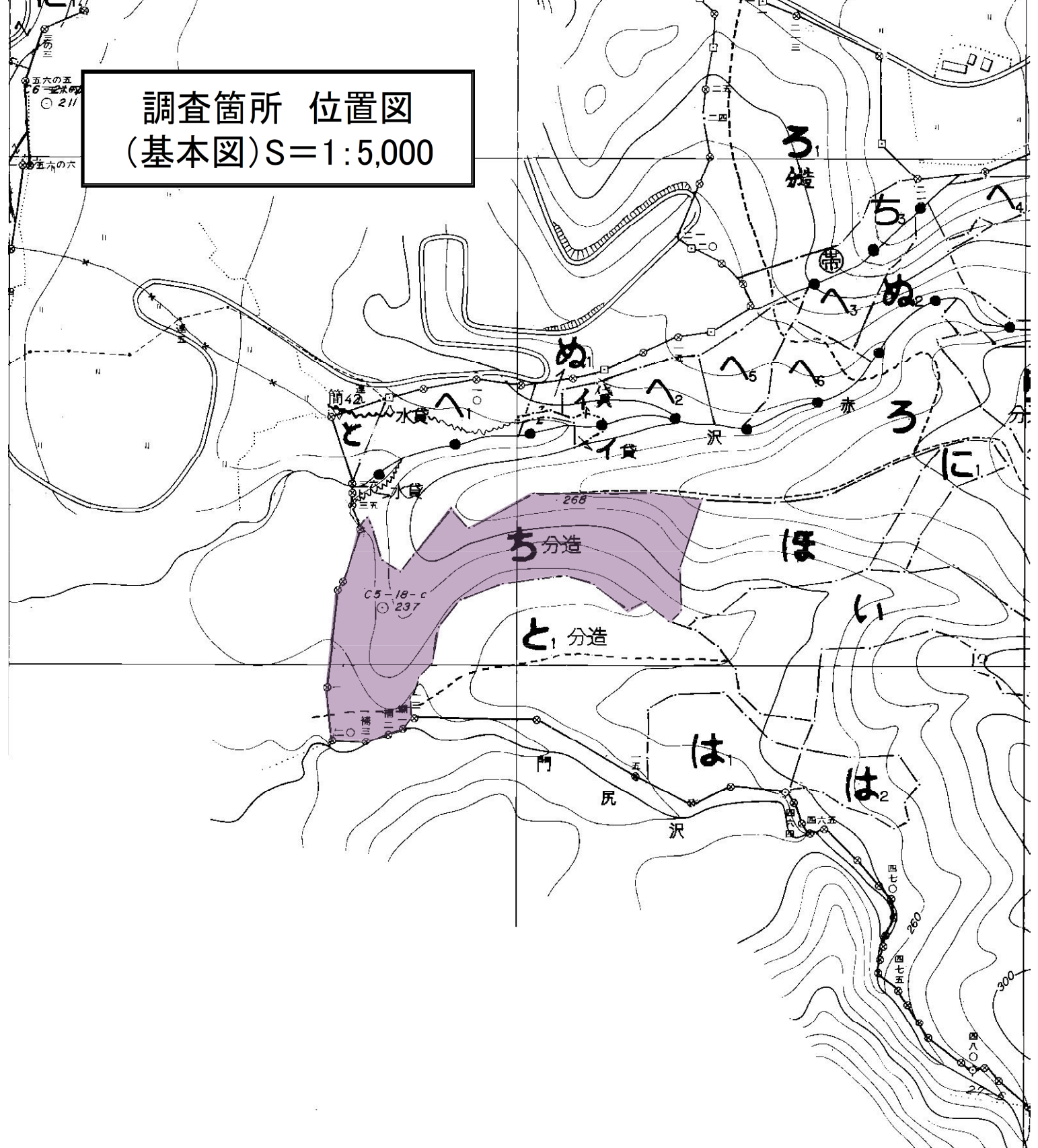
調査箇所 位置図
(基本図) S=1:5,000

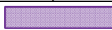



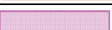

9011
0011.8601

関係林小班



調査箇所 位置図
(基本図) S=1:5,000



凡	例
	皆伐
	定間 (筒標)
	列間 (筒標)
	複層伐 (天)
	複層伐 (帯・群)
	天然林択伐