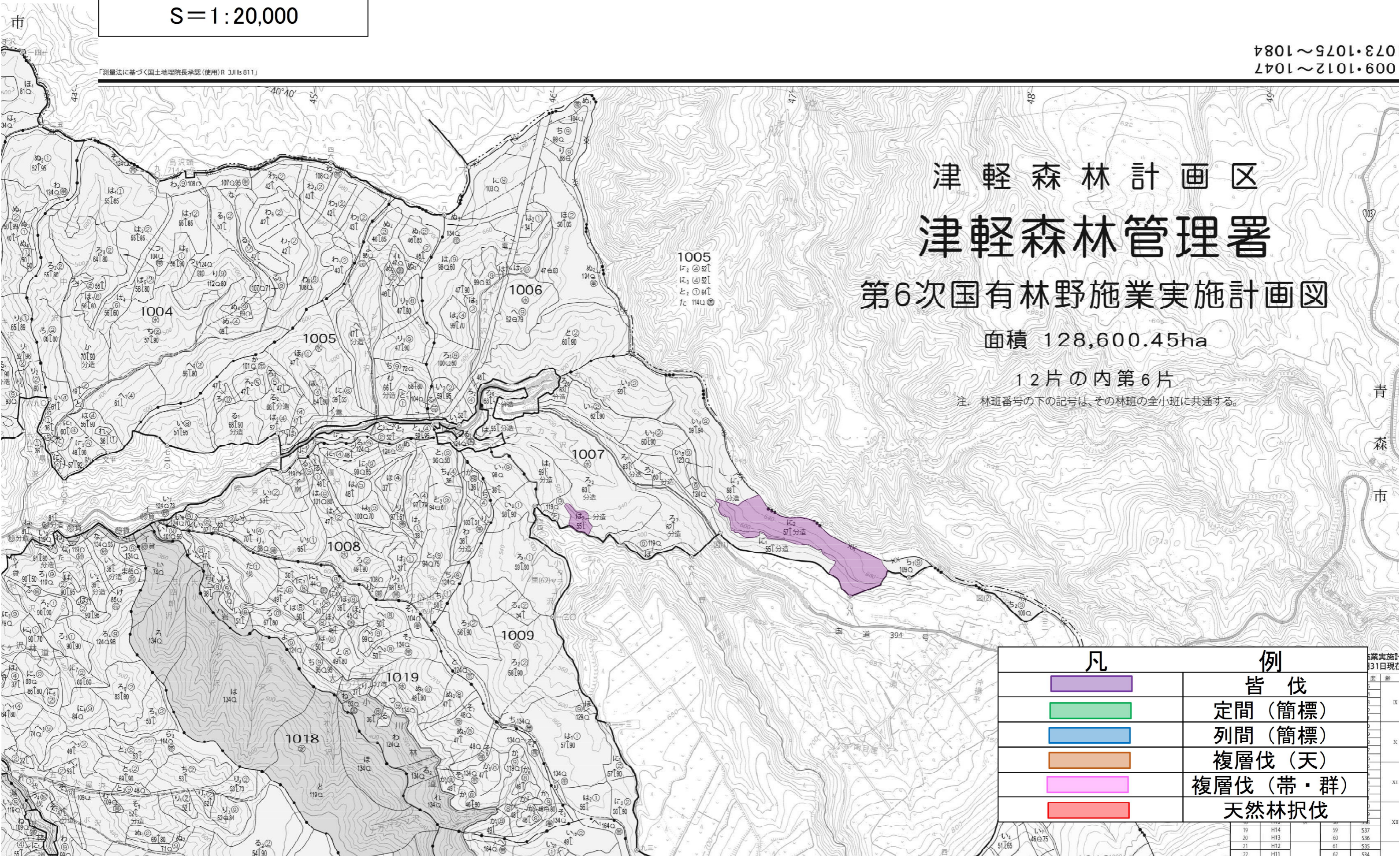


調査箇所 位置図

S=1:20,000

「測量法に基づく国土地理院長承認(使用)R 3J1ts 811」

009・1012～1047
073・1075～1084









津軽森林計画区 津軽森林管理署 第6次国有林野施業実施計画図

面積 128,600.45ha

12片の内第6片

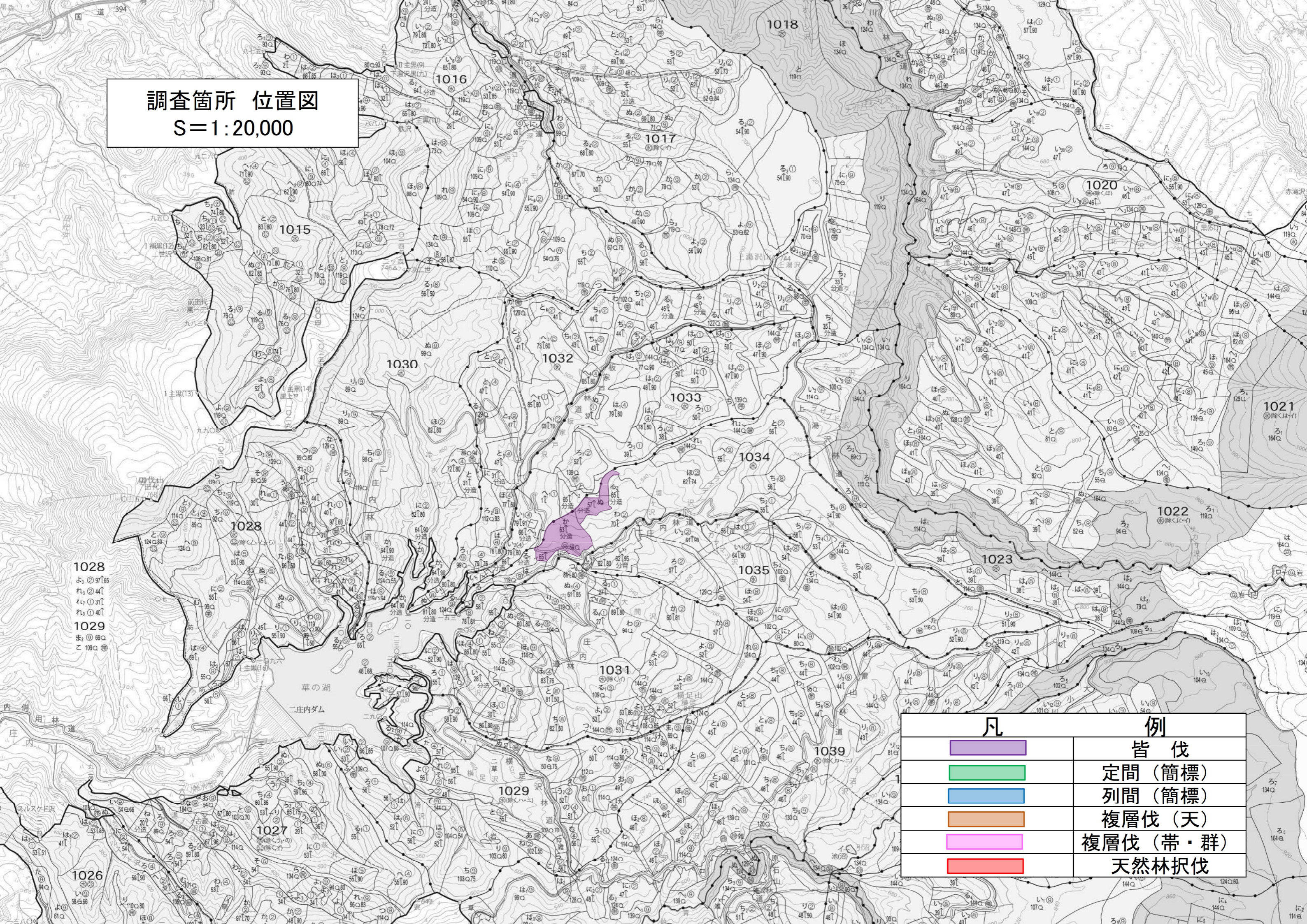
注. 林班番号の下の記号は、その林班の全小班に共通する。

凡	例
	皆伐
	定間(簡標)
	列間(簡標)
	複層伐(天)
	複層伐(帯・群)
	天然林択伐

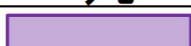
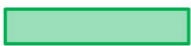




19	H14	59	S37
20	H13	60	S36
21	H12	61	S35
22	H11	62	S34

調査箇所 位置図

S=1:20,000

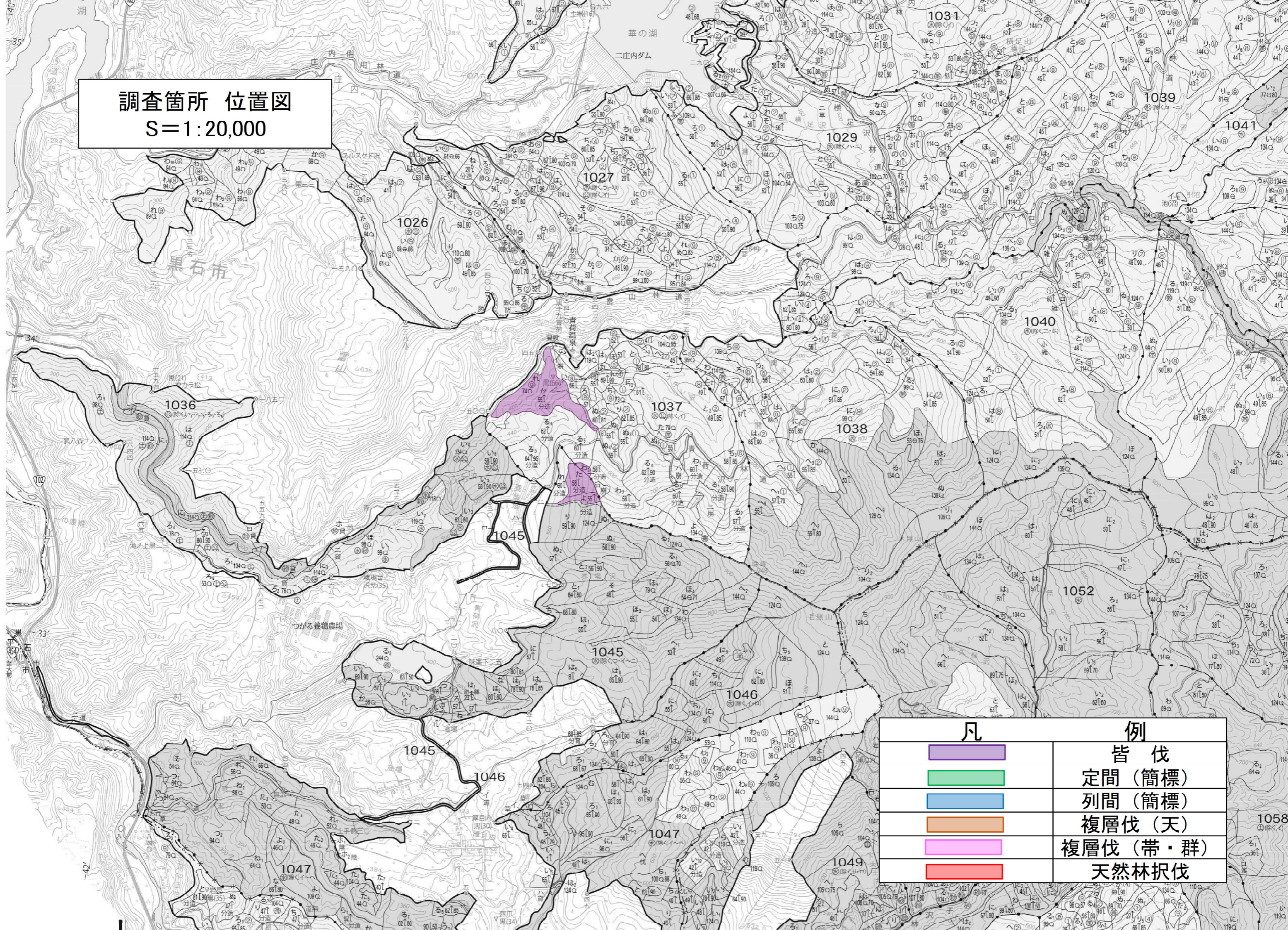








1028
よ②97[65
れ②44[
れ①31[
れ①40[
1029
ま②69Q
こ①09Q

凡	例
	皆伐
	定間 (簡標)
	列間 (簡標)
	複層伐 (天)
	複層伐 (帯・群)
	天然林択伐

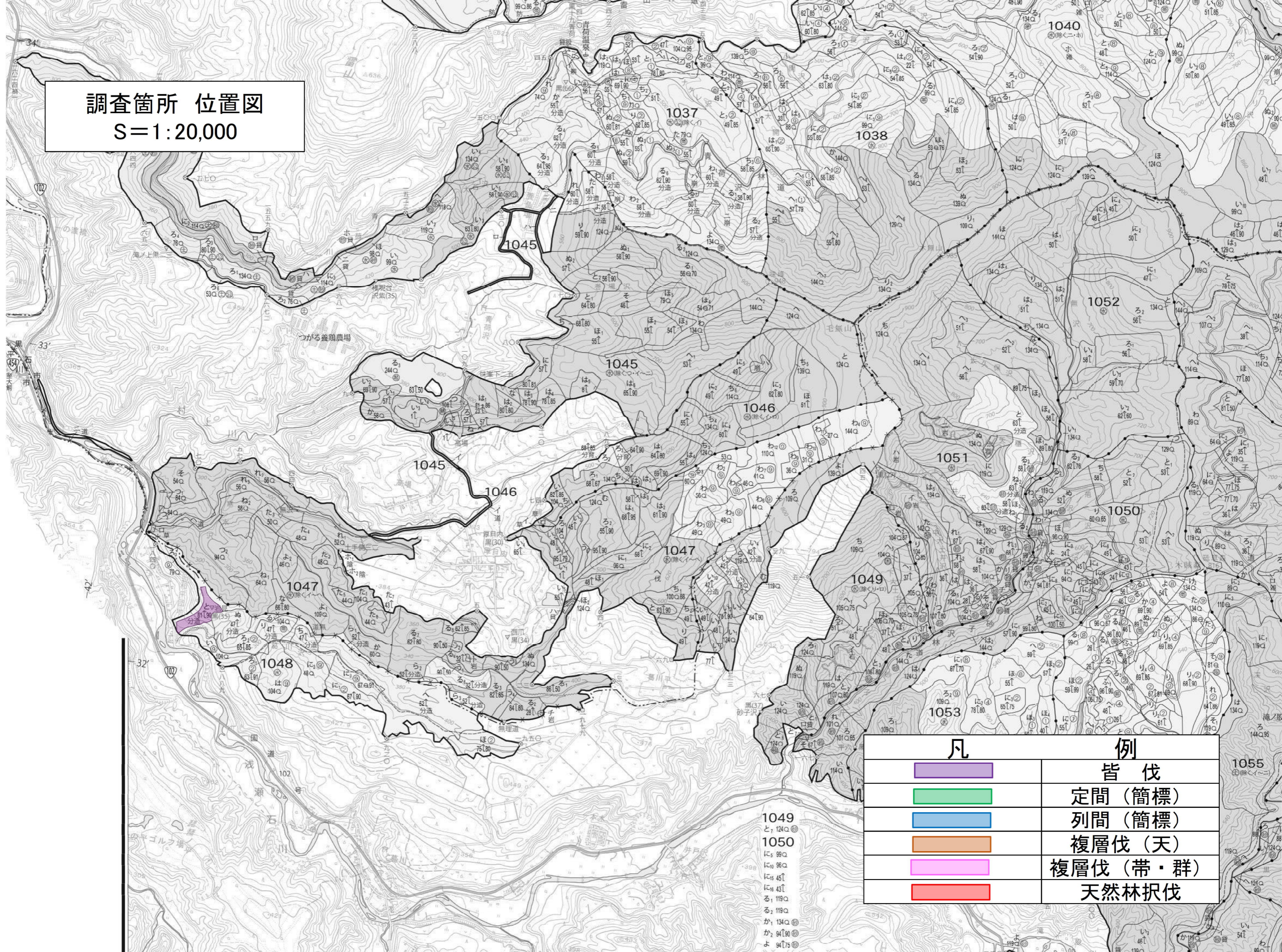
調査箇所 位置図







S=1:20,000



凡	例
	皆伐
	定間 (簡標)
	列間 (簡標)
	複層伐 (天)
	複層伐 (帯・群)
	天然林択伐

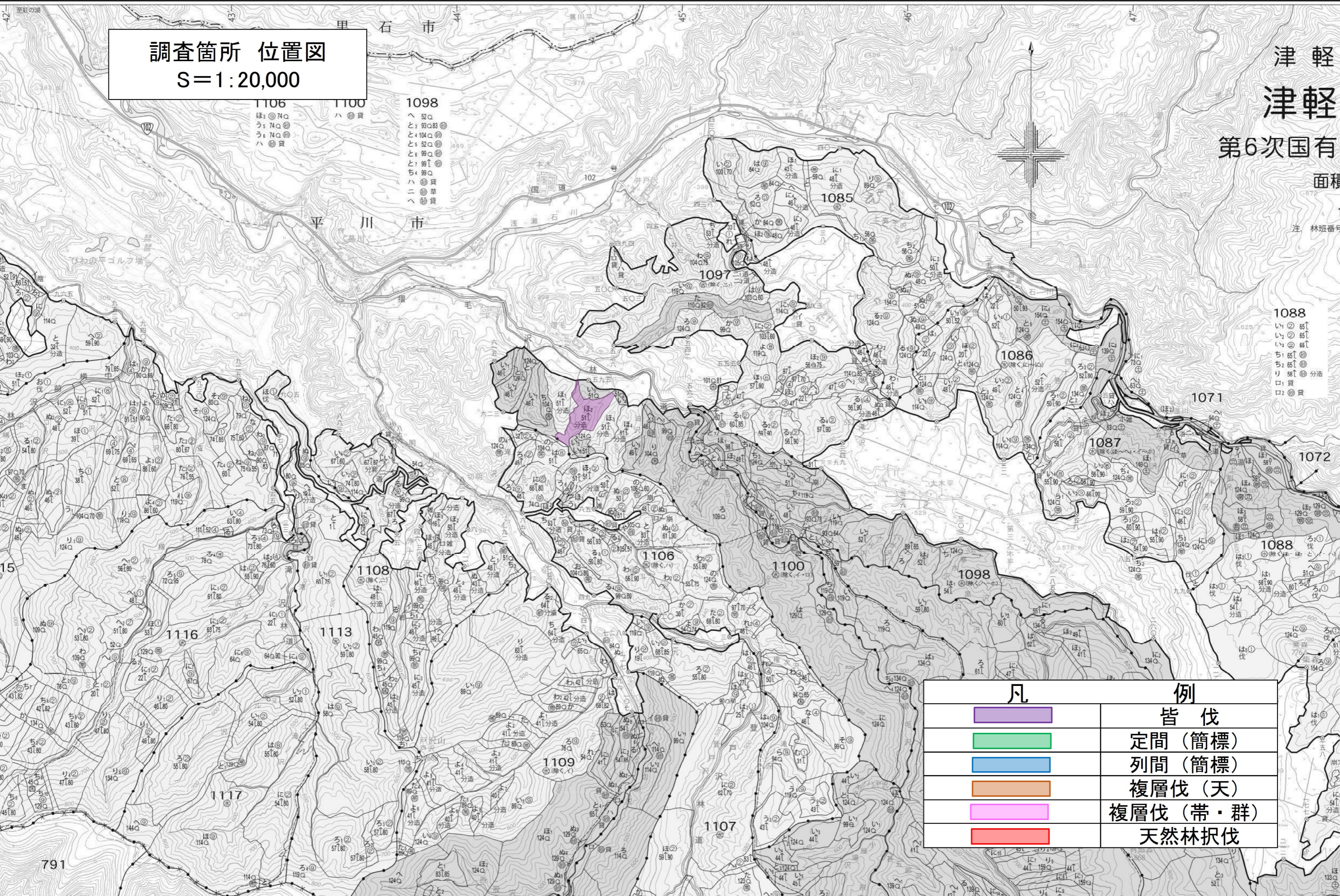
調査箇所 位置図
S=1:20,000



凡	例
	皆伐
	定間 (簡標)
	列間 (簡標)
	複層伐 (天)
	複層伐 (帯・群)
	天然林択伐

調査箇所 位置図
S=1:20,000

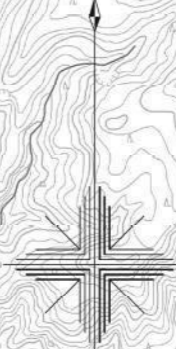
津軽
津軽
第6次国有
面積









1106
ほ₁ 74Q
う₁ 74Q
う₂ 74Q
ハ 貨

1100
ハ 貨

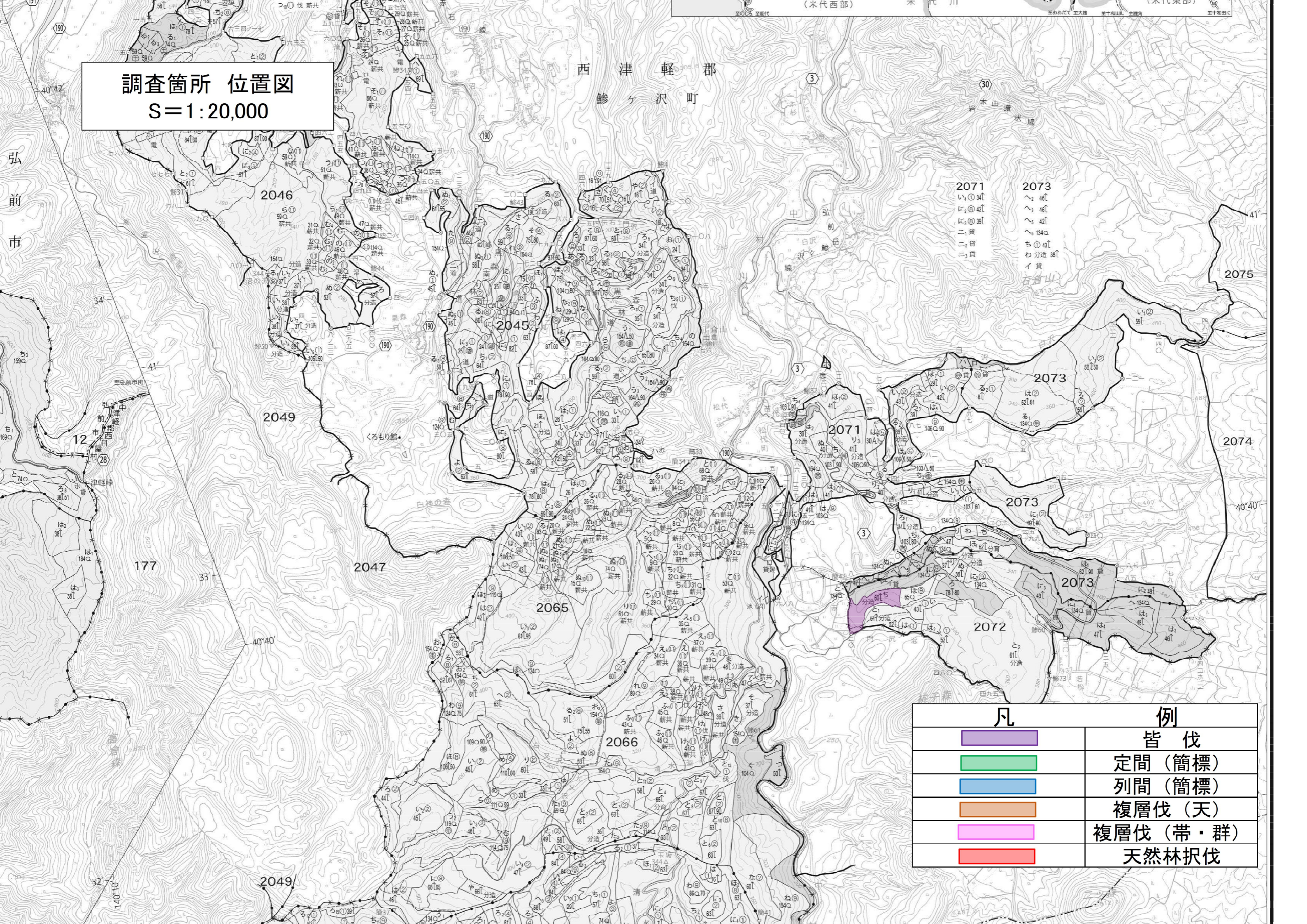
1098
へ 52Q
と₁ 83Q83
と₂ 104Q
と₃ 52Q
と₄ 99Q
ち₁ 99Q
ハニ 貨
へ 貨



凡	例
	皆伐
	定間 (簡標)
	列間 (簡標)
	複層伐 (天)
	複層伐 (帯・群)
	天然林択伐







791

調査箇所 位置図
S=1:20,000



2071
い₁①34
い₂②42
い₃③39
二₁④
二₂⑤
二₃⑥

2073
へ₂④6
へ₃⑤4
へ₄⑥13
ち₁⑦4
わ₁⑧3
イ⑨
古倉山

凡	例
	皆伐
	定間 (簡標)
	列間 (簡標)
	複層伐 (天)
	複層伐 (帯・群)
	天然林択伐