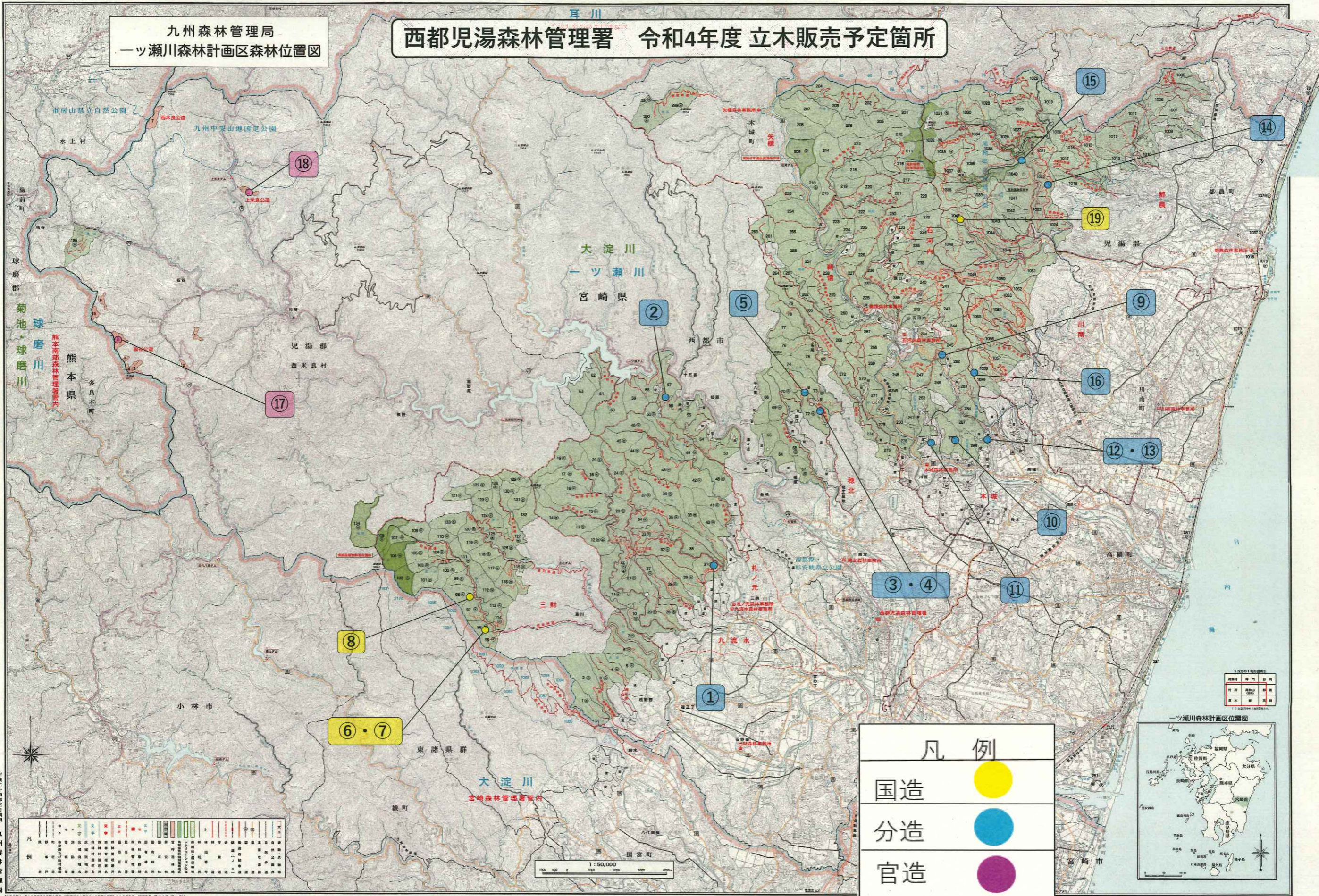


九州森林管理局  
一ツ瀬川森林計画区森林位置図

西都児湯森林管理署 令和4年度 立木販売予定箇所



凡例

国造	● (Yellow)
分造	● (Blue)
官造	● (Purple)



九州森林管理局

凡	● (Yellow)	● (Blue)	● (Purple)	● (Red)	● (Green)	● (Light Green)	● (Light Blue)	● (Light Purple)	● (Light Yellow)	● (Light Orange)	● (Light Pink)	● (Light Cyan)	● (Light Magenta)	● (Light Brown)	● (Light Grey)	● (Light Blue-Grey)	● (Light Green-Grey)	● (Light Yellow-Grey)	● (Light Orange-Grey)	● (Light Pink-Grey)	● (Light Cyan-Grey)	● (Light Magenta-Grey)	● (Light Brown-Grey)	● (Light Grey-Grey)	● (Light Blue-Grey-Grey)	● (Light Green-Grey-Grey)	● (Light Yellow-Grey-Grey)	● (Light Orange-Grey-Grey)	● (Light Pink-Grey-Grey)	● (Light Cyan-Grey-Grey)	● (Light Magenta-Grey-Grey)	● (Light Brown-Grey-Grey)	● (Light Grey-Grey-Grey)
例	● (Yellow)	● (Blue)	● (Purple)	● (Red)	● (Green)	● (Light Green)	● (Light Blue)	● (Light Purple)	● (Light Yellow)	● (Light Orange)	● (Light Pink)	● (Light Cyan)	● (Light Magenta)	● (Light Brown)	● (Light Grey)	● (Light Blue-Grey)	● (Light Green-Grey)	● (Light Yellow-Grey)	● (Light Orange-Grey)	● (Light Pink-Grey)	● (Light Cyan-Grey)	● (Light Magenta-Grey)	● (Light Brown-Grey)	● (Light Grey-Grey)	● (Light Blue-Grey-Grey)	● (Light Green-Grey-Grey)	● (Light Yellow-Grey-Grey)	● (Light Orange-Grey-Grey)	● (Light Pink-Grey-Grey)	● (Light Cyan-Grey-Grey)	● (Light Magenta-Grey-Grey)	● (Light Brown-Grey-Grey)	● (Light Grey-Grey-Grey)

1:50,000