

令和 7 年度

事業名	新発田地区造林（下刈）請負事業（R 7 ゼロ国）
事業場所	新潟県胎内市下荒沢字胎内山国有林 25 ろ林小班外
事業量	下刈 11.20ha

下越森林管理署

図 面 目 録

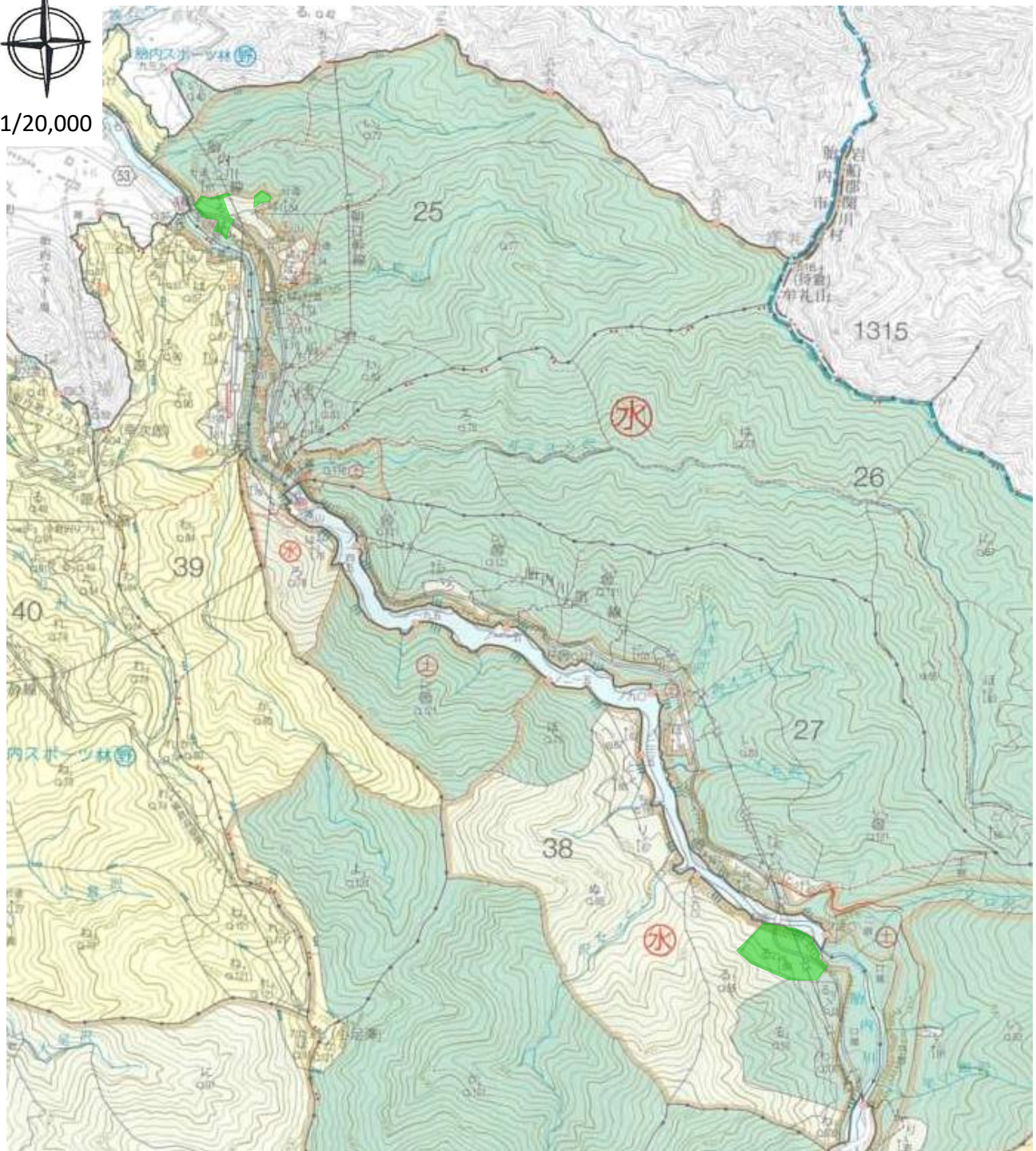
	図 面 名	枚 数
	請負契約箇所位置図（A4）1/20,000	6
	請負契約箇所位置図（A3）1/5,000	8

（表紙含む 15 枚）

位 置 図
新発田地区造林(下刈)請負事業(R7ゼロ国)
新潟県胎内市下荒沢字胎内山国有林25ろ林小班外



1/20,000

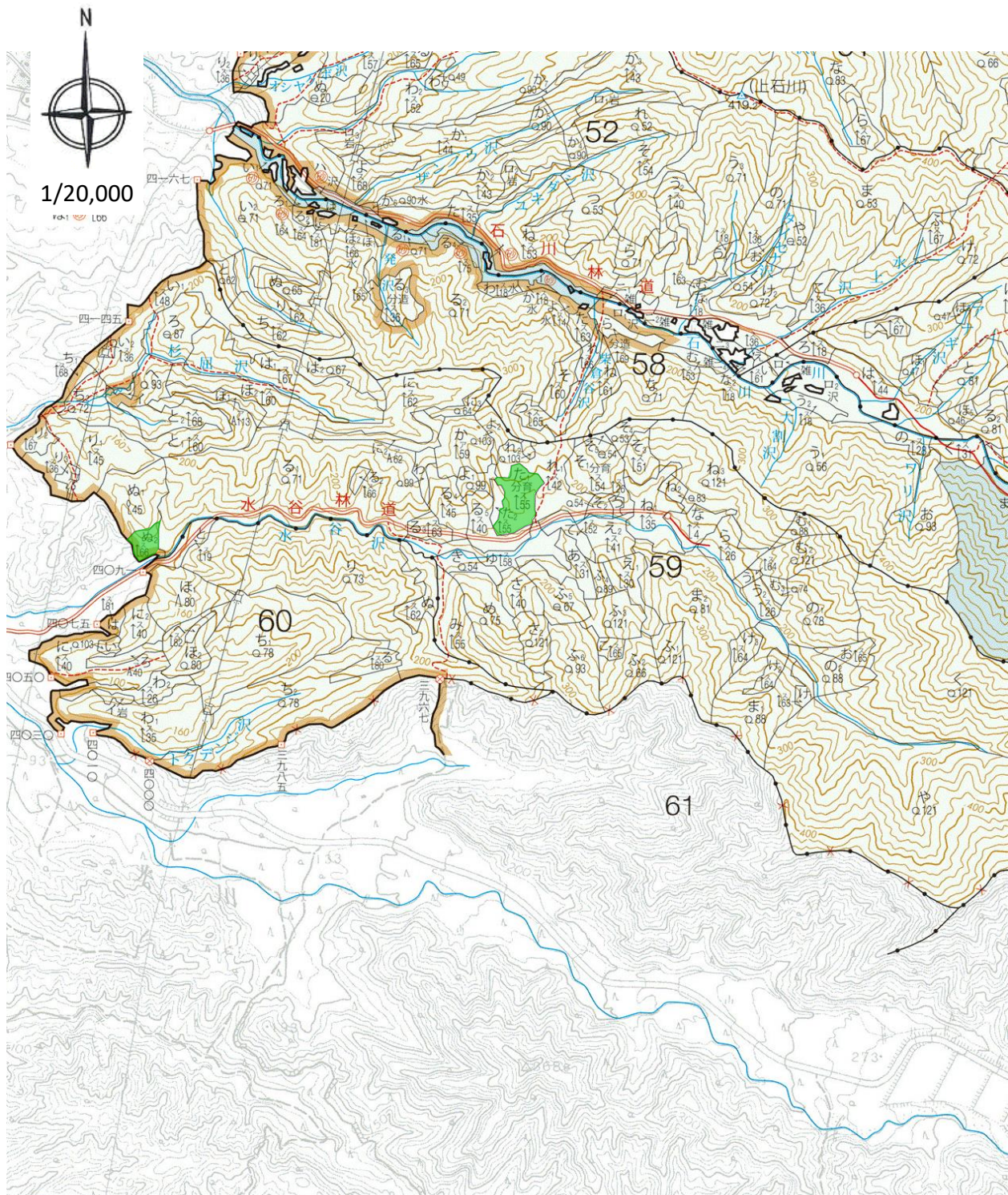


(担当区:中条)

林小班	作業種	契約面積(ha)
25ろ	下刈	1.11
38ろ4	下刈	1.45
計		2.56

凡	例
契約箇所	

位 置 図
新発田地区造林(下刈)請負事業(R7ゼロ国)
新潟県胎内市下荒沢字胎内山国有林25ろ林小班外

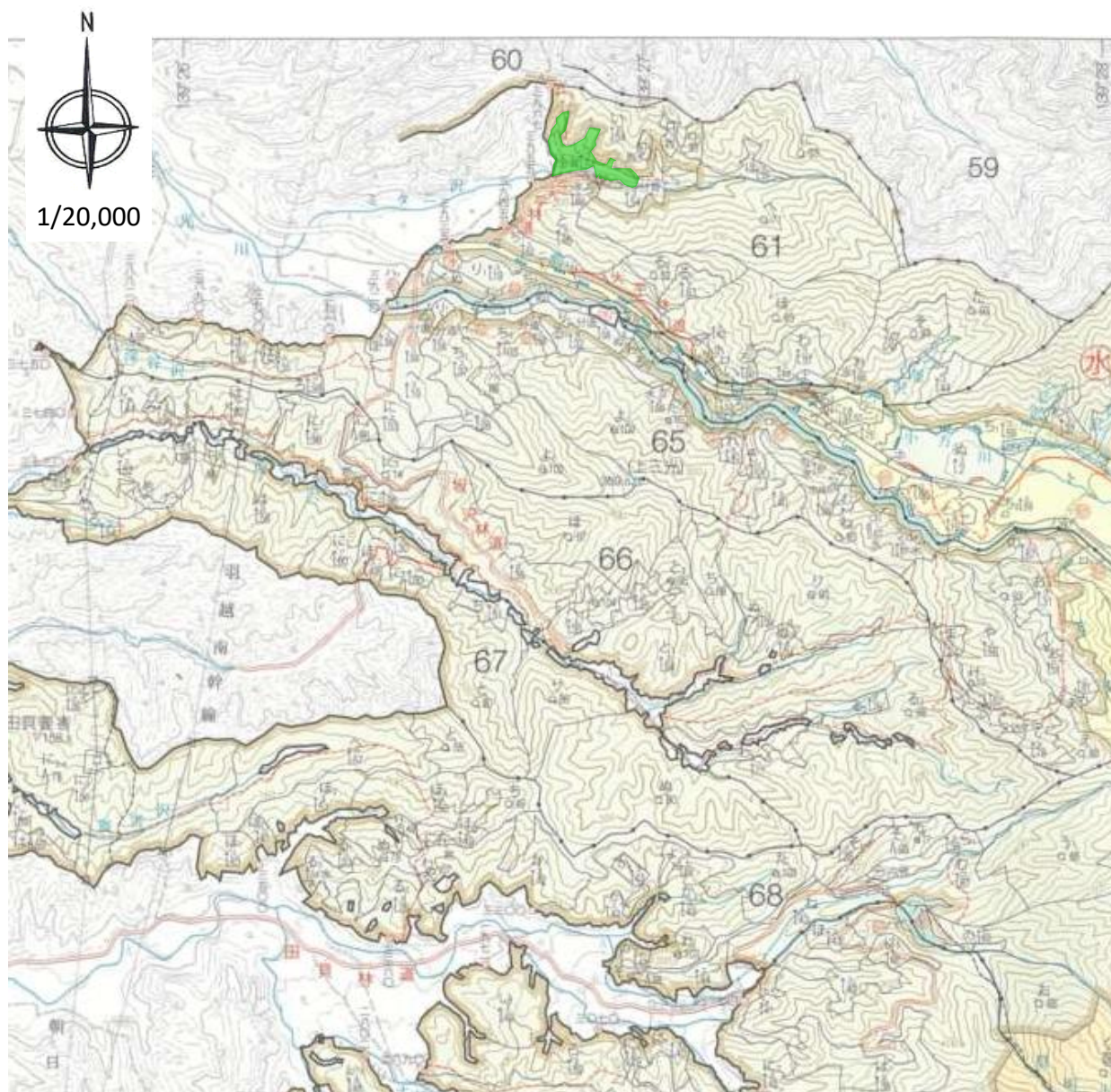


(担当区:黒川)

林小班	作業種	契約面積(ha)
59ぬ2	下刈	0.77
59た1	下刈	2.30
計		3.07

凡	例
契約箇所	

位 置 図
新発田地区造林(下刈)請負事業(R7ゼロ国)
新潟県胎内市下荒沢字胎内山国有林25㍻林小班外



(担当区:川東)

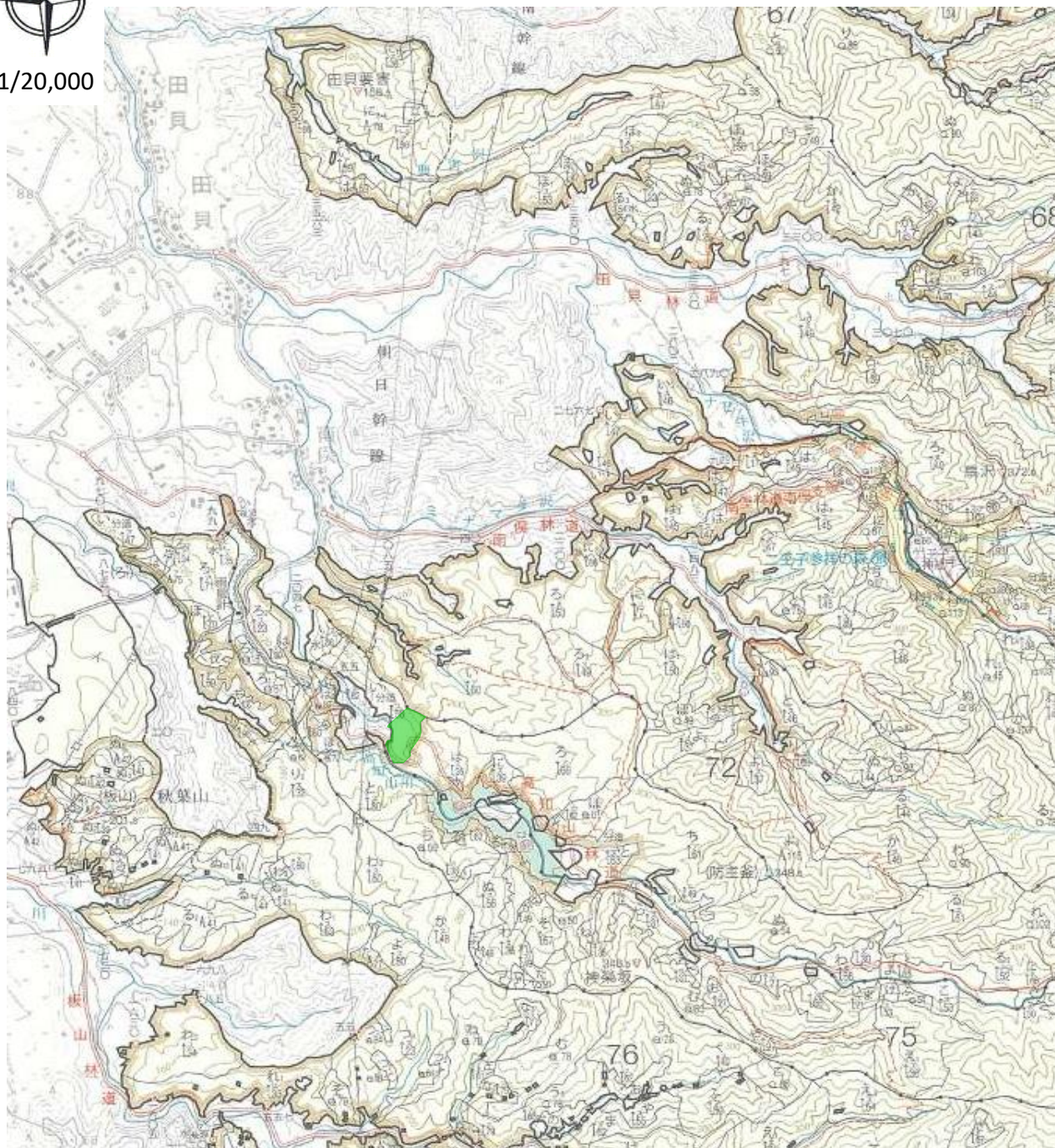
林小班	作業種	契約面積(ha)
61い2	下刈	2.23
計		2.23

凡	例
契約箇所	

位 置 図
新発田地区造林(下刈)請負事業(R7ゼロ国)
新潟県胎内市下荒沢字胎内山国有林25ろ林小班外



1/20,000

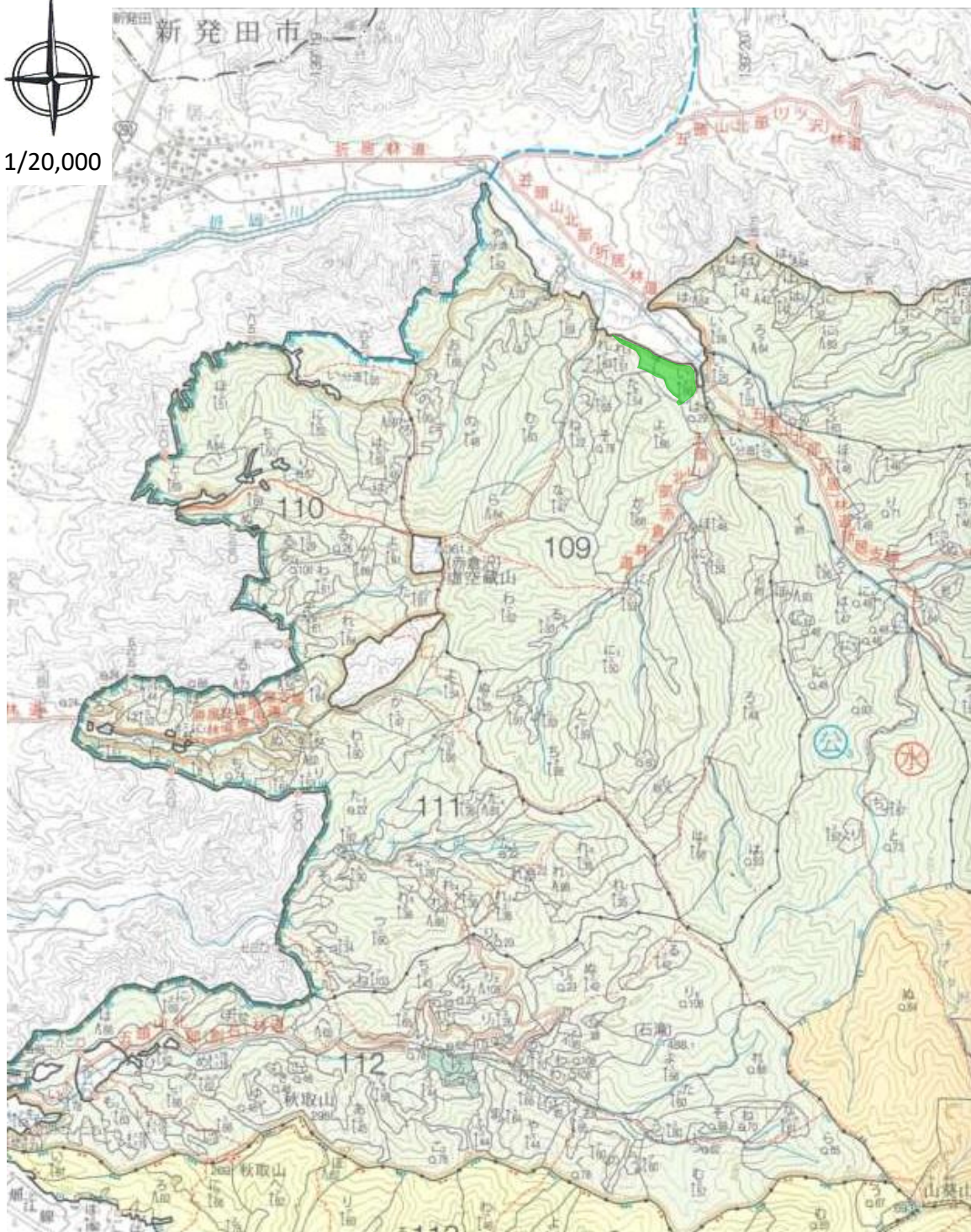


(担当区:川東)

林小班	作業種	契約面積(ha)
73い1	下刈	1.13
計		1.13

凡	例
契約箇所	

位 置 図
新発田地区造林(下刈)請負事業(R7ゼロ国)
新潟県胎内市下荒沢字胎内山国有林25ろ林小班外



(担当区: 村杉)

林小班	作業種	契約面積(ha)
109い	下刈	1.67
計		1.67

凡	例
契約箇所	

位 置 図
新発田地区造林(下刈)請負事業(R7ゼロ国)
新潟県胎内市下荒沢字胎内山国有林25ろ林小班外

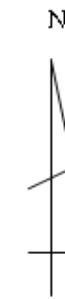


(担当区:村杉)

林小班	作業種	契約面積(ha)
112い1	下刈	0.54
計		0.54

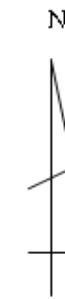
凡	例
契約箇所	

A topographic map showing a mountainous region with contour lines. A river flows from the top left towards the bottom right. A red line highlights a path along the riverbank. A green area highlights a specific region on the right side of the river. The map includes labels for '三民路' (Sanmin Road) and '三民' (Sanmin).

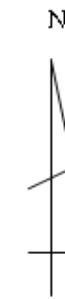
[illegible]

A topographic map of a mountainous region. The map features numerous contour lines indicating elevation, with labels such as 250, 300, 330, 360, 400, and 420. A prominent red line runs diagonally across the upper right portion of the map. Several green-shaded areas are scattered throughout the central and right portions of the map. A blue line, possibly representing a river or a path, runs vertically along the right edge of the map. Various symbols are present, including circles with the character '水' (water) and a square symbol. The map is overlaid with a grid of thin lines.

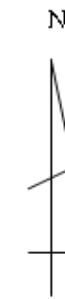
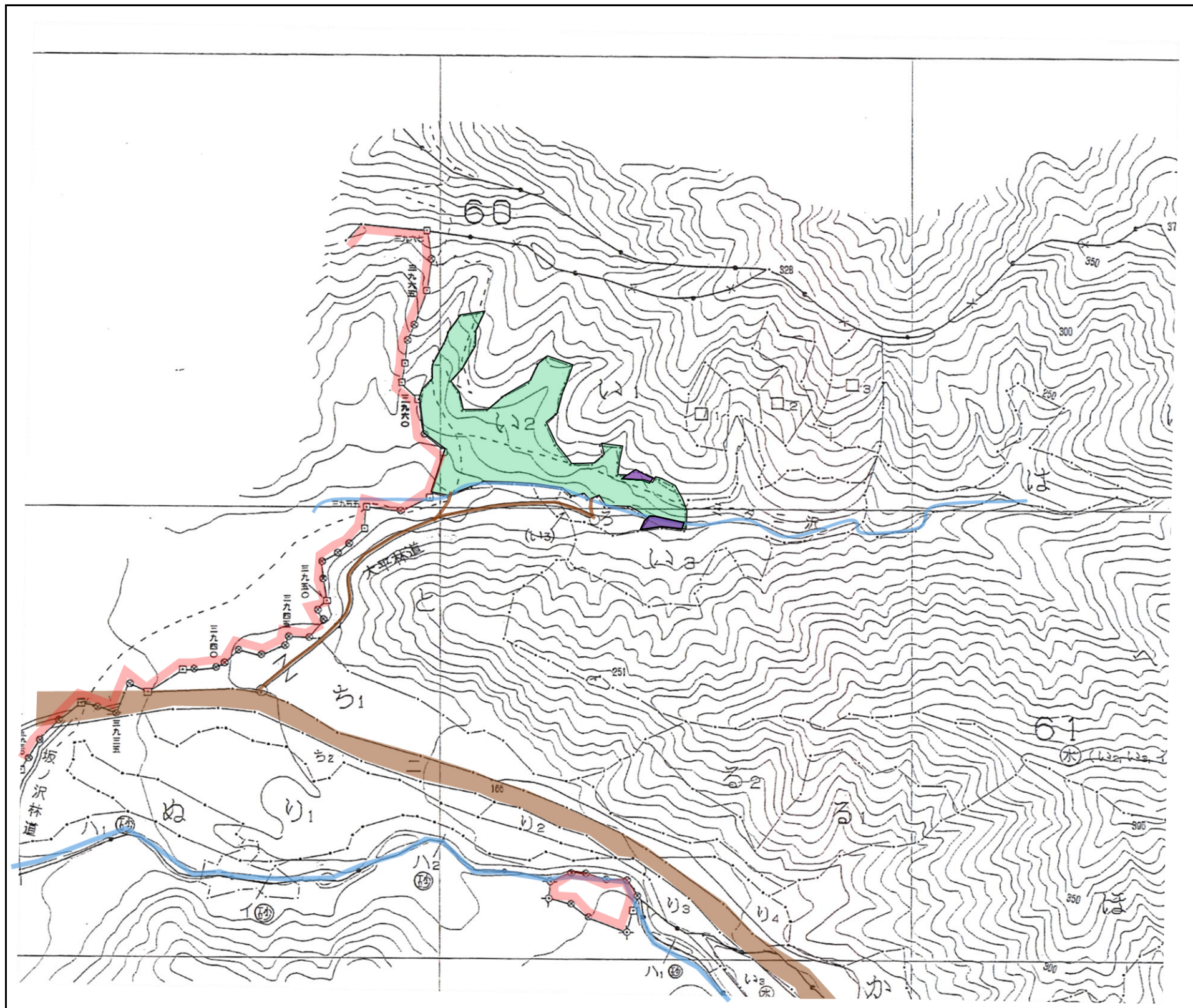
[illegible]

[illegible][illegible]

A topographic map of the Mt. Kiyomasa area. The map features contour lines indicating elevation. A prominent orange line, likely a road or railway, runs diagonally across the map. A green-shaded area is located in the upper left quadrant, containing several purple rectangular markers. A red line with circular markers follows a path through the terrain. Various place names and elevation points are labeled in Japanese, including '水谷林道' (Mizutani Rindō), '水谷沢' (Mizutani Zawa), and '三光堂' (Mitsudō) with an elevation of 265.5. The map also shows a grid system and other geographical features like a river or stream in the lower right.

[illegible]

造林事業請負箇所位置図（下刈）



縮尺 1 : 5, 000

[illegible]

This is a topographic map of a mountainous region. The map features contour lines indicating elevation, with labels such as 150, 143, 150, 200, and 254. A prominent green-shaded area is located in the center-right, representing a specific land parcel or forest. A blue line, likely a river or stream, flows through the lower-left portion of the map. A yellow line, possibly a road or path, winds through the lower-right. The text '高知山林道' (Kochi Forest Road) is written vertically in the lower-right. The characters 'ろに' (Roni) are visible in the bottom right. A large number '72' is positioned in the upper right, and '73' is in the lower right. A small number '254' is in the bottom right corner. The map also shows various other features like small squares, circles, and dashed lines, which could represent buildings, wells, or other landmarks.



縮尺 1 : 5, 000







[illegible]

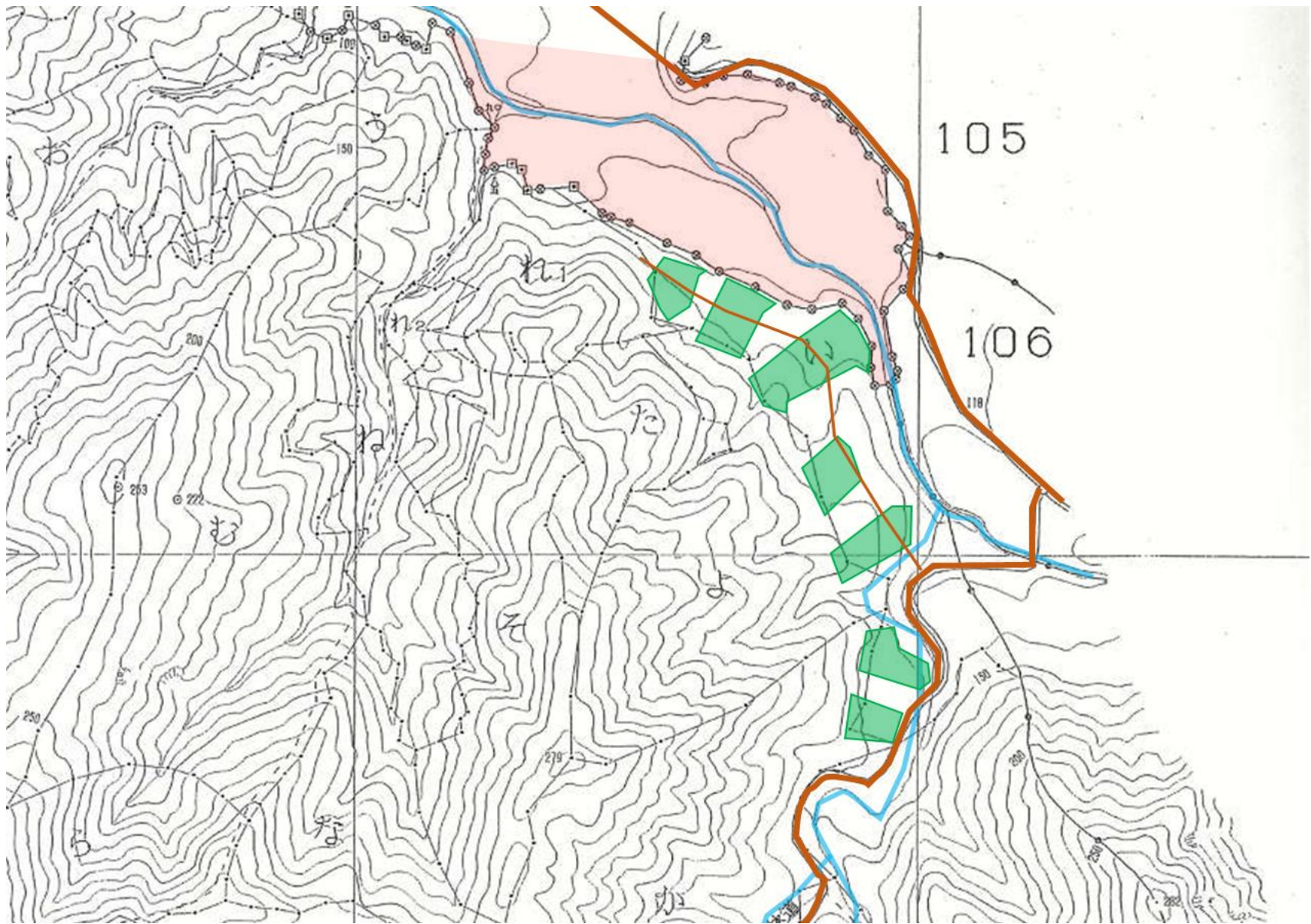
造林事業請負箇所位置図（下刈）

N

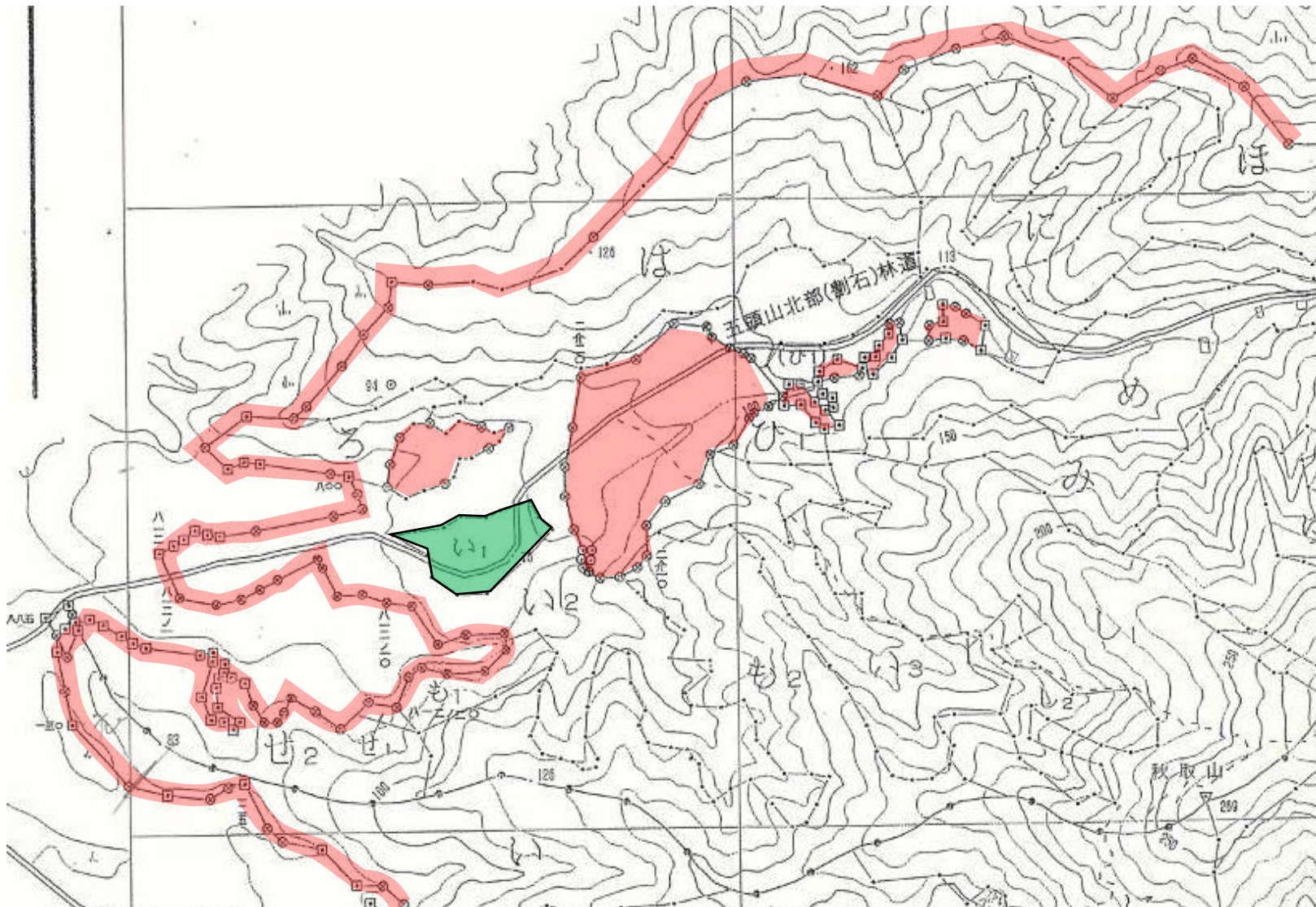


縮尺 1 : 5, 000

森 林 事 務 所 名			村杉事務所							
作業種			下刈							
凡 例										
契約箇所										
除地										
道路等										
沢										
林班界、小班界										
民有地										
契約（実査）箇所面積										
林 小 班	樹 種	数 量	区 域 面 積		標 準 地 面 積		契 約 外 面 積		契 約 面 積	
109 い	スギ			ha 1 67		ha		ha		ha 1 67



造林事業請負箇所位置図（下刈）



縮尺 1 : 5, 000

[illegible]