

令和 7 年度

事業名	新発田地区造林（下刈）請負事業（R 7 ゼロ国）
事業場所	新潟県胎内市下荒沢字胎内山国有林 25 ろ林小班外
事業量	下刈 11.20ha

下越森林管理署

図 面 目 録

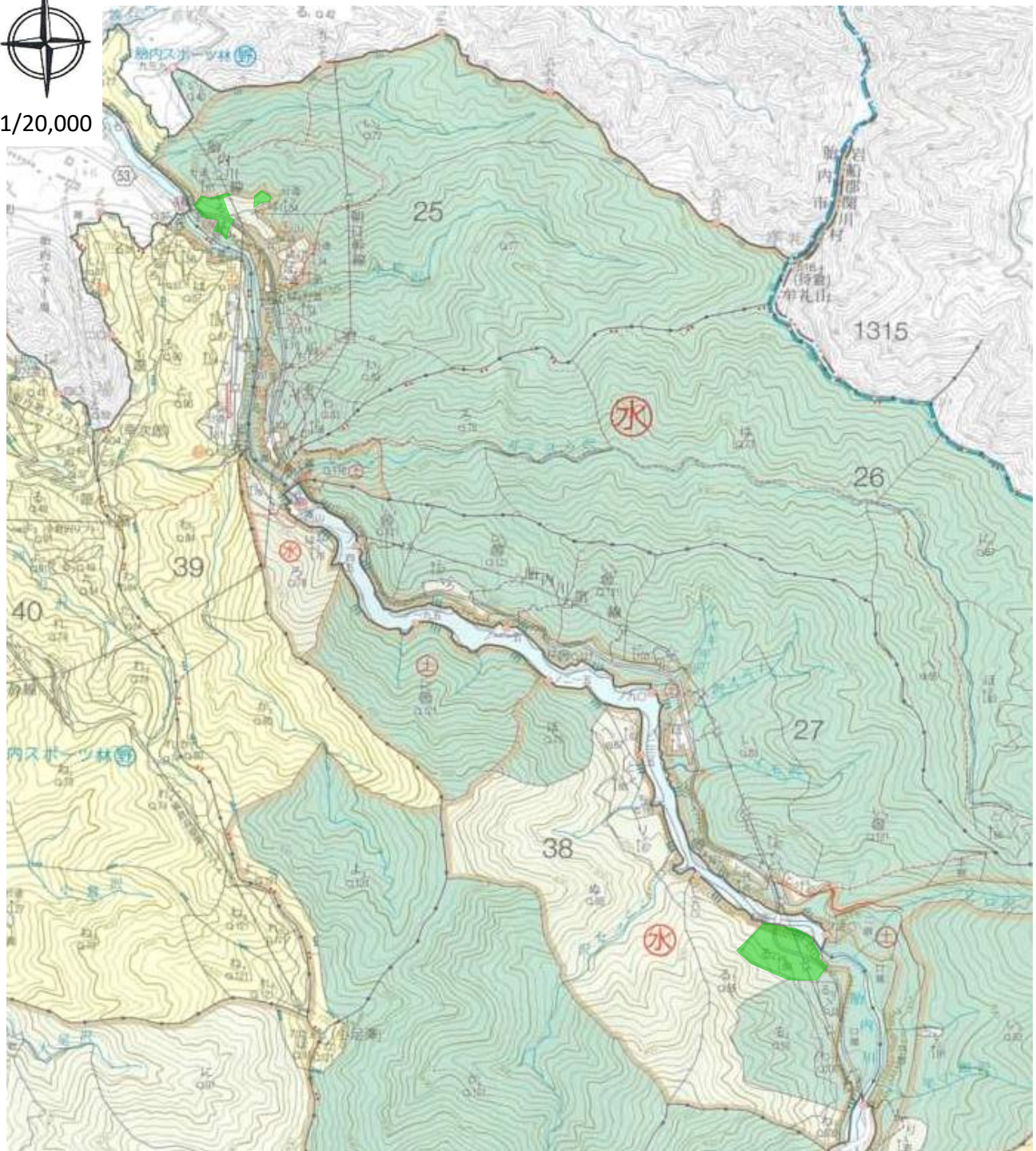
	図 面 名	枚 数
	請負契約箇所位置図（A4）1/20,000	6
	請負契約箇所位置図（A3）1/5,000	8

（表紙含む 15 枚）

位 置 図
新発田地区造林(下刈)請負事業(R7ゼロ国)
新潟県胎内市下荒沢字胎内山国有林25ろ林小班外



1/20,000

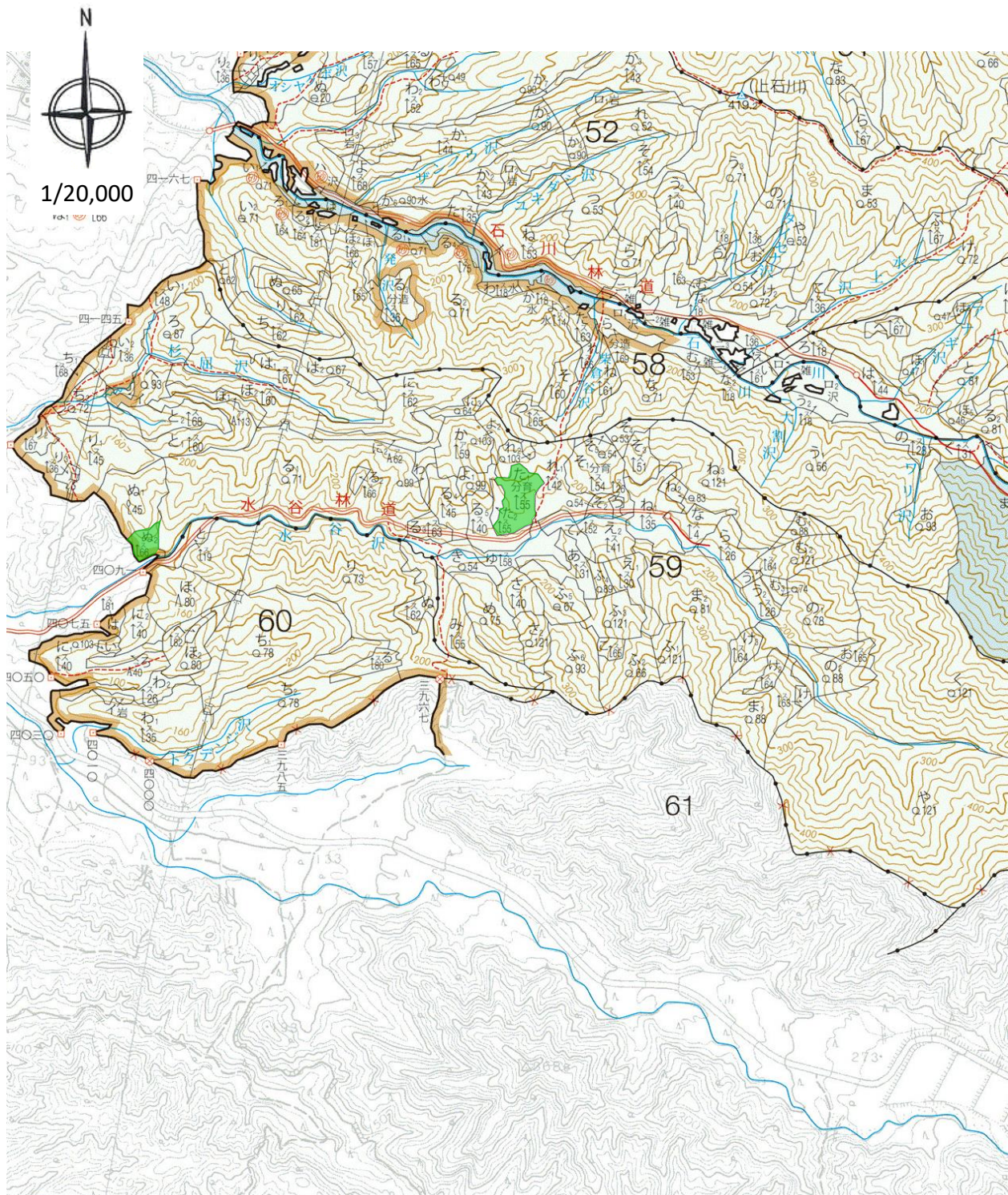


(担当区:中条)

林小班	作業種	契約面積(ha)
25ろ	下刈	1.11
38ろ4	下刈	1.45
計		2.56

凡	例
契約箇所	

位 置 図
新発田地区造林(下刈)請負事業(R7ゼロ国)
新潟県胎内市下荒沢字胎内山国有林25ろ林小班外

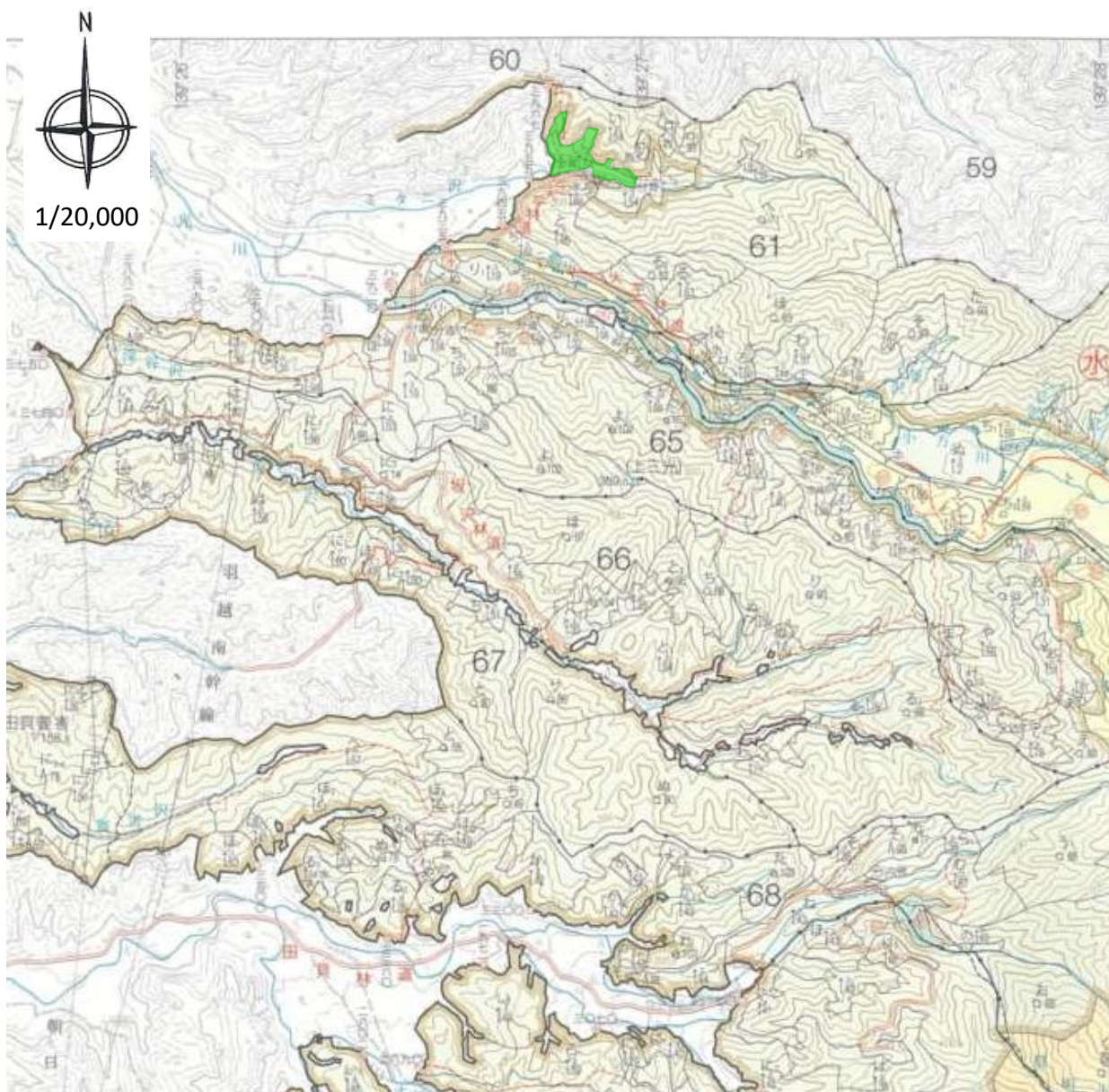


(担当区:黒川)

林小班	作業種	契約面積(ha)
59ぬ2	下刈	0.77
59た1	下刈	2.30
計		3.07

凡	例
契約箇所	

位 置 図
新発田地区造林(下刈)請負事業(R7ゼロ国)
新潟県胎内市下荒沢字胎内山国有林25ろ林小班外



(担当区:川東)

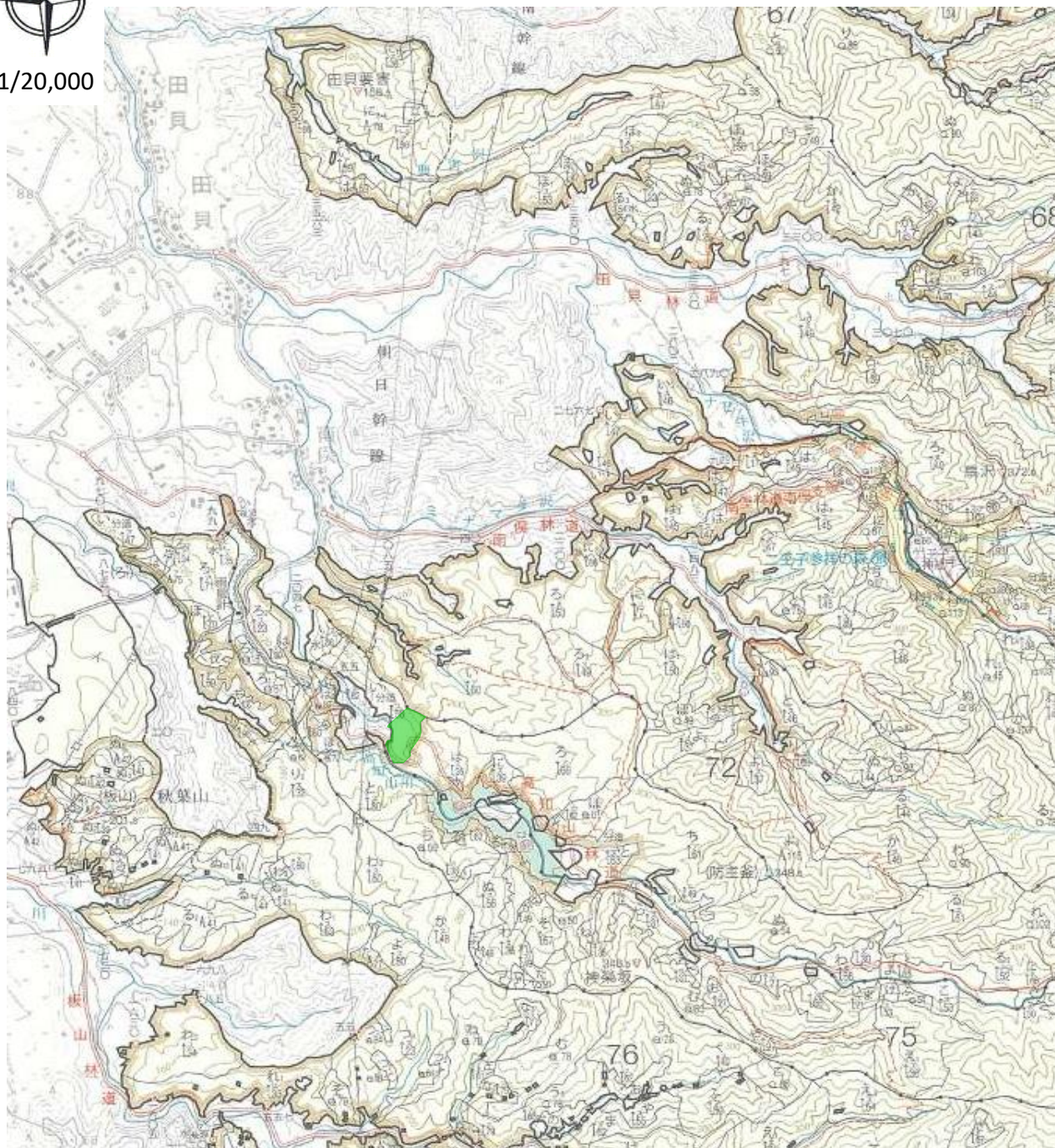
林小班	作業種	契約面積(ha)
61い2	下刈	2.23
計		2.23

凡	例
契約箇所	

位 置 図
新発田地区造林(下刈)請負事業(R7ゼロ国)
新潟県胎内市下荒沢字胎内山国有林25ろ林小班外



1/20,000

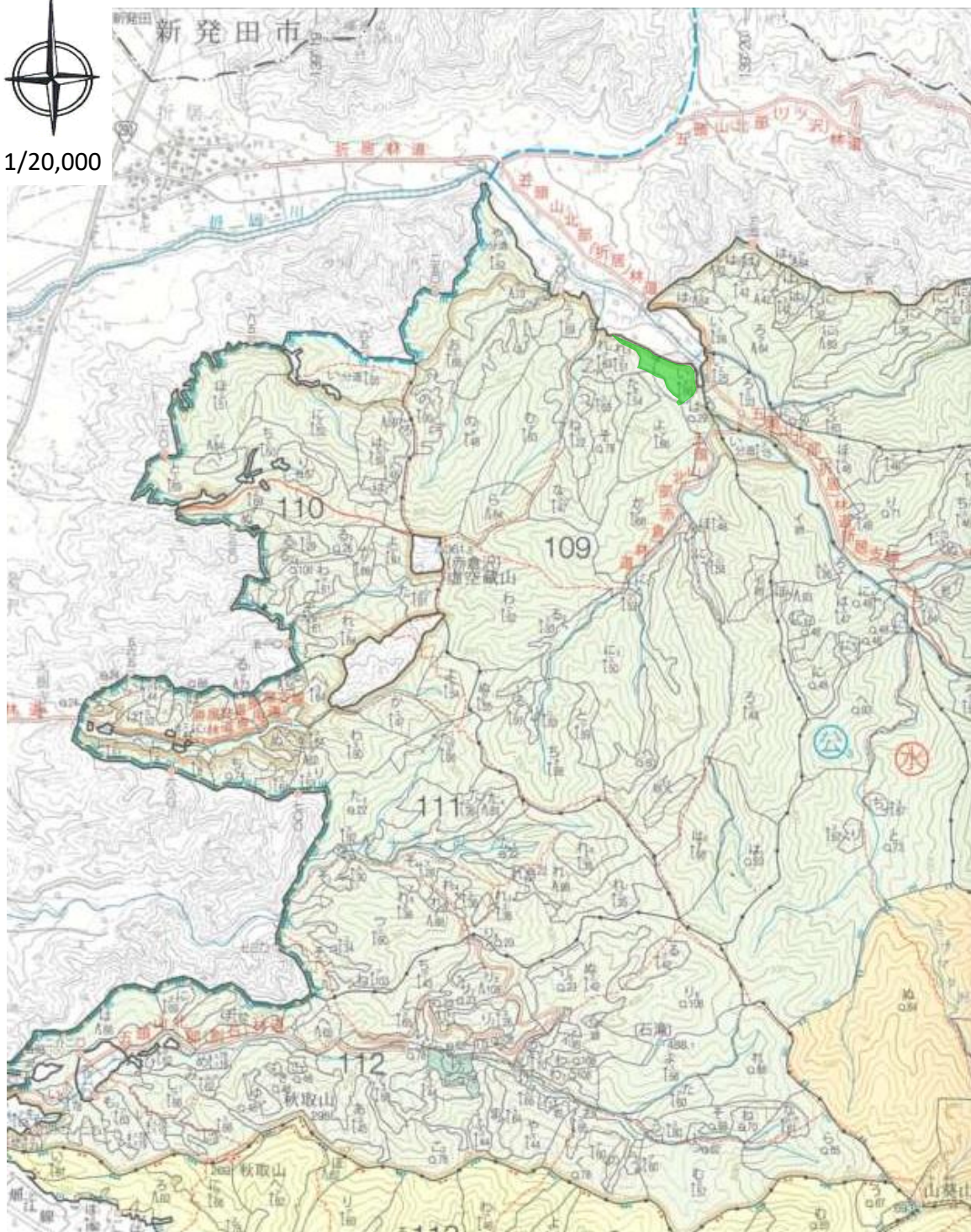


(担当区:川東)

林小班	作業種	契約面積(ha)
73い1	下刈	1.13
計		1.13

凡	例
契約箇所	

位 置 図
新発田地区造林(下刈)請負事業(R7ゼロ国)
新潟県胎内市下荒沢字胎内山国有林25ろ林小班外



(担当区:村杉)

林小班	作業種	契約面積(ha)
109い	下刈	1.67
計		1.67

凡	例
契約箇所	

位 置 図
新発田地区造林(下刈)請負事業(R7ゼロ国)
新潟県胎内市下荒沢字胎内山国有林25ろ林小班外

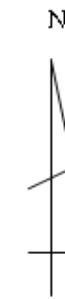


(担当区:村杉)

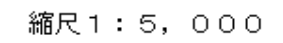
林小班	作業種	契約面積(ha)
112い1	地拵・植付	0.54
計		0.54

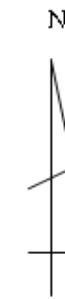
凡	例
契約箇所	

This is a topographic map of a mountainous region. The map features contour lines indicating elevation, with labels such as 250, 290, 300, 310, 320, and 334. A river flows through the lower portion of the map, with the label '三民' (Sanmin) written along its course. A road, labeled '三民路' (Sanmin Road), runs parallel to the river. A red line highlights a path along the riverbank, and a green area highlights a specific region. The map also includes a grid system and various symbols for buildings and other features.

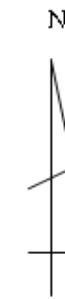
[illegible]

A topographic map of a mountainous region. The map features numerous contour lines indicating elevation, with labels such as 250, 300, 330, 360, 400, and 420. A prominent red line runs diagonally across the upper right portion of the map. Several green-shaded areas are located in the center-right, with purple dashed lines within them. A blue line runs vertically along the right edge of the map. Various symbols are present, including circles with the character '水' (water) and a square symbol. The map is oriented with North at the top.

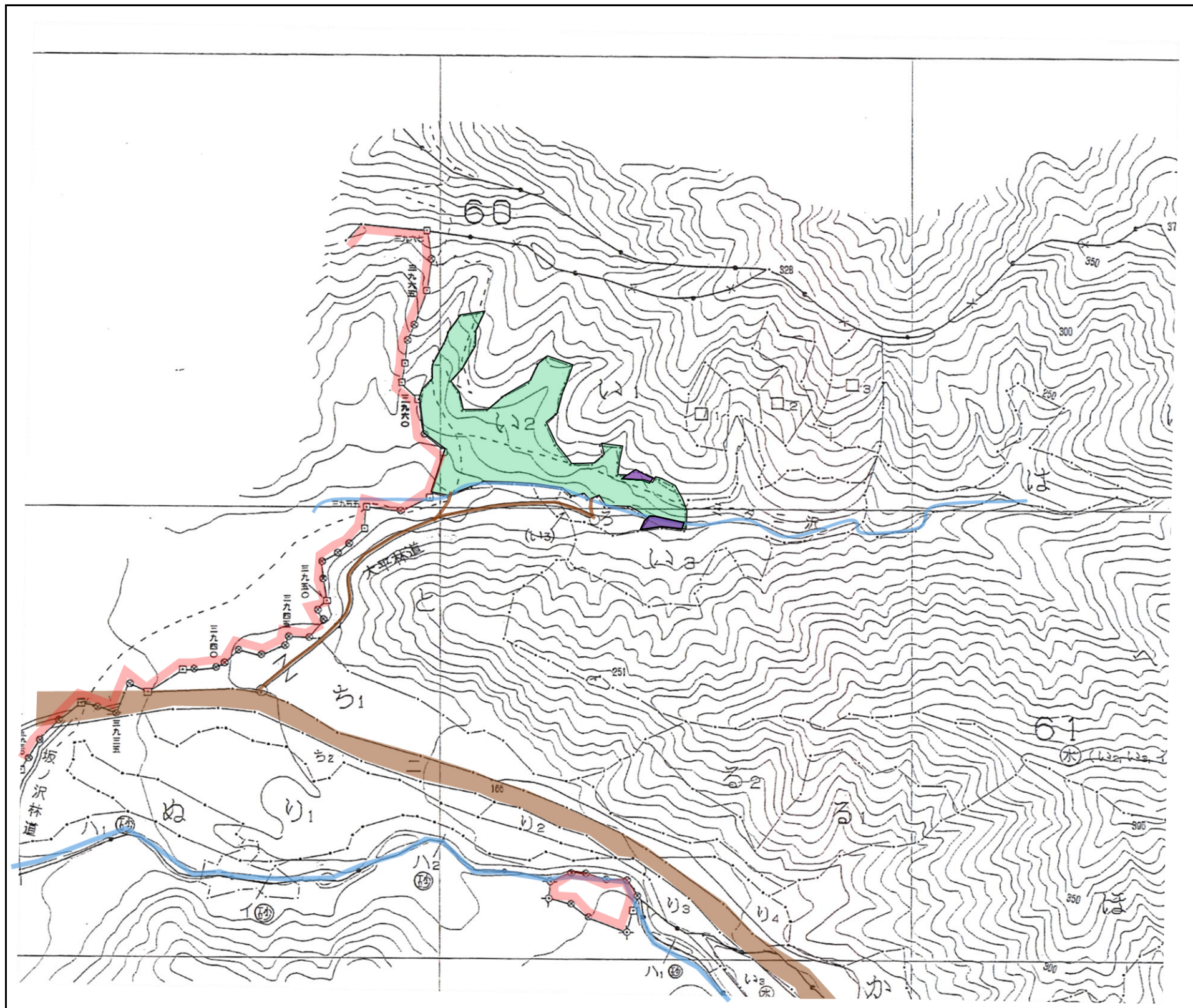
[illegible]

[illegible][illegible]

A topographic map of the Mt. Kiyomasa area. The map features contour lines indicating elevation. A prominent orange line, likely a road or railway, runs diagonally across the map. A green-shaded area is located in the upper left quadrant, containing several purple rectangular markers. A red line with circular markers follows a path through the terrain. Various place names and elevation points are labeled in Japanese, including '水谷林道' (Mizutani Rindō), '水谷沢' (Mizutani Zawa), and '三光堂' (Mitsudō) with an elevation of 265.5. The map also shows a grid system and other geographical features like a river and a lake.

[illegible]

造林事業請負箇所位置図（下刈）



N

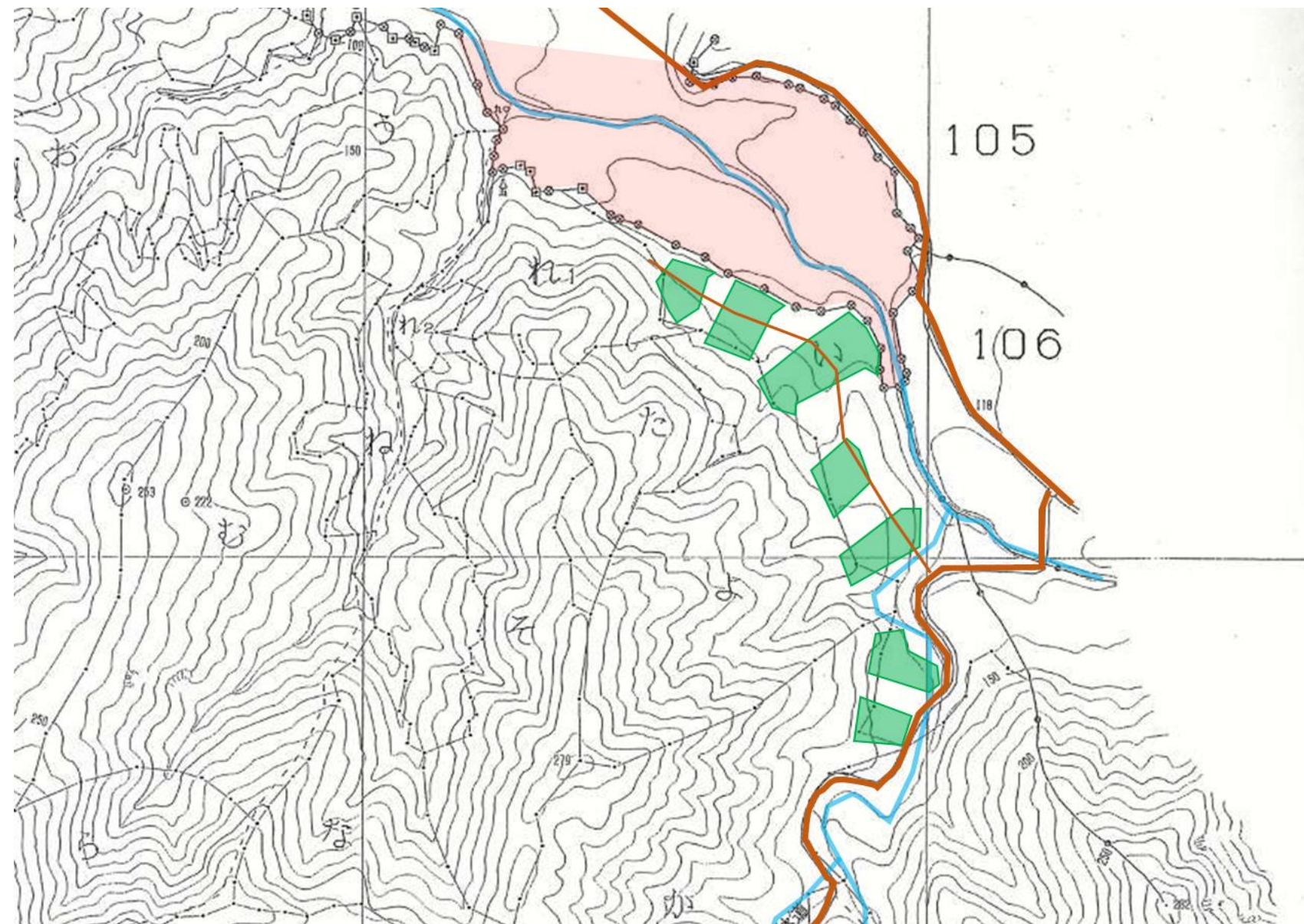
縮尺 1 : 5, 000

[illegible]

This is a topographic map of a mountainous region. The map features contour lines indicating elevation, with labels such as 150, 143, 150, 228, and 200. A prominent green-shaded area is located in the center-right of the map. A yellow line, likely representing a road or trail, winds through the terrain, with a section labeled '高知山林道' (Kochi Sanrin-do). A red line also traces a path through the mountains. In the upper right, the number '72' is printed. In the lower right, the number '73' is printed, followed by the characters 'ろに'. A small number '254' is visible in the bottom right corner. The map is overlaid with a grid of horizontal and vertical lines.

[illegible]

造林事業請負箇所位置図（下刈）

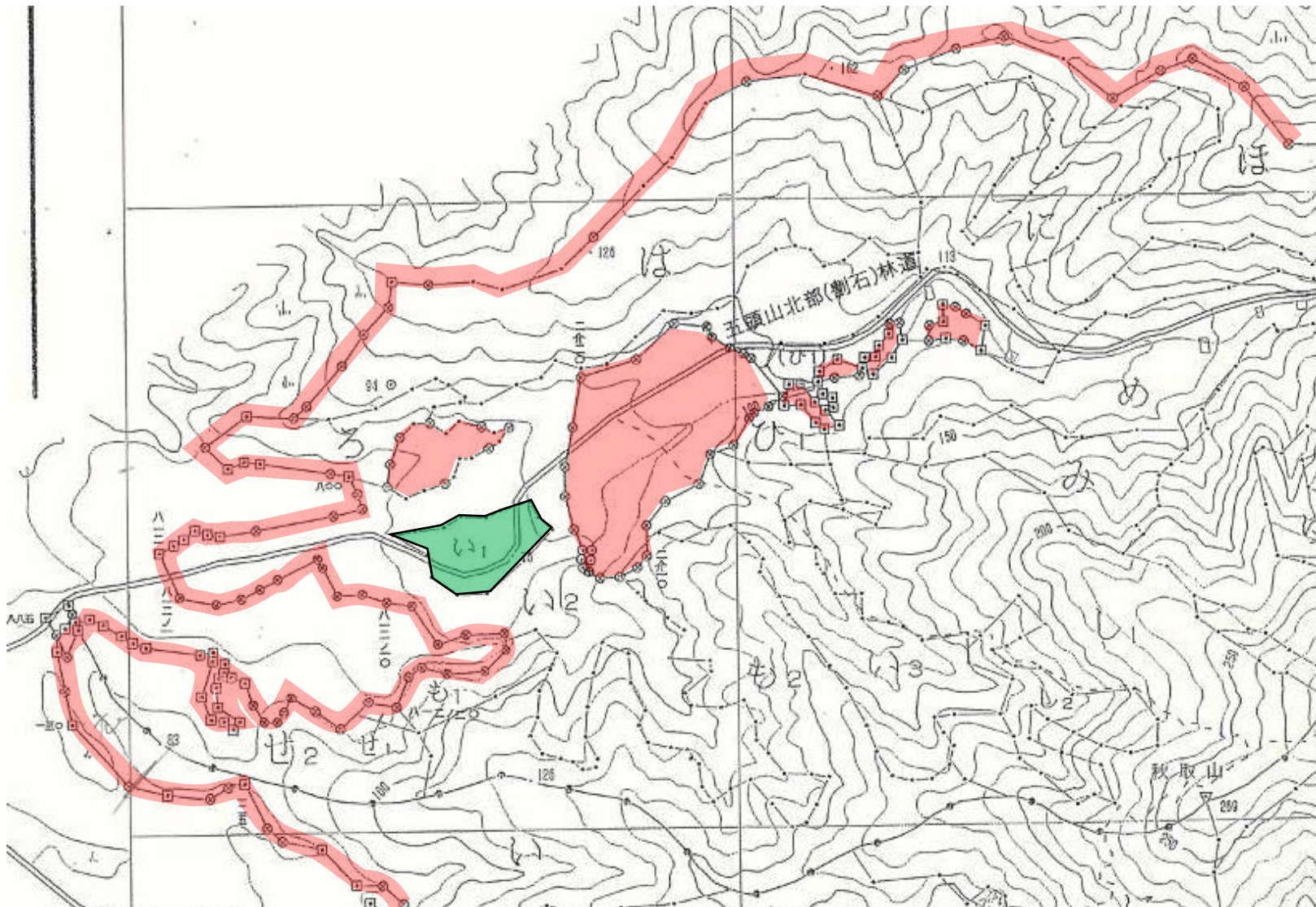


N

縮尺 1 : 5, 000

[illegible]

造林事業請負箇所位置図（下刈）



縮尺 1 : 5, 000

[illegible]