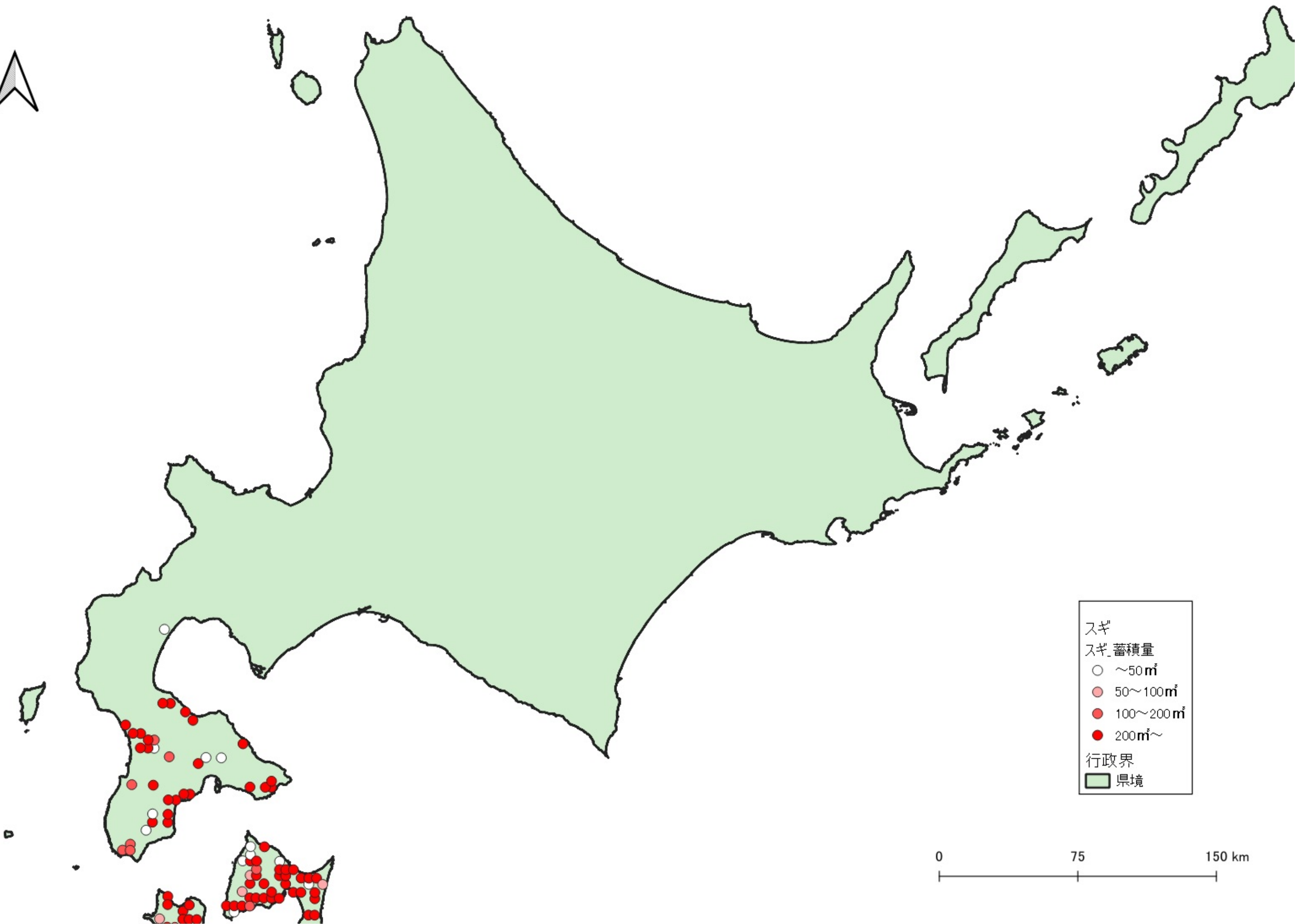


- スギ
スギ_蓄積量
- $\sim 50\text{m}^3$
 - $50\sim 100\text{m}^3$
 - $100\sim 200\text{m}^3$
 - $200\text{m}^3\sim$
- 行政界
- 県境

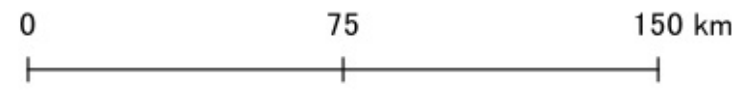
0 100 200 km

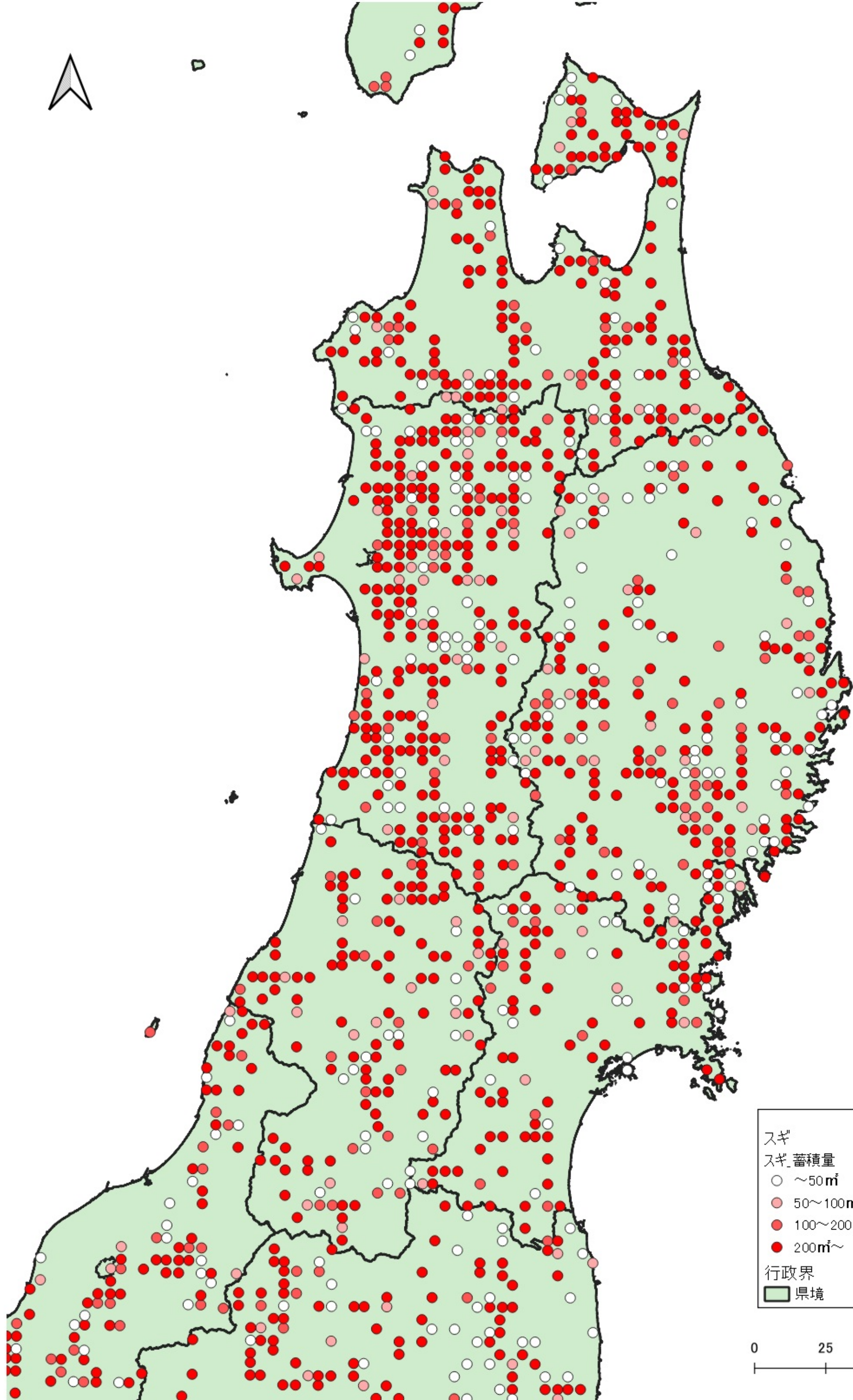


スギ
スギ蓄積量

- $\sim 50 \text{ m}^3$
- $50 \sim 100 \text{ m}^3$
- $100 \sim 200 \text{ m}^3$
- $200 \text{ m}^3 \sim$

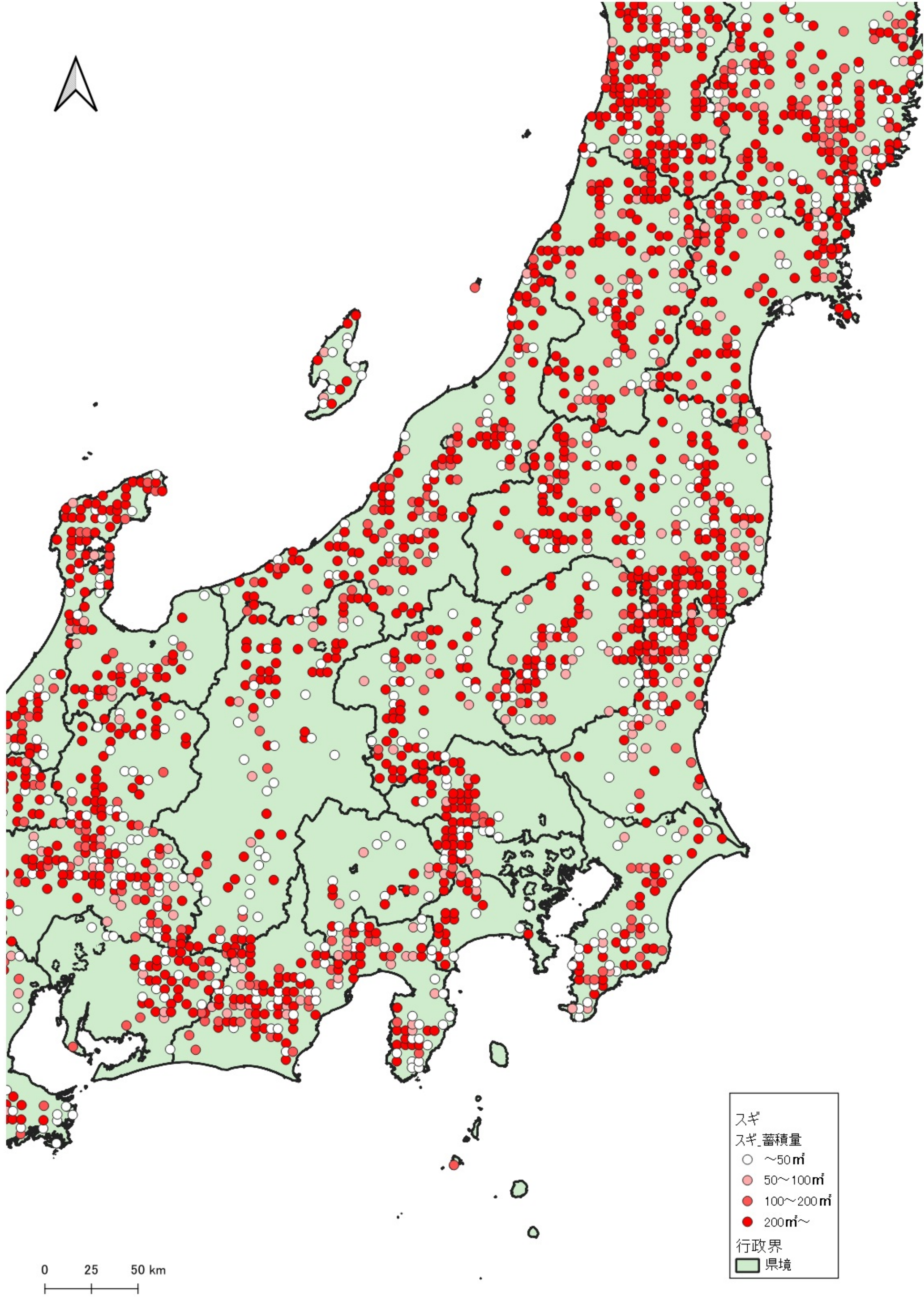
行政界
■ 県境

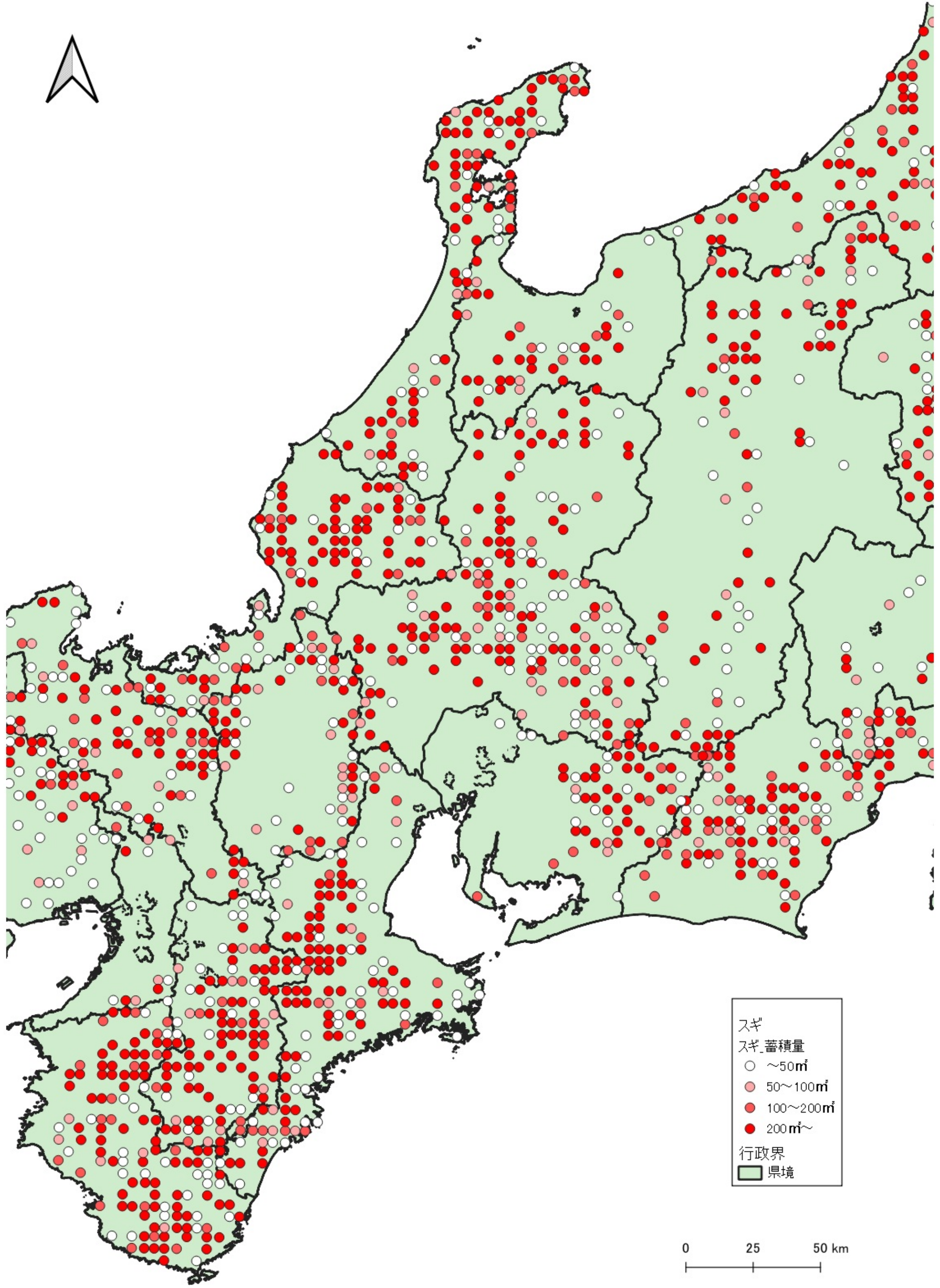




スギ
スギ蓄積量
○ ~50m³
● 50~100m³
● 100~200m³
● 200m³~
行政界
■ 県境

0 25 50 km



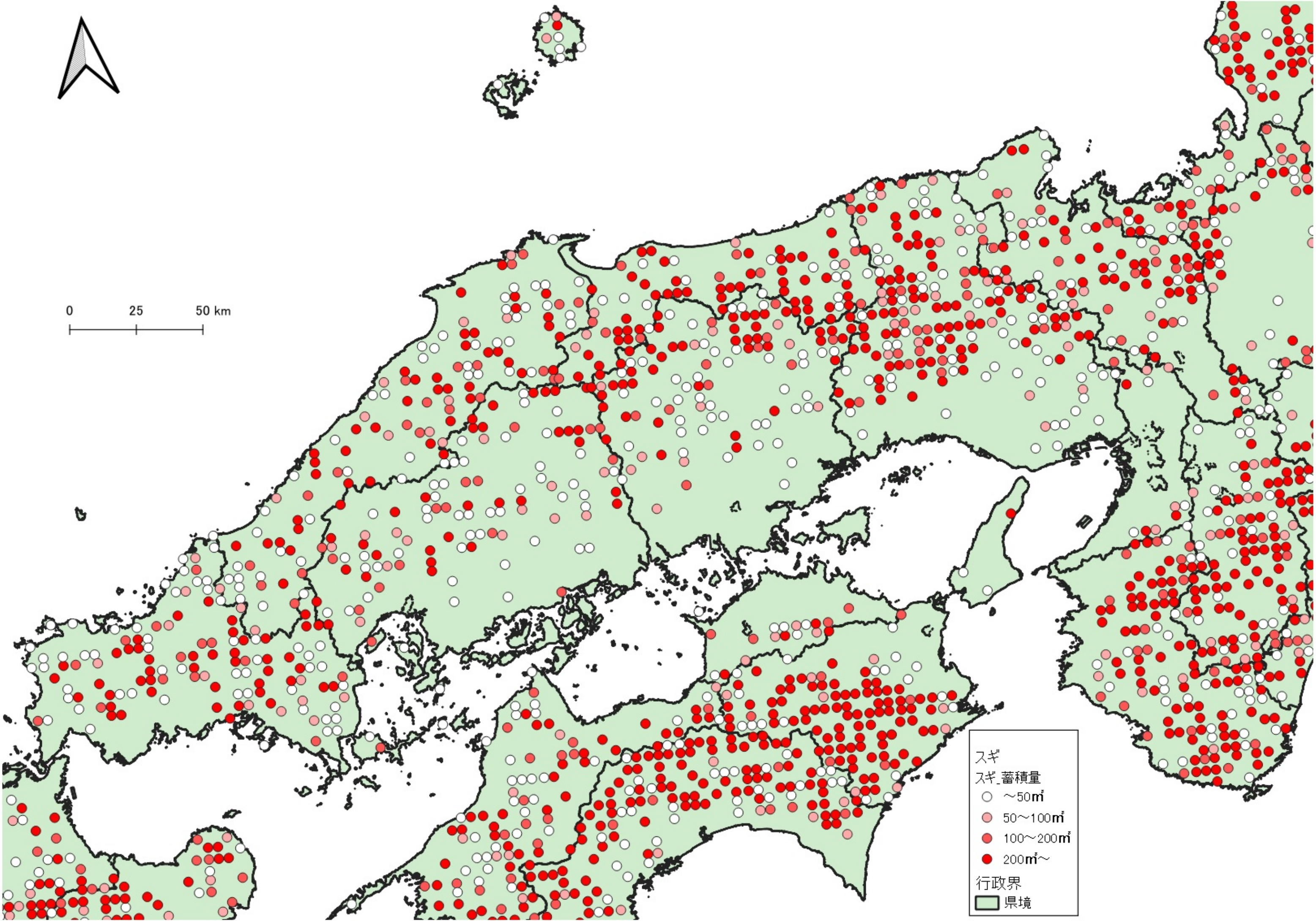


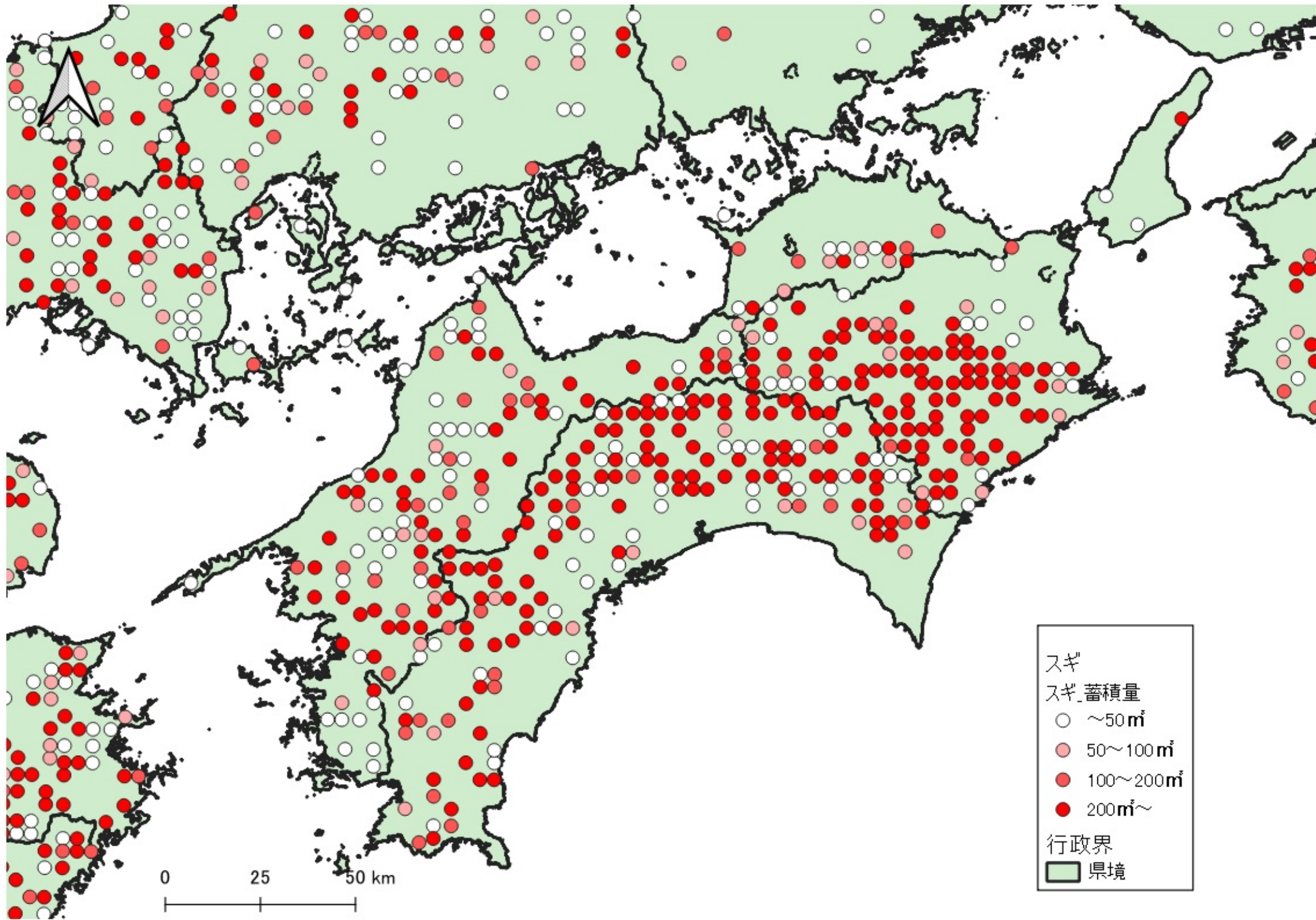
スギ
スギ蓄積量

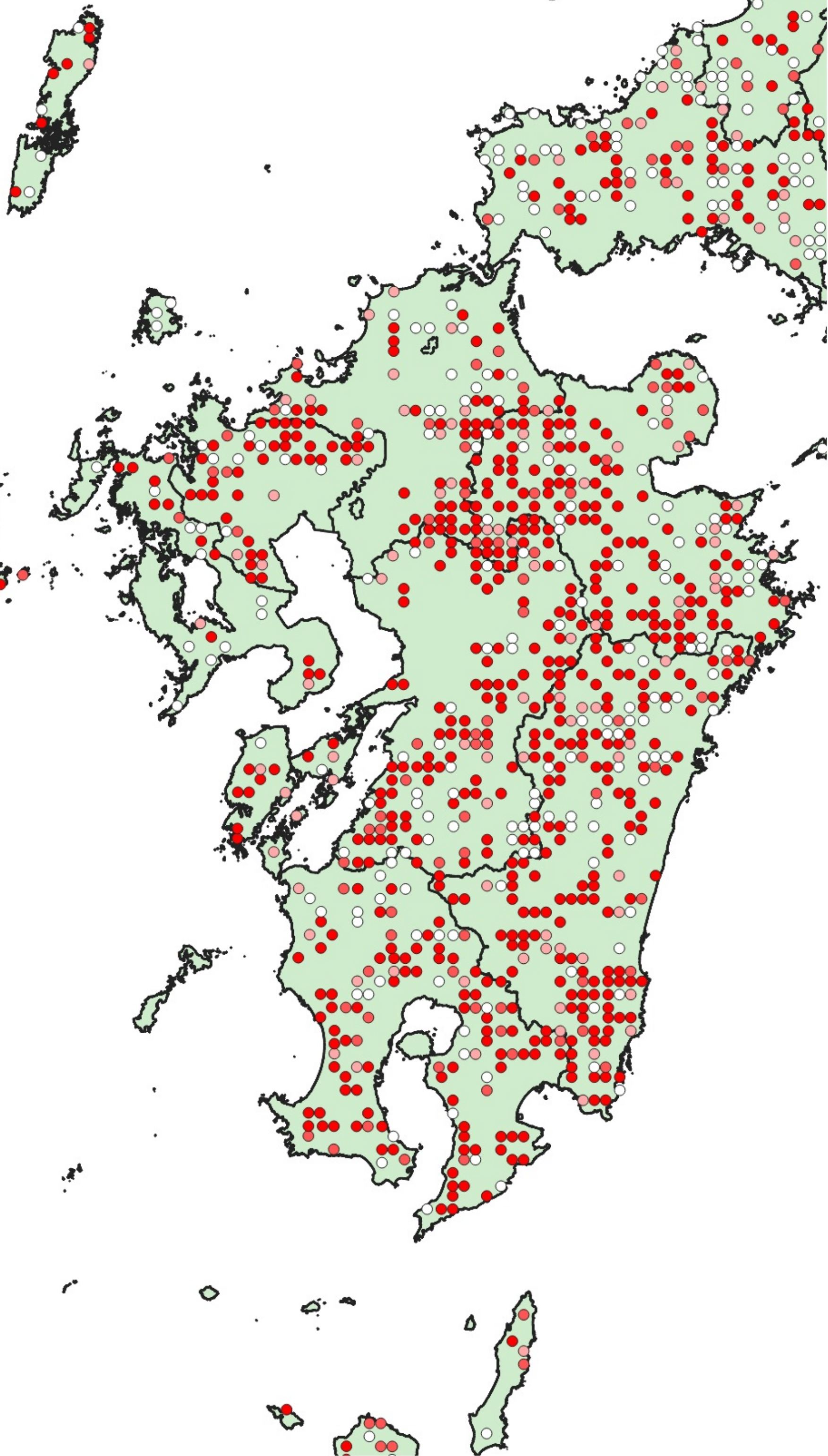
- $\sim 50\text{m}^3$
- $50\sim 100\text{m}^3$
- $100\sim 200\text{m}^3$
- $200\text{m}^3\sim$

行政界
■ 県境









スギ
スギ蓄積量

- ~50 m³
- 50~100 m³
- 100~200 m³
- 200 m³~

行政界
■ 県境

