



Australian Government

Department of Agriculture, Fisheries and Forestry
ABARES

The next chapter in *Australia's State of Forests Report*

Claire Howell

Manager, National Forest Inventory Australia

International Seminar to the Public in Kyoto, Japan
on 'Valuation of Forest Multi-Functions and
Integrated Approaches to Maximize its Benefits'

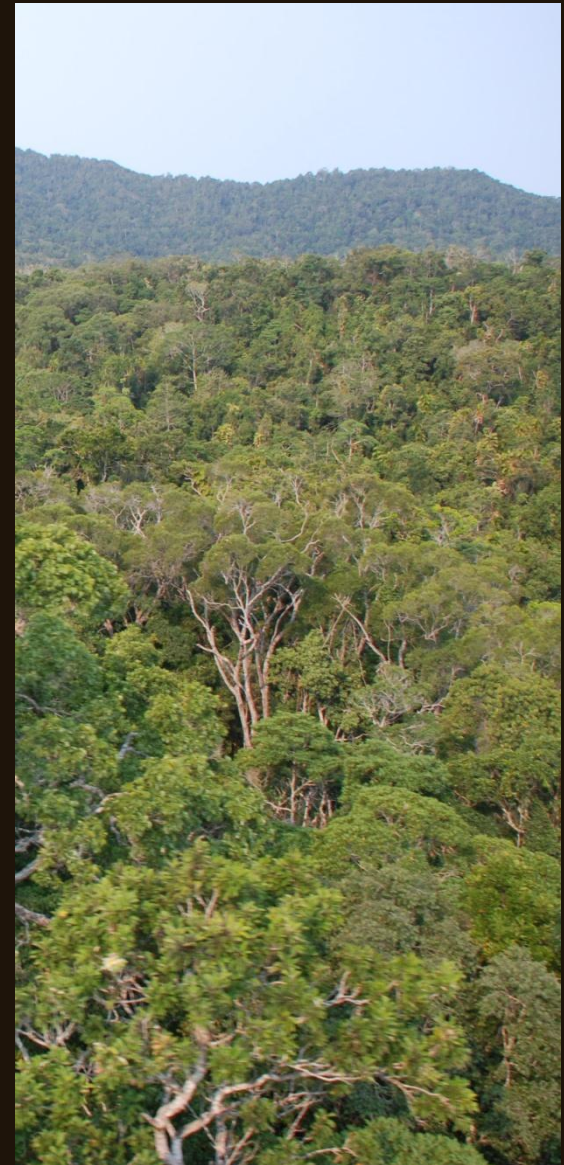
12 September 2013



Research by the Australian Bureau of
Agricultural and Resource Economics and Sciences

Overview of presentation

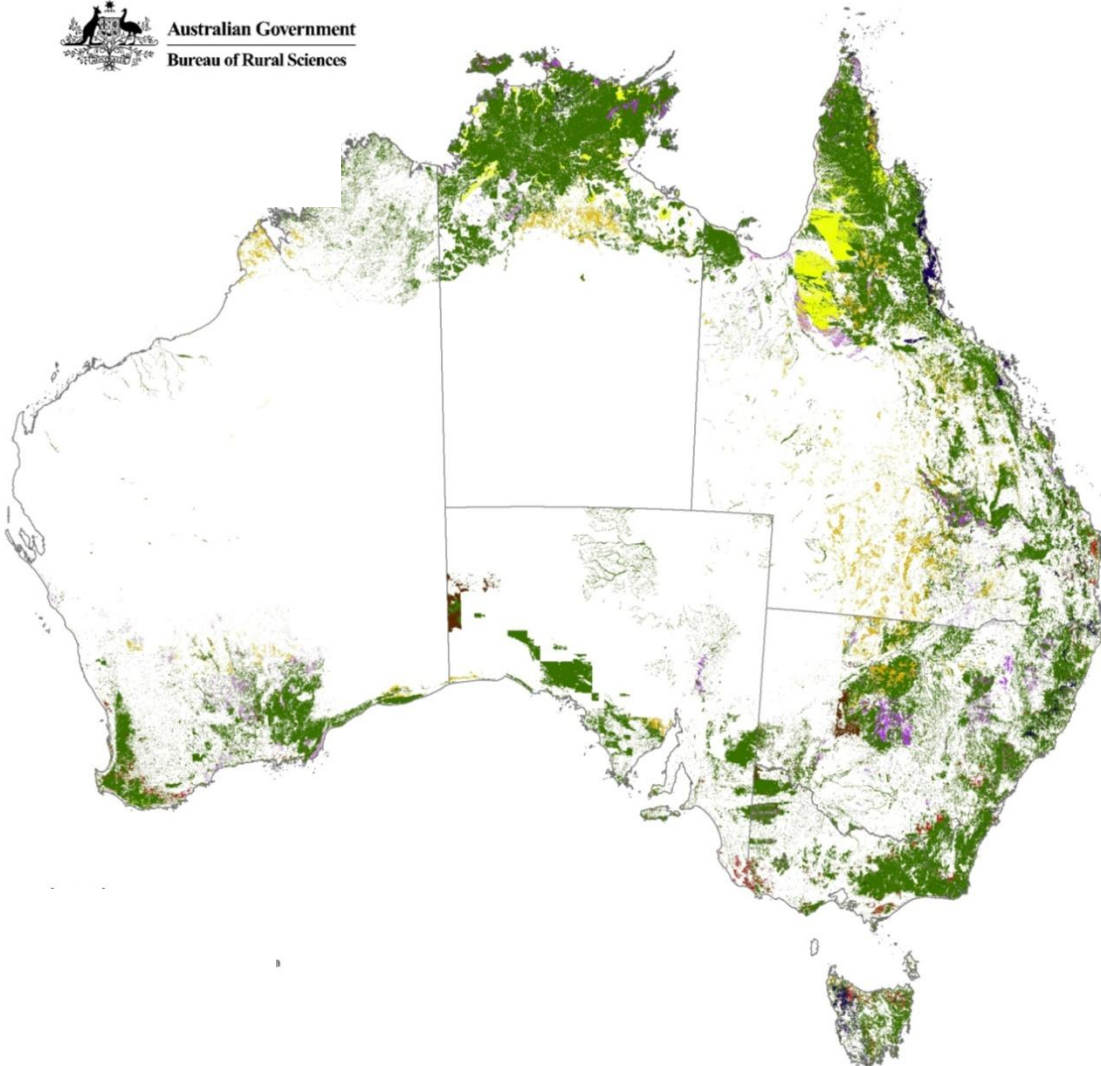
- Introduction to Australia's state of forests reporting
- Drivers for the report
- Framework of criteria and indicators
- Australia's State of the Forests Report
- Governance and coordination
- Advances
- Challenges and gaps
- Concluding remarks



Australia's Forests



Australian Government
Bureau of Rural Sciences



Australia's forests

- 19% of the continent

Eucalyptus spp. 78%

Acacia spp. 7%

Rainforest 2.2%

- Eucalypt (78%)
- Acacia (7%)
- Melaleuca (5%)
- Callitris (2%)
- Rainforest (2%)
- Casuarina (1%)
- Mangrove (1%)
- Plantations (1%)
- Other (3%)

Governance and institutional arrangements

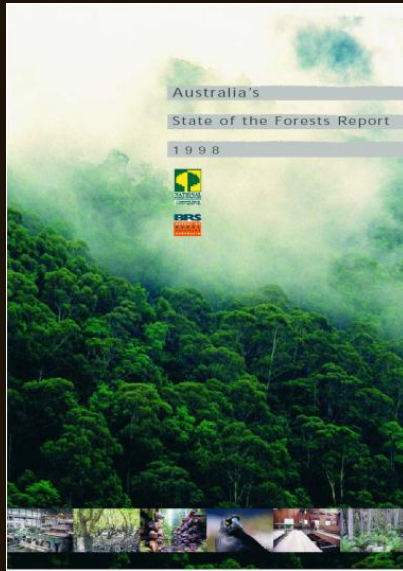
Federal government

- Trade, national forest policy, national biosecurity, national reporting, implementation of national legislation

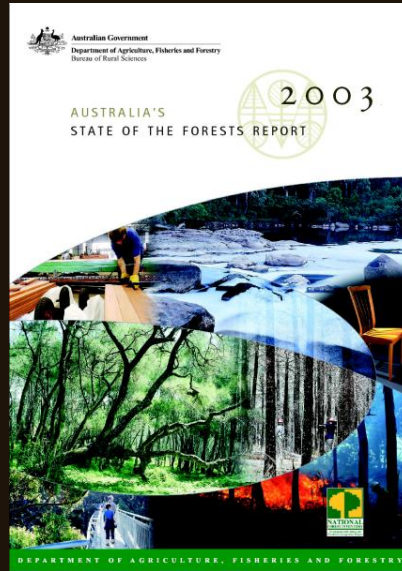
Provincial governments - 6 States and 2 Territories

- Forest management, monitoring and reporting, implementation of state legislation across public and private forests

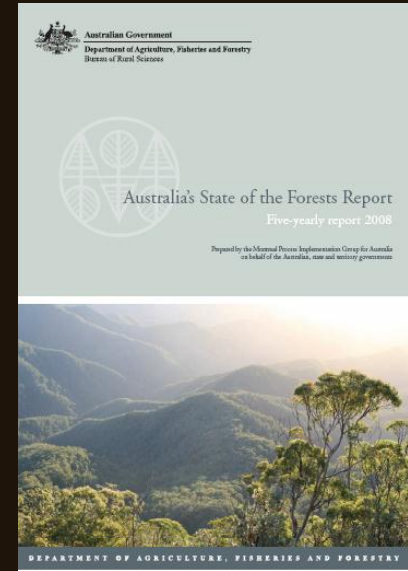
Australia's State of the Forests Reports



1998



2003



2008

2013 - the fourth in the five-yearly series of national reports

National mandate

National Forest Policy Statement

- Agreed to by State and Territory Governments with the Australian Government
- “to produce and publish a ‘state of the forests’ review every five years”

Regional Forest Agreements Act 2002

- The establishment of a comprehensive and publicly available source of information for national and regional monitoring and reporting in relation to all of Australia’s forests

International Drivers

United Nations Food and Agriculture Organization

- FAO Global Forest Resources Assessment
 - Five-yearly process for 'State of the World's Forests'
 - comprehensive - social, economic, biophysical
 - improved alignment with MPWG, ITTO, Forest Europe, OFAC (Observatoire des Forêts d'Afrique) and COMIFAC (Observatoire des Forêts d'Afrique Centrale)
 - Australia participates as a member country of the UNFAO



International Drivers

Montreal Process Working Group for the conservation and sustainable management of temperate and boreal forests

- To improve understanding of sustainable forest management within and between member countries
- Standardised framework of 7 Criteria with Indicators
- 12 member countries, covering 90% of temperate and boreal forests
- Five –yearly country reports

- Argentina
- Australia
- Canada
- Chile

- China
- Japan
- Mexico
- New Zealand

- Russian Federation
- Republic of Korea
- United States of America
- Uruguay

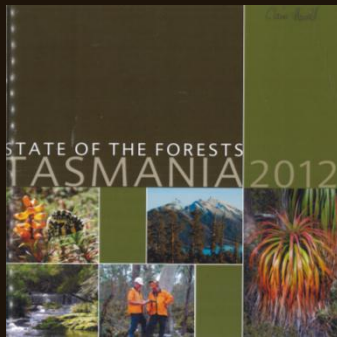


Montréal Process framework of 7 criteria & indicators

	Australia - 44 indicators	MPWG - 54 indicators
1. Biodiversity	9	9
2. Productive Capacity	5	5
3. Ecosystem Health	2	2
4. Soil & Water	5	5
5. Carbon	1	3
6. Social & Economic Benefits	17	20
7. Legal & Institutional Framework	5	10

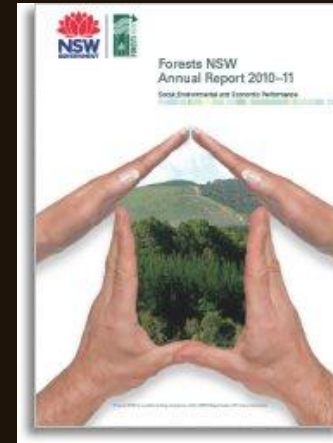


Montreal Process in Australia



Tasmania

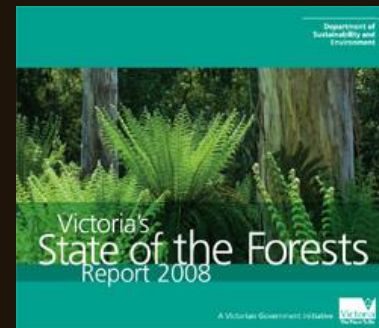
New South Wales



Victoria



Western Australia



Australia's State of the Forests Report 2013

Governance

- Forestry and Forest Products Committee (FFPC)
 - State and territory coordinators endorsed by FFPC

State and Territory engagement

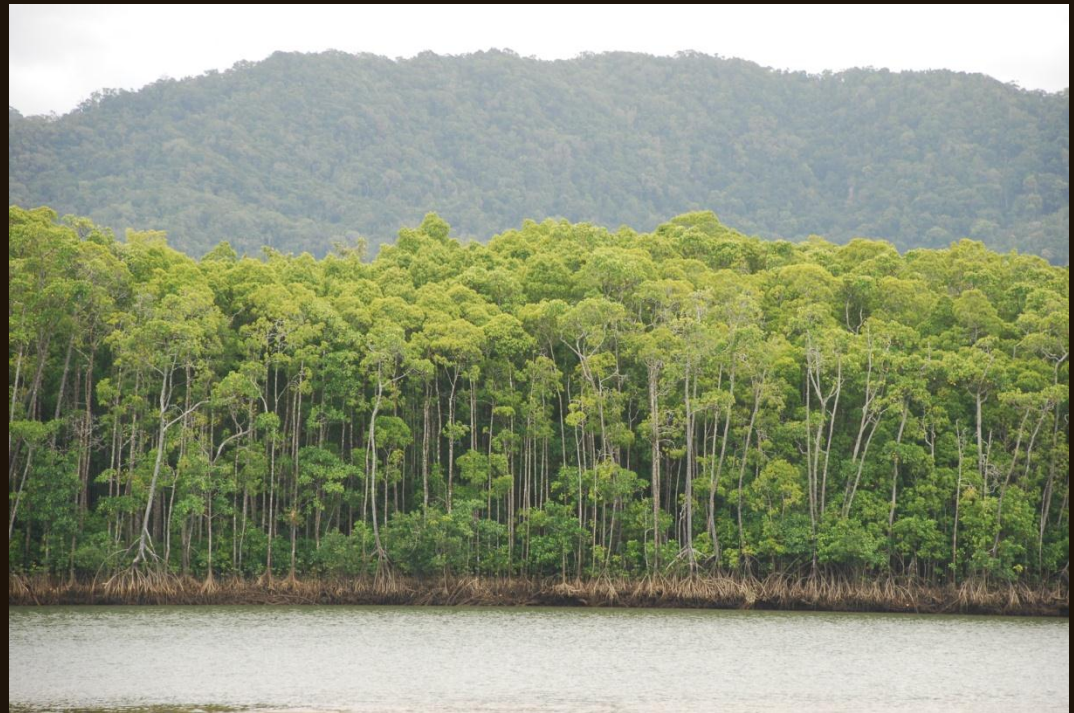
- National Forest Inventory Steering Committee
- Montreal Process Implementation Group for Australia
- SOFR 2013 data date-stamp
– 30 June 2011



SOFR 2013 data advances

Fundamental datasets

- Forest cover
- Forest tenure
- Protected areas



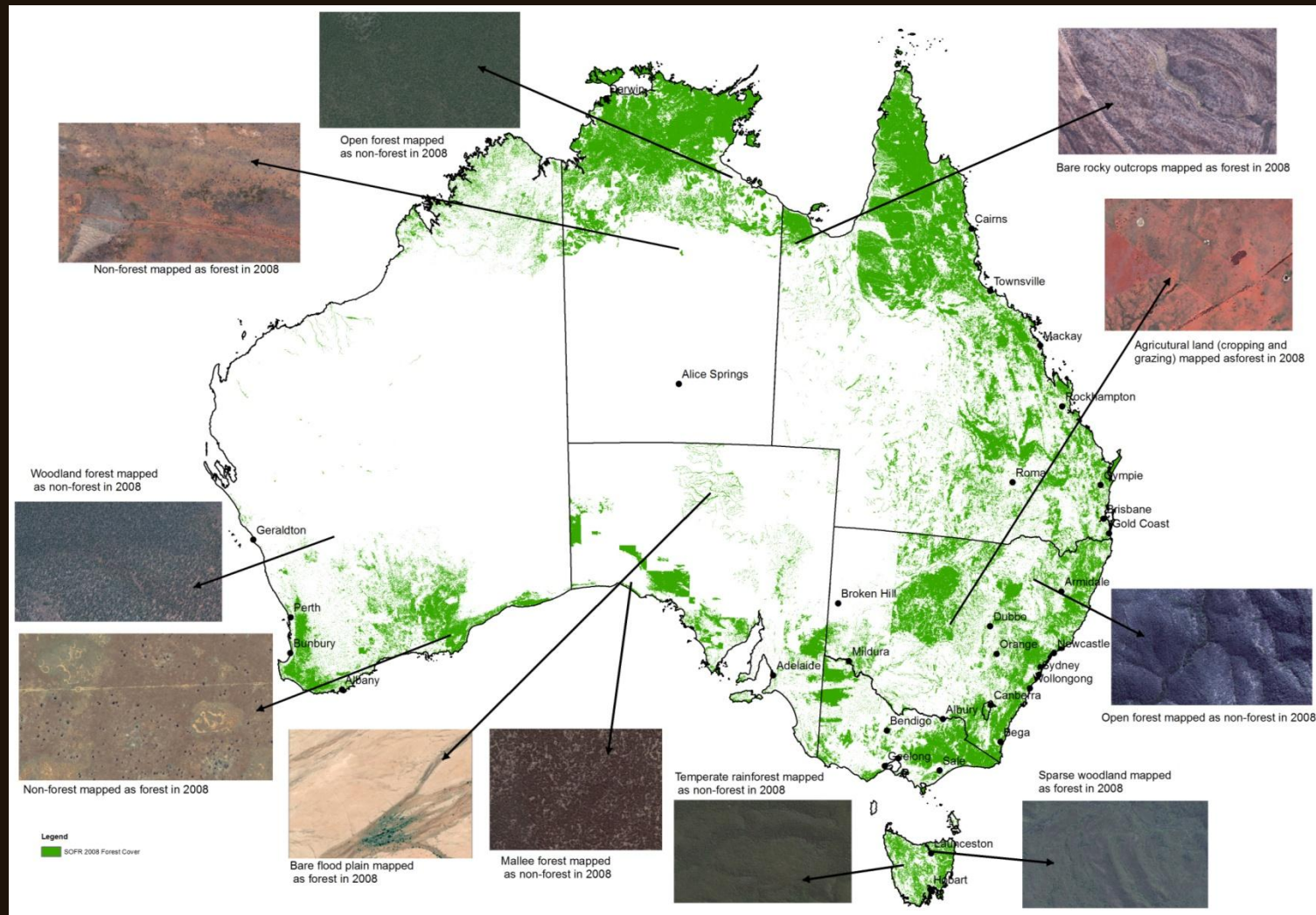
Fundamental datasets

New forest cover methodology for SOFR 2013

- Multiple Lines of Evidence approach - uses a range of available forest cover datasets
- Confidence classes (high, moderate or low) assigned to the National Forest Inventory forest cover dataset
- Outcomes validated in consultation with state & territory agencies
- Led to a more accurate and stable forest cover figure
- Process endorsed by National Forest Inventory Steering Committee

Validation of forest cover

Australia's forest cover 2008



Fundamental datasets

New national tenure data

- Based on same compilation principle as previous SOFRs
- Improved consistency and coordination with state and territory land title offices
- Differences between SOFR 2008 and SOFR 2013 are both actual change and mapping irregularities
- Privately managed forests continue to dominate
 - Private freehold, leasehold and Indigenous managed lands

Fundamental datasets

New national conservation lands database (NCLD)

- Private reserve system is an element of the NFPS
- Conservation covenant mechanisms on private land not previously included
- NCLD developed by the Australian government since SOFR2008
- Covenant processes include
 - Trust For Nature (Victoria)
 - Nature Conservation Trust (NSW)
 - National Trust of Australia (Western Australia)

SOFR 2013 data advances

Conservation and production

- Forest dependent & forest dwelling species
- Threatening processes
- Genetic information
- Forest commerciality
- Silvicultural systems



Forest dependent and forest dwelling species

- New national list of forest-dwelling and forest-dependent vertebrates compiled
- Updated forest dwelling and forest-dependent plant list
- Improvement in species information
- Forest dwelling and forest dependent lists presented by national forest types



Threatening processes

- Inclusion of the reasons for addition of forest-dwelling flora and fauna to national threatened species list
- For the first time, an assessment of the primary, secondary and tertiary threats for all forest-dwelling species listed as threatened under the national biodiversity conservation act



Genetic information

- Australia's submission to the FAO Forest Genetics Resources Assessment 2012
- More thorough response compared to SOFR 2008



Conservation and production

Silvicultural systems

- New national database on silvicultural systems implemented in multiple-use public native forests
- Data supplied by state forest management agencies
- Selection logging is the predominant harvest system used in native forests



Indigenous-owned and Indigenous-managed forests

- New nationally consistent database assembled from publicly available data
- Developed in consultation with relevant Indigenous organisations and as part of the National Indigenous Forestry Strategy
- Four land tenure and management categories
 - Indigenous owned
 - Indigenous managed
 - Indigenous co-managed
 - Other special rights



Employment and demographic time-series data

- Population and housing census data 2006 and 2011 included
 - SOFR 2008 included only 2001
- Social indicators underpinned by contemporary data with trends
 - Employment
 - Wages
 - Resilience and adaptability of forest dependent communities
 - Resilience and adaptability of forest dependent Indigenous communities

Challenges and Gaps

- Criterion 1 – Conservation and biodiversity
 - growth stage data
 - forest fragmentation data
 - invertebrate fauna and micro-organisms
- Criterion 4 – Soil and Water
- Tenures other than multiple-use public native forests and plantations
- Reduced capacity in states and territories to participate in drafting review workshops compared with previous reports

Australia's State of the Forests Report 2013

- most comprehensive and contemporary report on Australia's forests
- meets national reporting requirements
- inform Australia's international forest-related reporting activities
- new national information products and datasets
- data gaps
- consultative process between the Australian government and all state and territory governments
- supports Australia's progress towards the conservation and sustainable management of Australia's forests



Thank you

Claire Howell

claire.howell@daff.gov.au