



# SUSTAINABLE FOREST MANAGEMENT IN BOTSWANA

Dr Mmasera Manthe-Tsuaneng

Director

Department of Forestry and Range Resources

TICAD VI Special Side Event on forest and land Restoration  
for Food Security and Resilience to Climate Change

World Agroforestry Centre

Nairobi, Kenya 26 August 2016

# Botswana in a Split Second

- Rainfall

Ranges from 200 to 650 mm per year

- Temperatures

Maximum: 25 to 40

Minimum: -3 to 18

- Vegetation

Gazette Forest Reserves

National Parks

Woodland and Shrub land

Range land



# Challenges of Climate Change

## **Frequent Drought**

- Poor rainfall conditions
- High Temperatures

## **Land Degradation**

- Inappropriate livestock practices
- Bush encroachment

## **Desertification**

## **Reduced Forest Cover**

# Sustainable Forest Management Initiatives

## Implementation of CBNRM Policy

Community Based Natural Resources Management Policy promotes management of natural resources by communities for their benefit to improve rural livelihoods and reduce poverty.



Woodland



Processing Factory



Equipment



# Sustainable Land Management (SLM)



Before: 09/11/2011



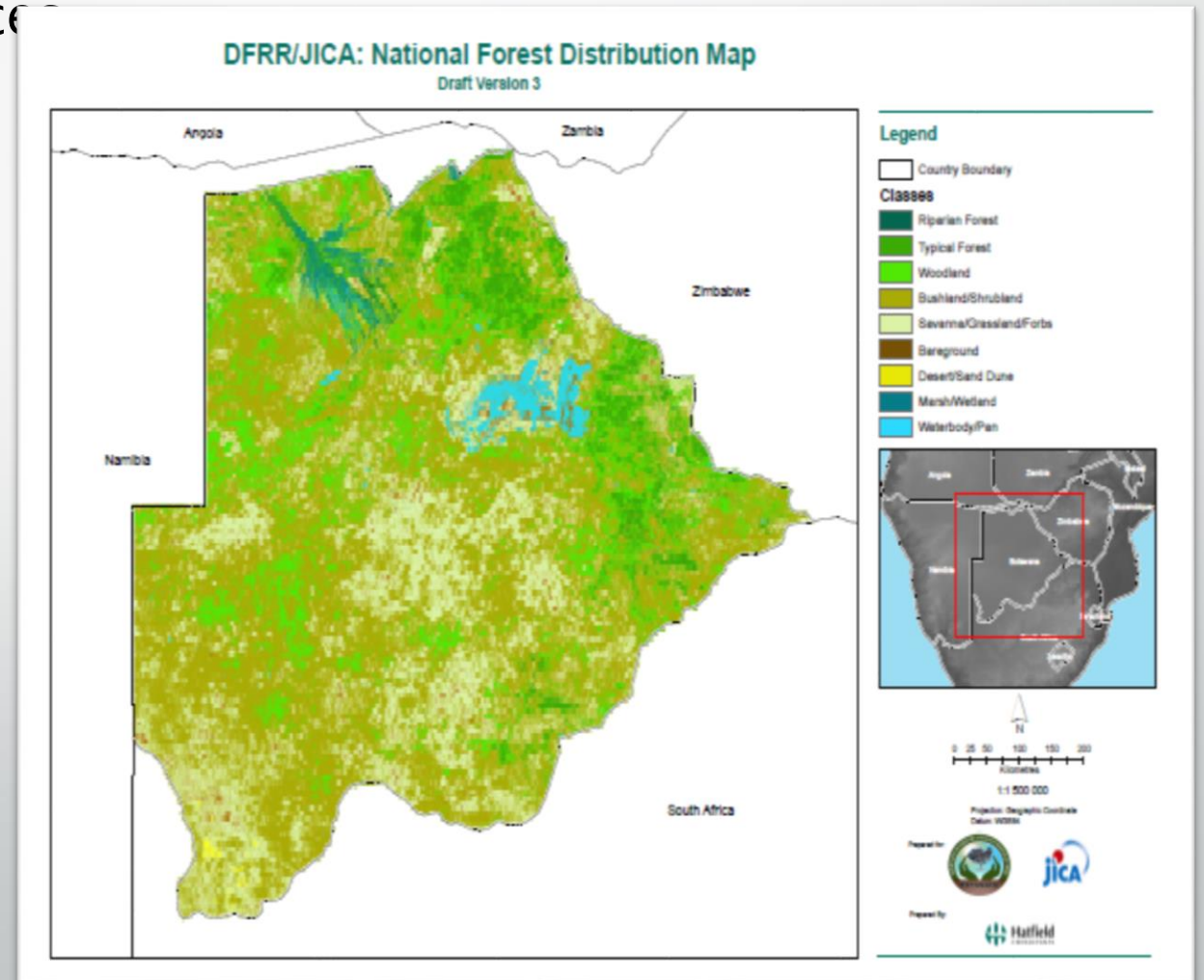
After: 03/07/2014

- Using SLM to improve the Makgadikgadi Ecosystem and to secure the livelihoods of rangeland dependent communities.
- Mainstreaming SLM in Rangeland Areas of Ngamiland District Landscapes for Improved Livelihoods
- Management Effectiveness of the Chobe-Kwando Linyanti Matrix of Protected Areas

# National Forest Monitoring System

To facilitate better management and regular updates on the state of the country's forest and range resources

- Data Collection Tool
- and database developed
- Monitoring tool developed
- Forest Distribution Map Produced
- Capacity Building





# Management of Invasive Plant Species

***Prosopis***: a major challenge in the Kgalagadi area

## Conflict

- leaves and pods used for feeding goats
- Main source of water depletion

## Compromise solution

- Removal of prosopis along the river banks and rangeland
- Collection of pods for feeding goats
- Possible establishment of a charcoal small scale factory
- Tree Planting
- Creation of employment



# Tree Planting Program

- Community Education in tree planting and restoration initiatives
- Target for National Plan ending 2016 is 1 million trees planted and now at 875 149.

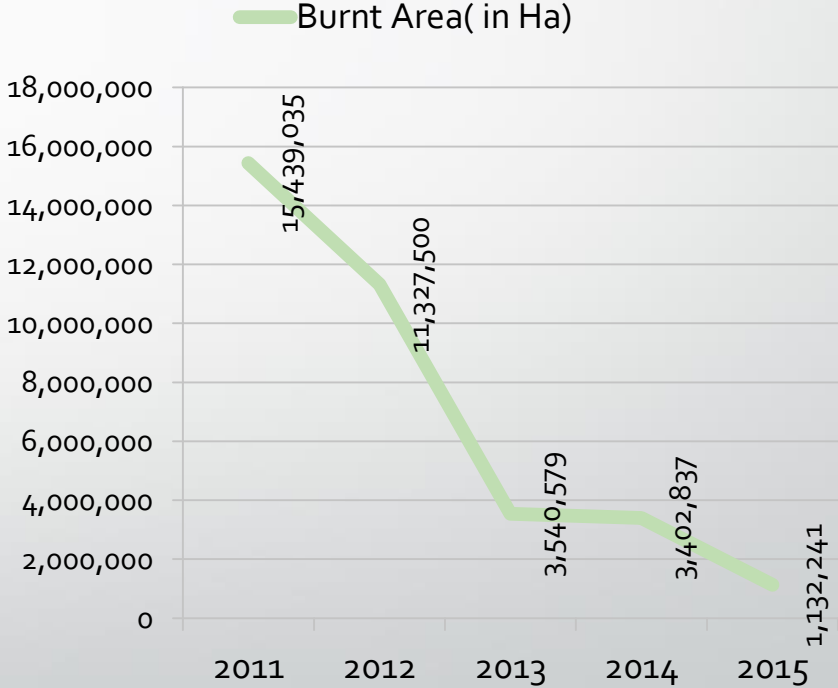




# Forest Fires Management



Burnt Area( in Ha)



# Conclusion

Going forward for Africa, the following need to be addressed:

- Funding- at National, Regional and Global levels
- Capacity Building – at all levels
- Water Harvesting Technologies
- Improved Land Restoration Technologies
- Land Tenure Systems