



木造化でつながる都市と農山村

“Constructing a Timber Future for Urban and Rural Settlement”

April 24, 2023

MITSUBISHI ESTATE CO.,LTD

General Manager of Wood Design Business Promotion Office

Yoshitaka Morishita

■ About The Mitsubishi Estate Group

The Mitsubishi Estate Group is engaged in various businesses through development of real estate, including office buildings, residential houses, hotels, warehouses and the group has wide range of functions such as design office, 2×4 house builder. With the brandslogan “A Love for People / A Love for the City”, we continue to work on the challenge of aiming for the creation of new value and the realization of sustained growth both in Japan and overseas.

A Love for People / A Love for the City



About The Mitsubishi Estate Group



■ About Group Companies of Wood Design



Our works① Miyako Shimojishima Airport Terminal

Project site: 1727 Irabu Aza Sawada, Miyakojima-shi, Okinawa

Owner: Mitsubishi Estate

Design/ Execution: NIKKEN SEKKEI Ltd./KOKUBA-Corporation Ltd./Daiyonekensetu Corporation

Site area: 31,580 m²

Facility area: 13,840 m²

Scale: One floor above ground

Construction: RC building + CLT roof construction

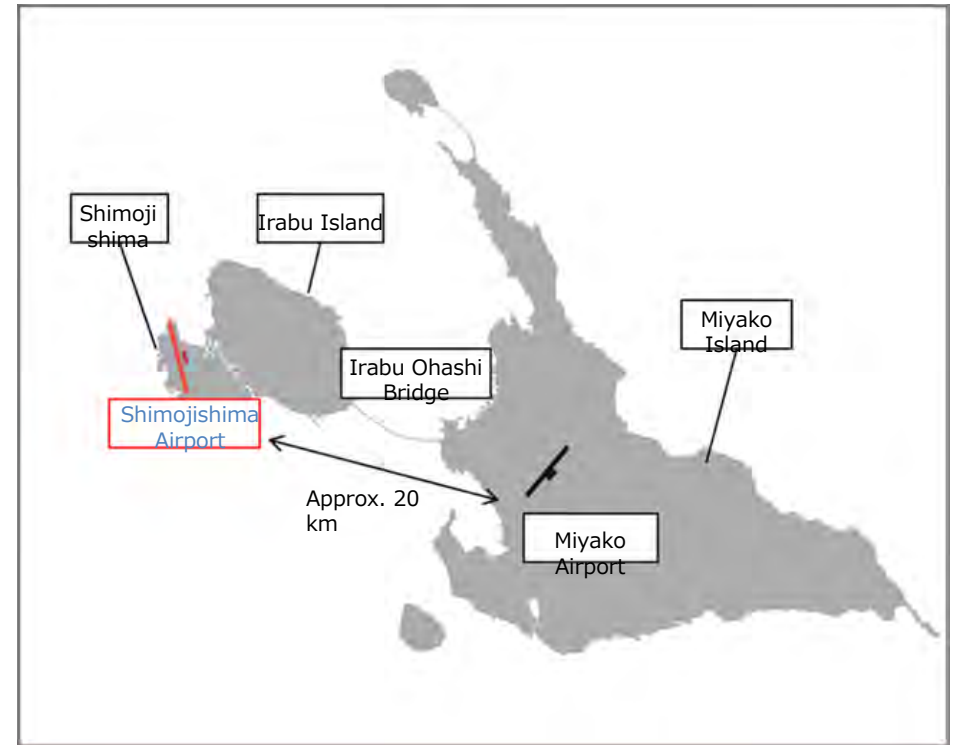
Airport facilities: Check-in counter: 12 counters
Boarding gate: 2 gates

Domestic and one international flight

Concessions: 2 shops

Retail: 3 shops

Bus station/Taxi stand/Car rental shop



■ Our works① Miyako Shimojishima Airport Terminal



■ Our works① Miyako Shimojishima Airport Terminal



Our works② PARK WOOD Takamori (Condominium)

Project site: 2-1 Takamori, Izumi-ku, Sendai-shi, Miyagi

Owner: Mitsubishi Estate

Design/
Execution: Takenaka Corporation

Use district: Category 2 medium-to-high-rise exclusive residential district

District plan: Parktown District Plan

Site area: 3,550.78 m²

Building area: 520 m²

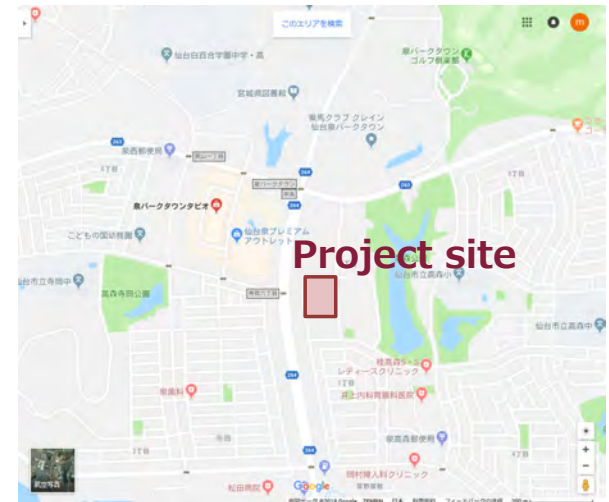
Gross floor area: 3620 m²

Scale: 10 floors

Building height: 33.95 m

Construction: Wooden + steel construction * Wood-based hybrid construction
Pillar/beam: Steel construction + "Moen" wood
Floor: RC building + CLT
Earthquake resistant wall: CLT

Work period: March 2018 – February 2019



■ Our works② PARK WOOD Takamori (Condominium)

Application range of wooden members



CLT floor:
4th-10th
floors

“Moen” wood
pillar: 2nd-10th
floors

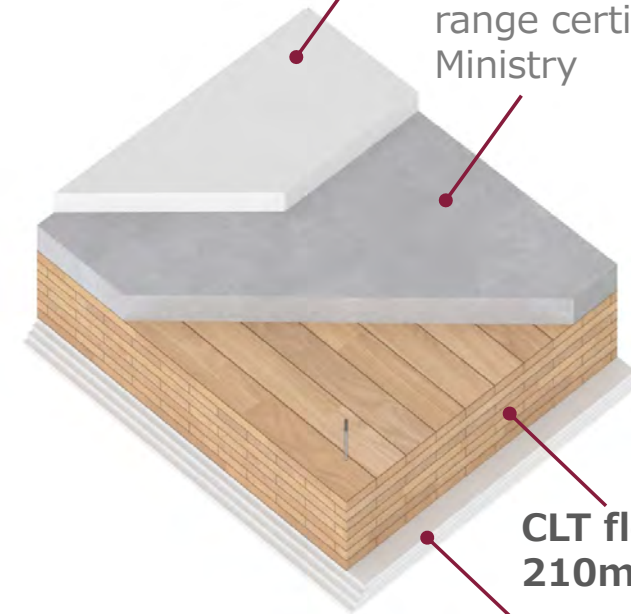


CLT earthquake resistant
walls: 1st-5th floors

SL plaster:
60mm-thick

Top concrete:
80mm-thick

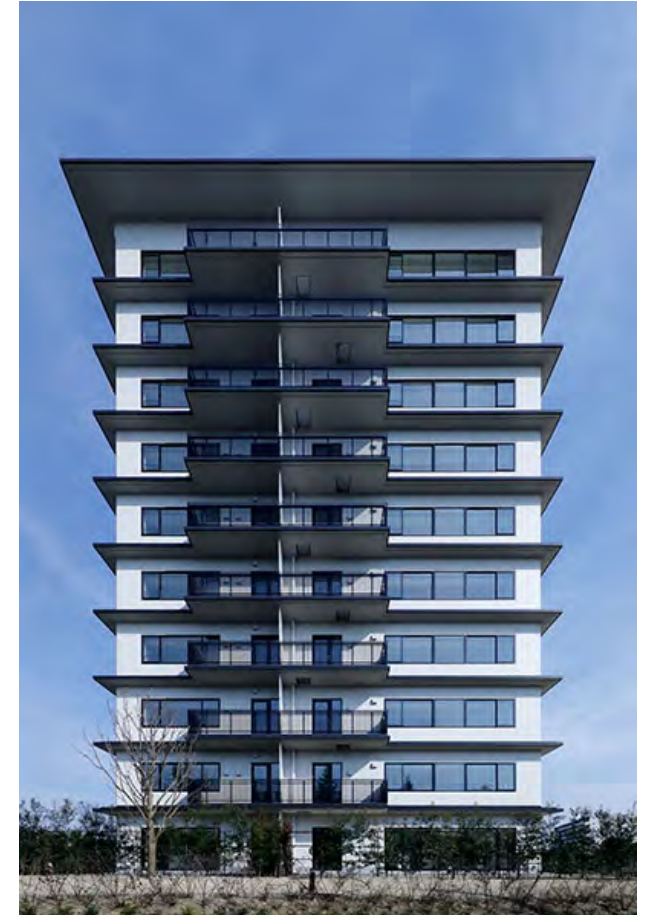
*Selective use within a
range certified by the
Ministry



CLT floor panel:
210mm-thick

Reinforced gypsum board:
15mm-thick x 3 sheets
Calcium silicate board:
15mm-thick x 1 sheet

■ Our works② PARK WOOD Takamori (Condominium)



■ Our works③ The Royal Park Canvas Sapporo Odori Park (Hotel)

Project site: 1-12-2 (Lot number 1-13-1) Chuo-ku, Sapporo-shi, Hokkaido

Owner: Mitsubishi Estate

Design: Mitsubishi Jisho Sekkei Inc.

Execution: Shimizu Corporation

Site area: 695.51 m²

Building area: 580.62 m²

Gross floor area: 6,157.06 m²

Scale: One floor below ground and eleven floors above ground

Building height: 40.75m (Max. height: 46.14m)

Construction: RC/wood construction for
Basement floor/1st -8th floor: RC building (Floor on the 8th floor: CLT construction)
9th -11th floor/Tower top floor: Wooden construction (Walls: Framework construction method, Floor: CLT construction)



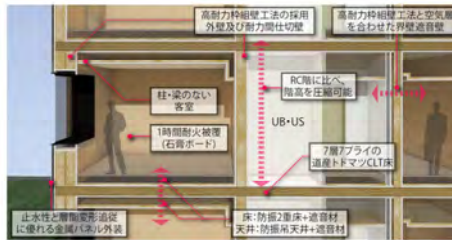
Our works③ The Royal Park Canvas Sapporo Odori Park (Hotel)

The upper three floors are made of wood

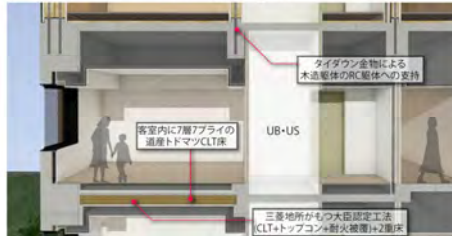


【高層木造ホテルを支える3層構造とその特徴】

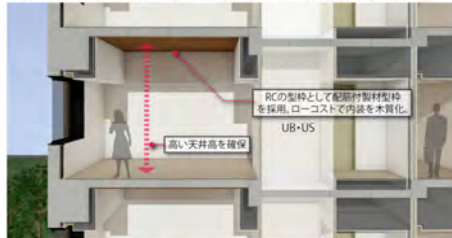
①9～11階：木造【壁：枠組壁工法 床：CLT床】



②8階：RC・木ハイブリット構造【柱梁：RC造 床：CLT床】



③3～7階：RC造【配筋付製材型枠を使用した木質化階】



■ Our works③ The Royal Park Canvas Sapporo Odori Park (Hotel)



■ Our works③ The Royal Park Canvas Sapporo Odori Park (Hotel)



■ Our works④ CLT PARK HARUMI (Pavillion)



■ Our works⑤ Various Usage

Exterior

New Project
(Fukuoka tenjin)



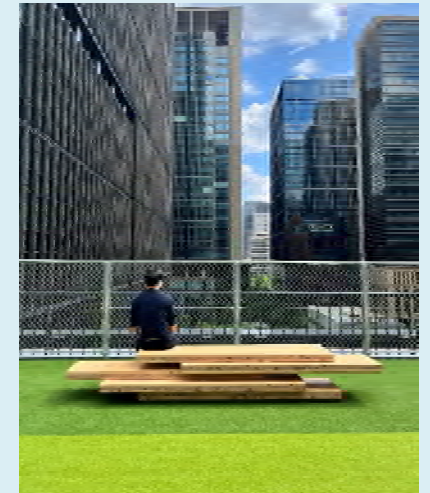
Interior

Our Group office
(marunouchi)



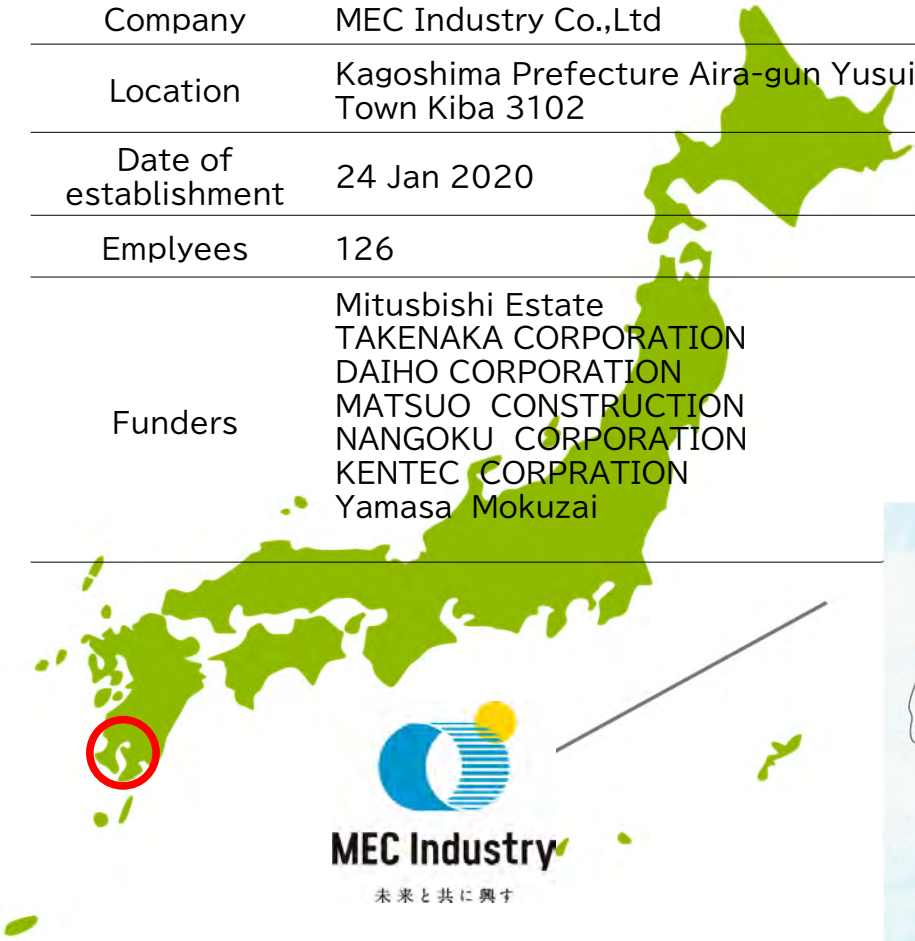
Furniture

CLT bench
(Otemachi Building)



■ About MEC Industry Co.,Ltd

Company	MEC Industry Co.,Ltd
Location	Kagoshima Prefecture Aira-gun Yusui Town Kiba 3102
Date of establishment	24 Jan 2020
Employees	126
Funders	Mitsubishi Estate TAKENAKA CORPORATION DAIHO CORPORATION MATSUO CONSTRUCTION NANGOKU CORPORATION KENTEC CORPRATION Yamasa Mokuzai

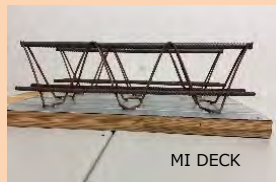


■ About Business Contents (MEC Industry)

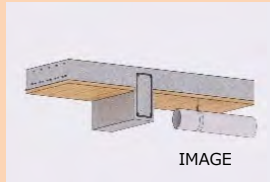
New Construction Materials Business



The new construction materials business develops and supplies new construction materials to promote the increasing use of wood for the interiors of high-and medium-rise buildings. To this end, the business offers wood, which boasts outstanding design characteristics, for use in reinforced concrete and steel buildings while minimizing the impact of construction work and reducing construction periods.



MI DECK



IMAGE

MOKUWELL Business



“MOKUWELL” is a portmanteau of the Japanese word for “wood”(moku) and the English word “wellness”. The MOKUWELL built using the prefabrication method of construction, in which standardized units manufactured at a plant are assembled on-site. This simple construction method reduces the workload and periods at construction site.



Timber Utilization Business



The timber utilization business sells construction materials, such as cross laminated timber and two-inch by four-inch timber used in the aforementioned standardized units, and by-products such as bark and sawdust.



CLT

2x4 LUMBER

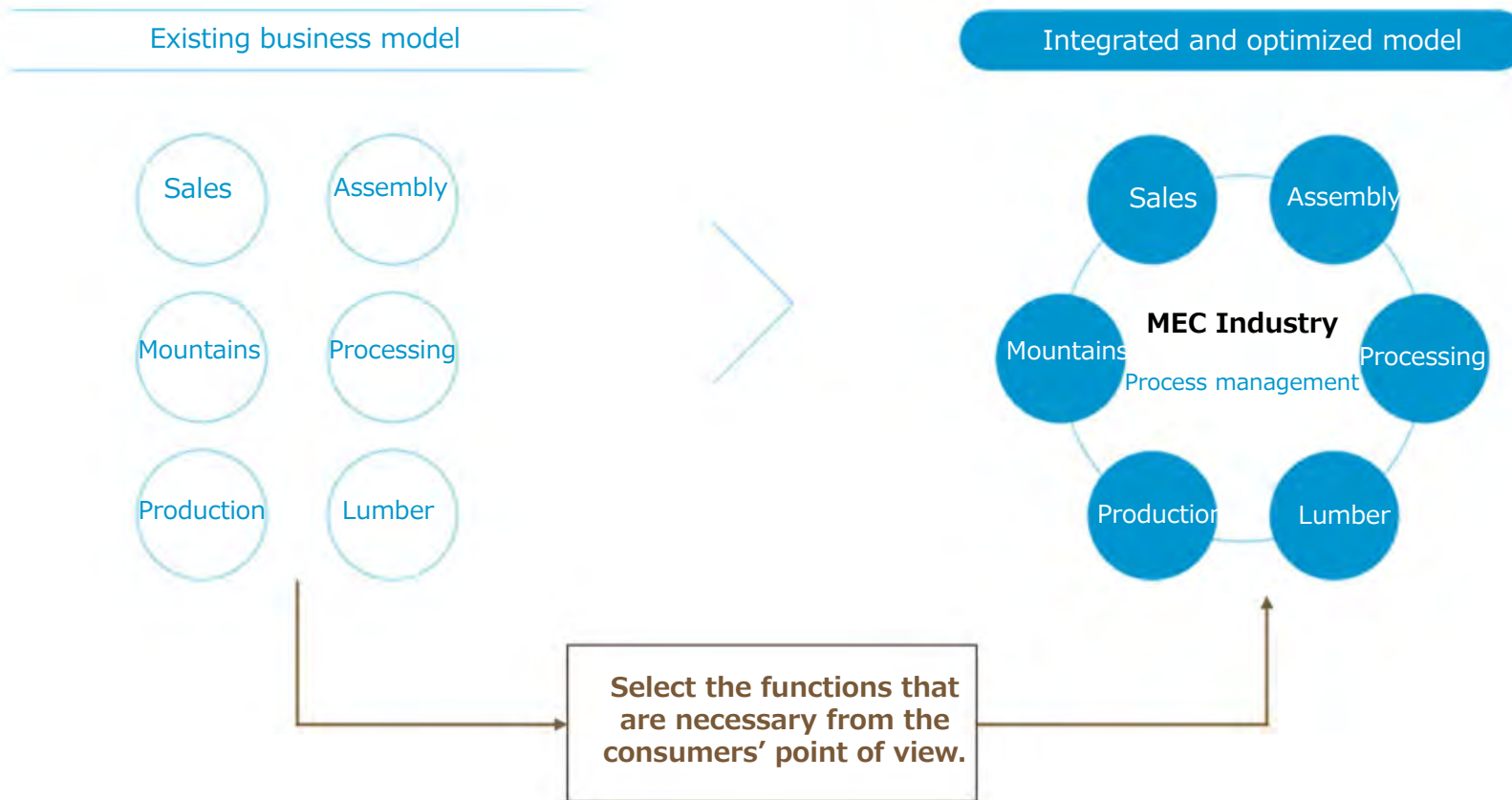


sawdust

bark

■ About Business Model (MEC Industry)

From a conventional model in which an individual business operator aims for optimization, an integrated and optimized model that brings the best out of the project management ability of Mitsubishi Estate was established.





A Love for People / A Love for the City



**MITSUBISHI
ESTATE**