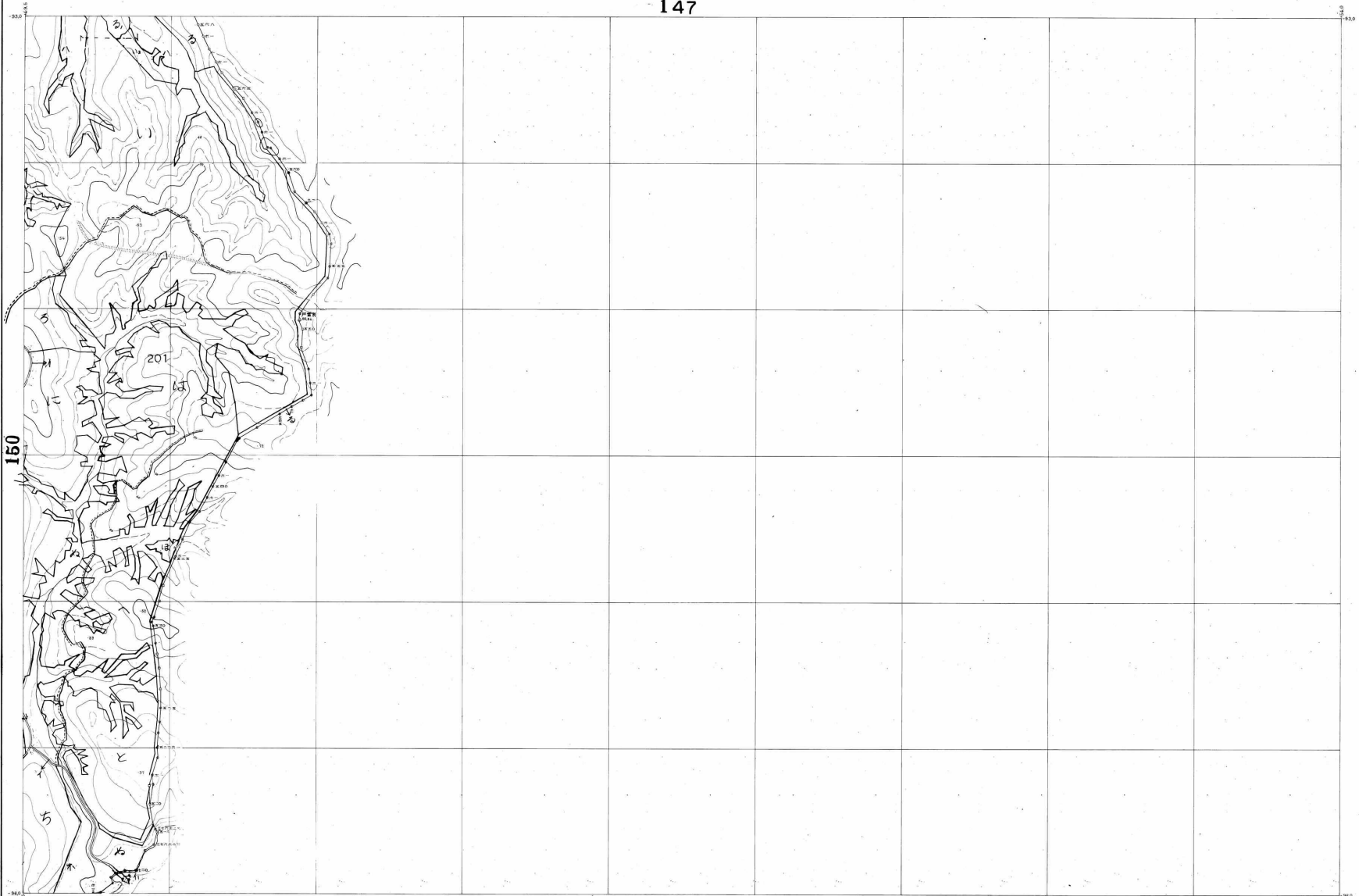


147



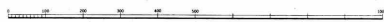
150

152

151

昭和45年測量
 1. (1) 地形図(25000) (2) 25000 (3) 25000 (4) 25000 (5) 25000 (6) 25000 (7) 25000 (8) 25000 (9) 25000 (10) 25000
 2. 地形図(25000) (2) 25000 (3) 25000 (4) 25000 (5) 25000 (6) 25000 (7) 25000 (8) 25000 (9) 25000 (10) 25000

1:5,000



東北測量株式会社

昭和五十七年二月複製