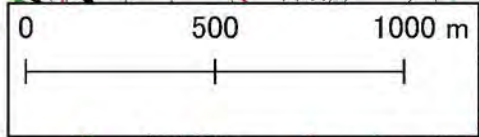
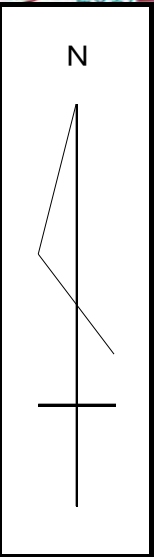







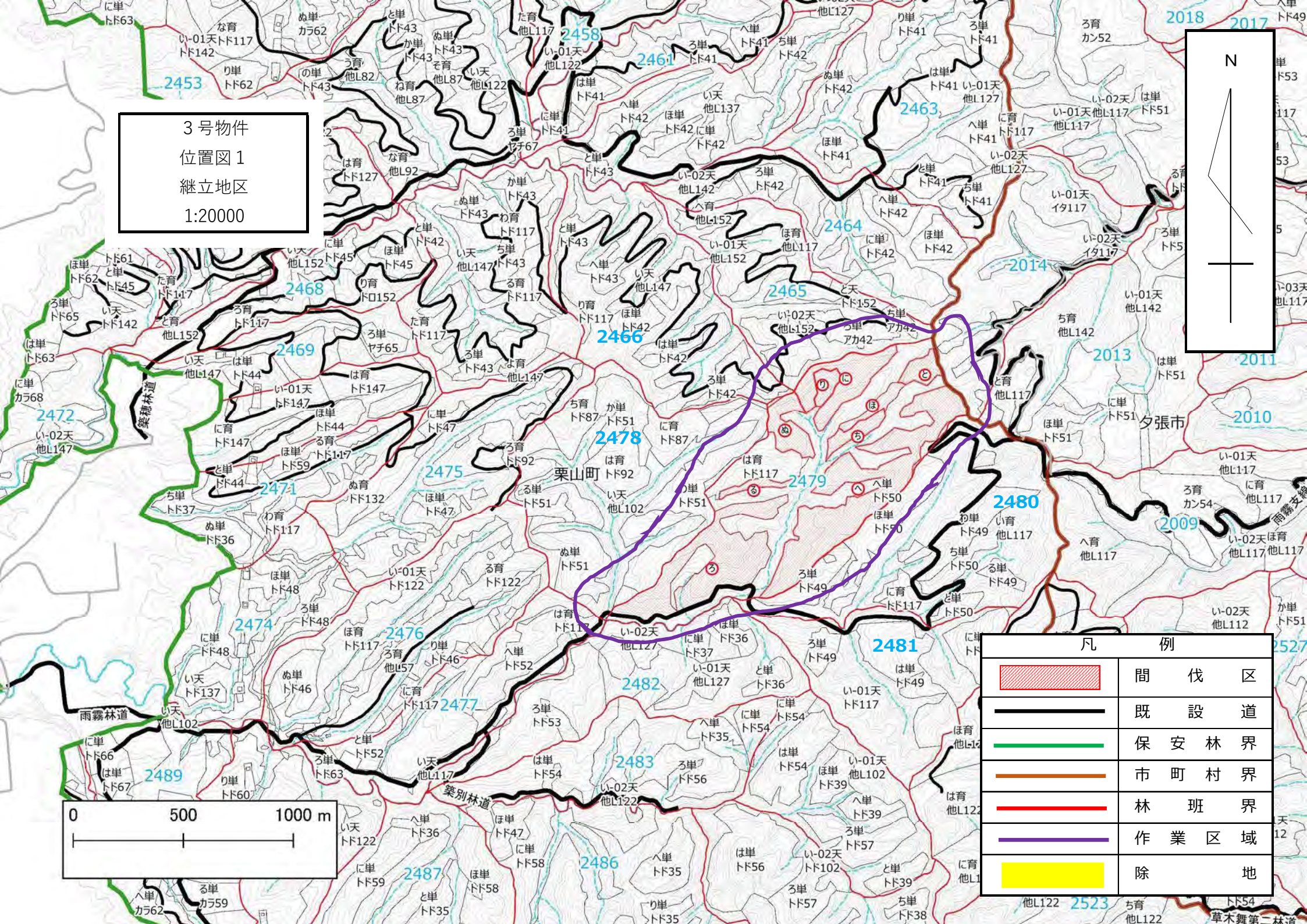
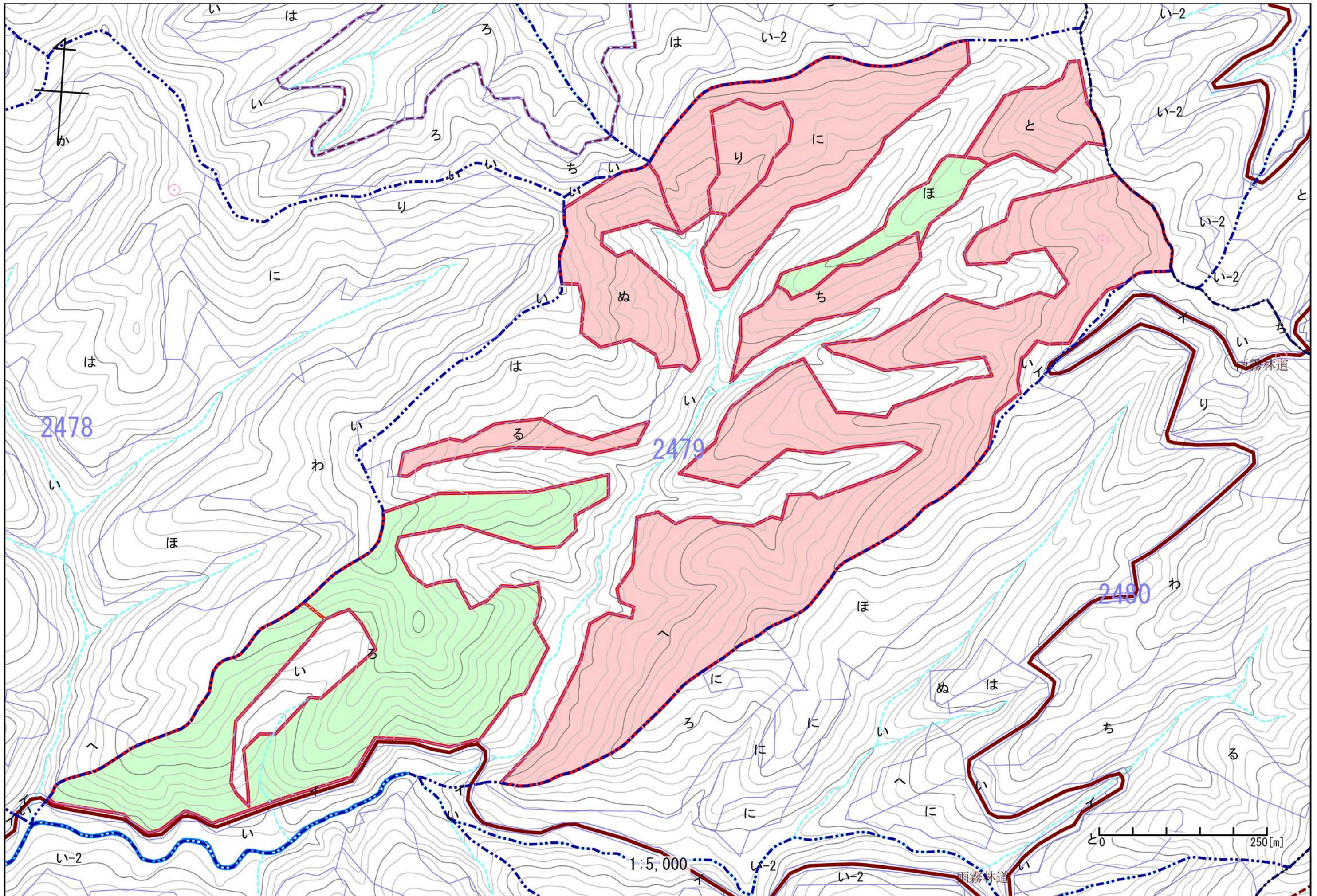


3号物件  
位置図1  
継立地区  
1:20000

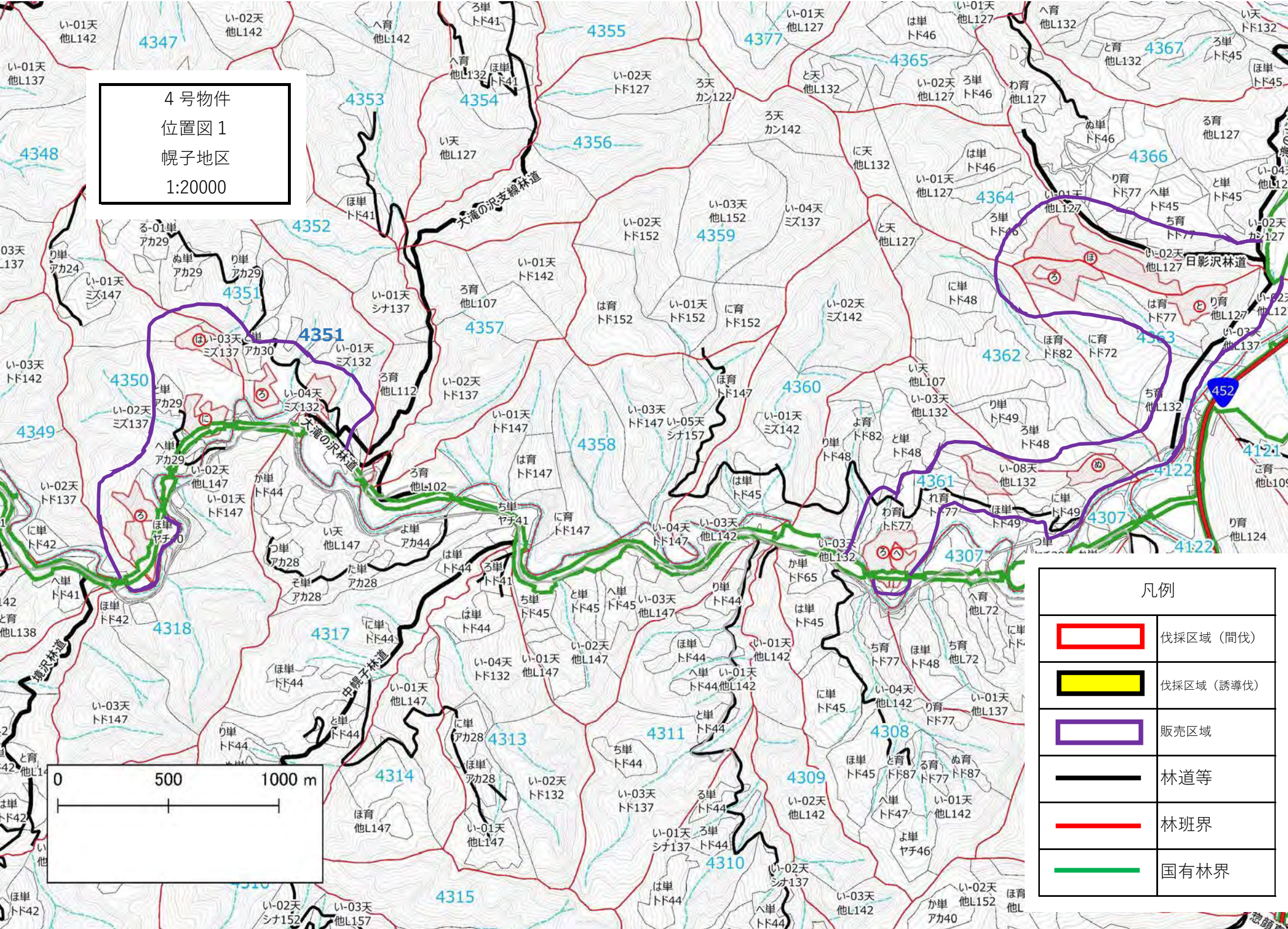








凡 例	
	間 伐 区
	既 設 道
	保 安 林 界
	市 町 村 界
	林 班 界
	作 業 区 域
	除 地



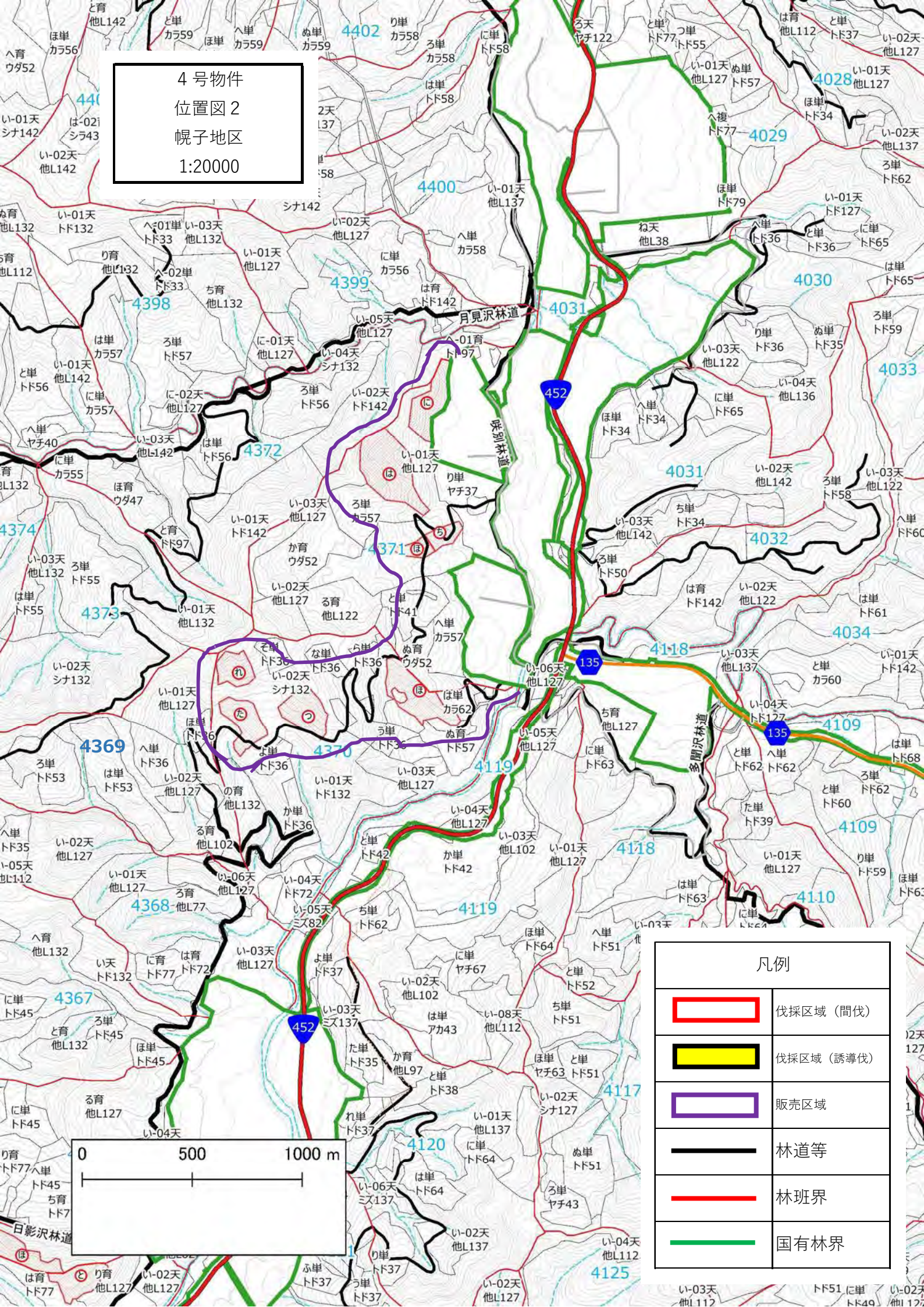






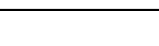
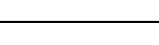
4号物件  
位置図1  
幌子地区  
1:20000

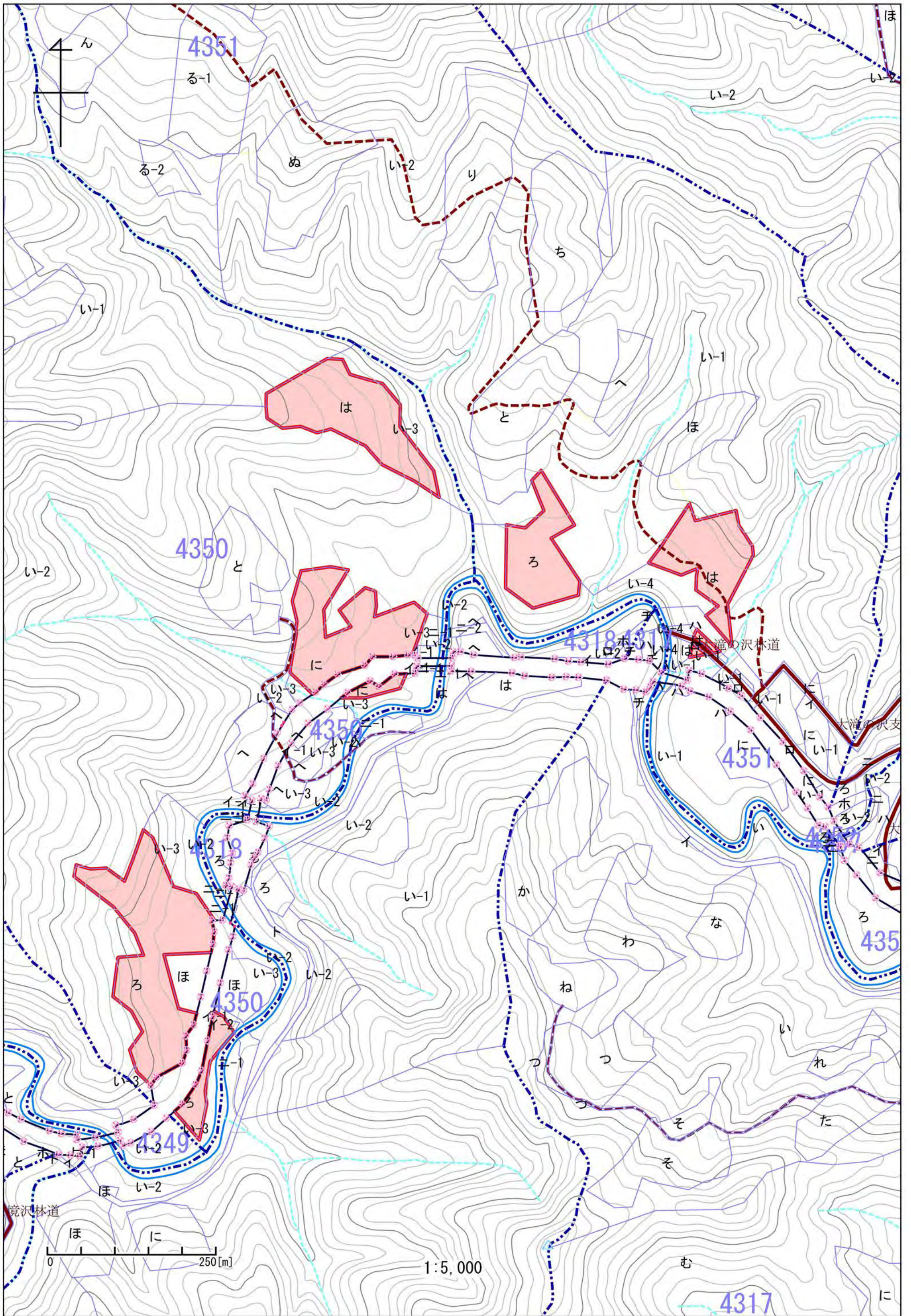


凡例	
	伐採区域 (間伐)
	伐採区域 (誘導伐)
	販売区域
	林道等
	林班界
	国有林界

4号物件  
位置図2  
幌子地区  
1:20000



凡例	
	伐採区域 (間伐)
	伐採区域 (誘導伐)
	販売区域
	林道等
	林班界
	国有林界



1:5,000

4351

4350

4350

4318

4318

4350

4349

4351

435

4317

