

# Notice : Close of Mountain Trails



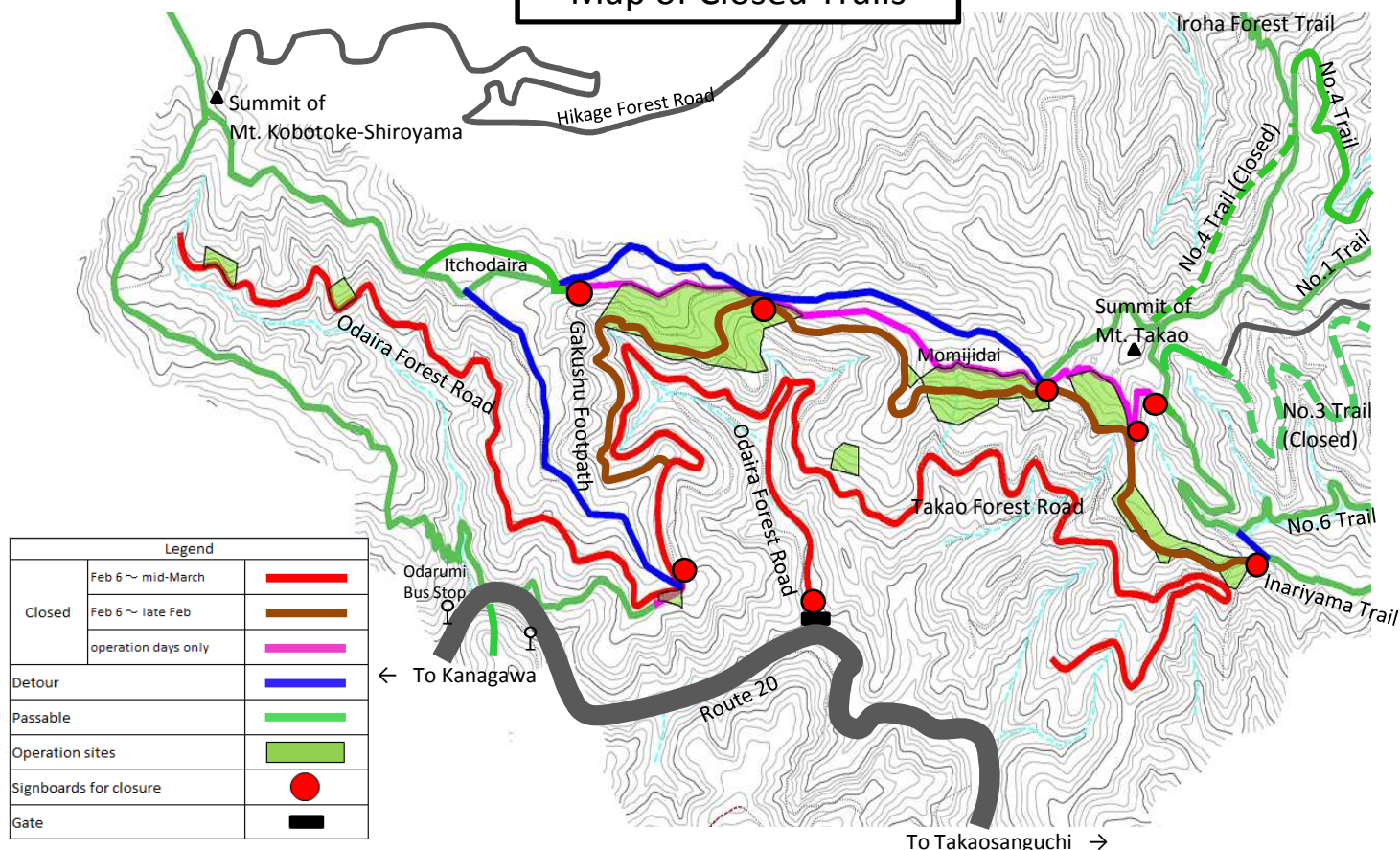
Many trees in Odaira National Forest (Mt. Takao) were damaged by Typhoon 15 which hit Eastern Japan on September 21, 2011. Logging of damaged trees is planned to secure hiker's safety and for forest conservation.

For hikers' safety, mountain trails will be partly closed and detours will be set during operations.

- |                     |   |
|---------------------|---|
| 1 . Planned work    | : Cutting and transportation of damaged trees     |
| 2 . Area            | : Odaira National Forest (Mt. Takao)              |
| 3 . Period          | : <b>From February 6, 2012 to mid-March, 2012</b> |
| 4 . Closed sections | : <b>【Inariyama Trail】</b>                        |
- (refer to the below map)
- Closed until late February (a detour to be set) **【Summit ~Itchodaira】**
  - Closed on operation days (a detour to be set) **【Gakushu Footpath】**
  - Closed until late February (a detour to be set) **【Odaira Forest Road, Takao Forest Road】**
  - Fully closed until mid-March

Thank you very much for your kind cooperation.

**Map of Closed Trails**



## Information

### Information about Forest Management:

Tokyo-kanagawa District Forest Office, Kanto Regional Forest Office,  
Forestry Agency  
TEL 050-3160-6010 FAX 0463-32-2868  
Homepage address: [http://www.rinya.maff.go.jp/kanto/tokyo\\_kanagawa/index.html](http://www.rinya.maff.go.jp/kanto/tokyo_kanagawa/index.html)

### Information about Mountain trails:

Takao Visitor Center, Tokyo Metropolitan Government  
TEL 042-664-7872