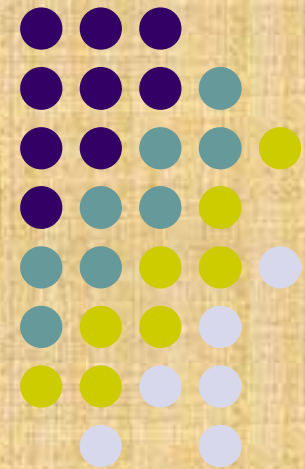


C&I for SFM: experiences and lessons from Russia

Dr. *Maria Palenova*,

ARISMF, Federal Forestry Agency, Russia



International Seminar on Challenges of Sustainable Forest Management
- integrating environmental, social and economic values of forests -
8-10 March, 2011, Tokyo, Japan

Russian forests



Total area of land under Russian forests

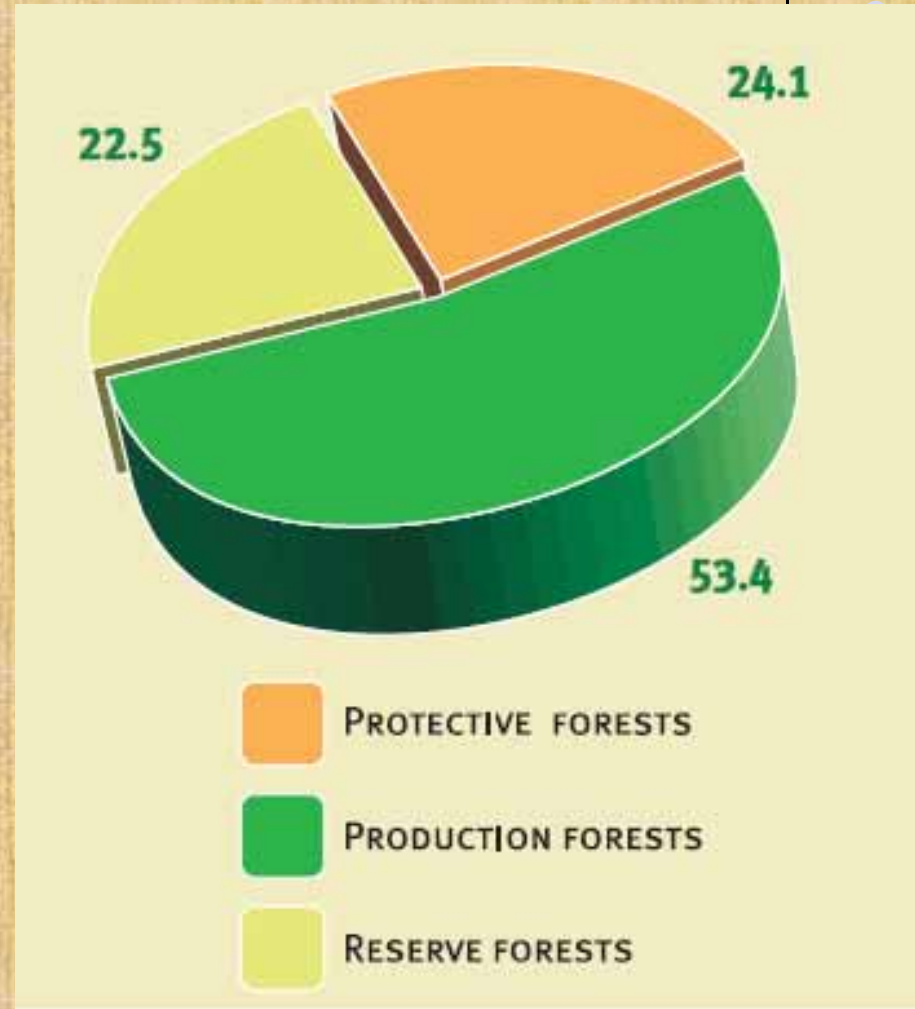
1,183.7 million ha

Total growing stock of Russian forests

83,454.07 million m³

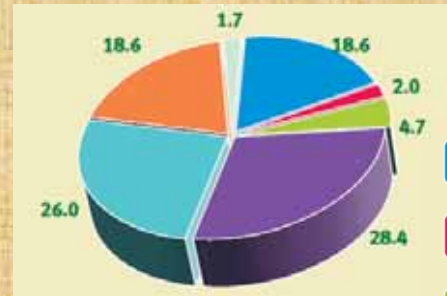
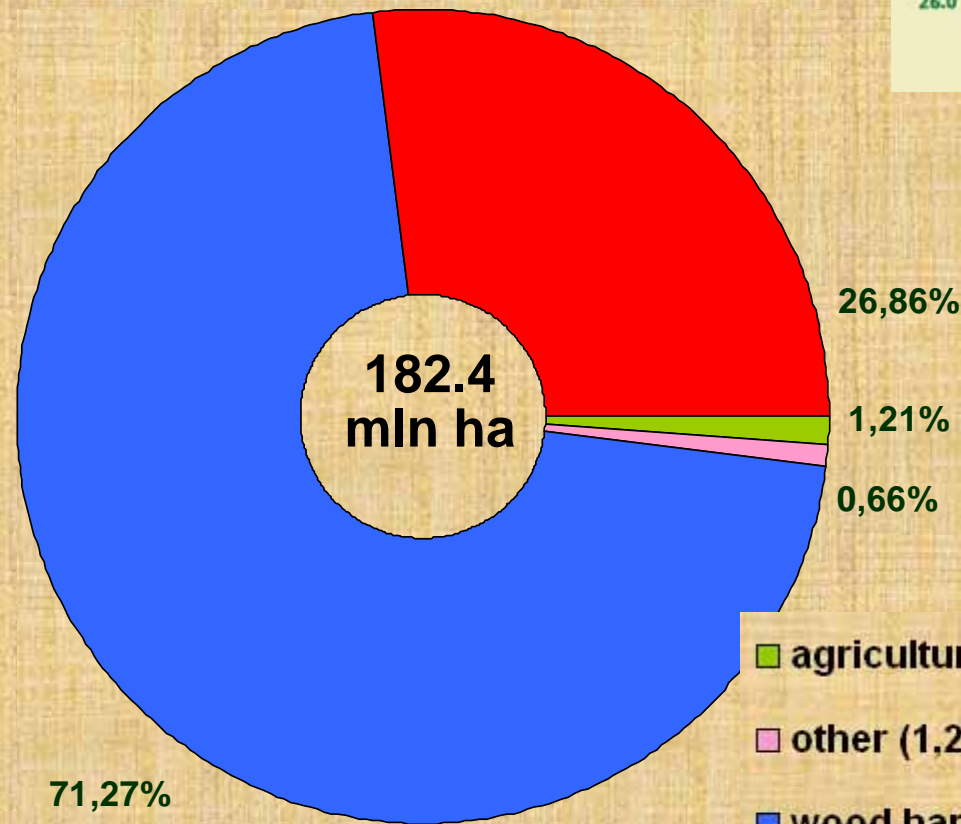
Average forest cover of Russia

46.6%



Distribution all forest area by designation - 2
protective, production, and reserve forests (%)₂

Distribution of leased forest plots according to forest management purposes (%)

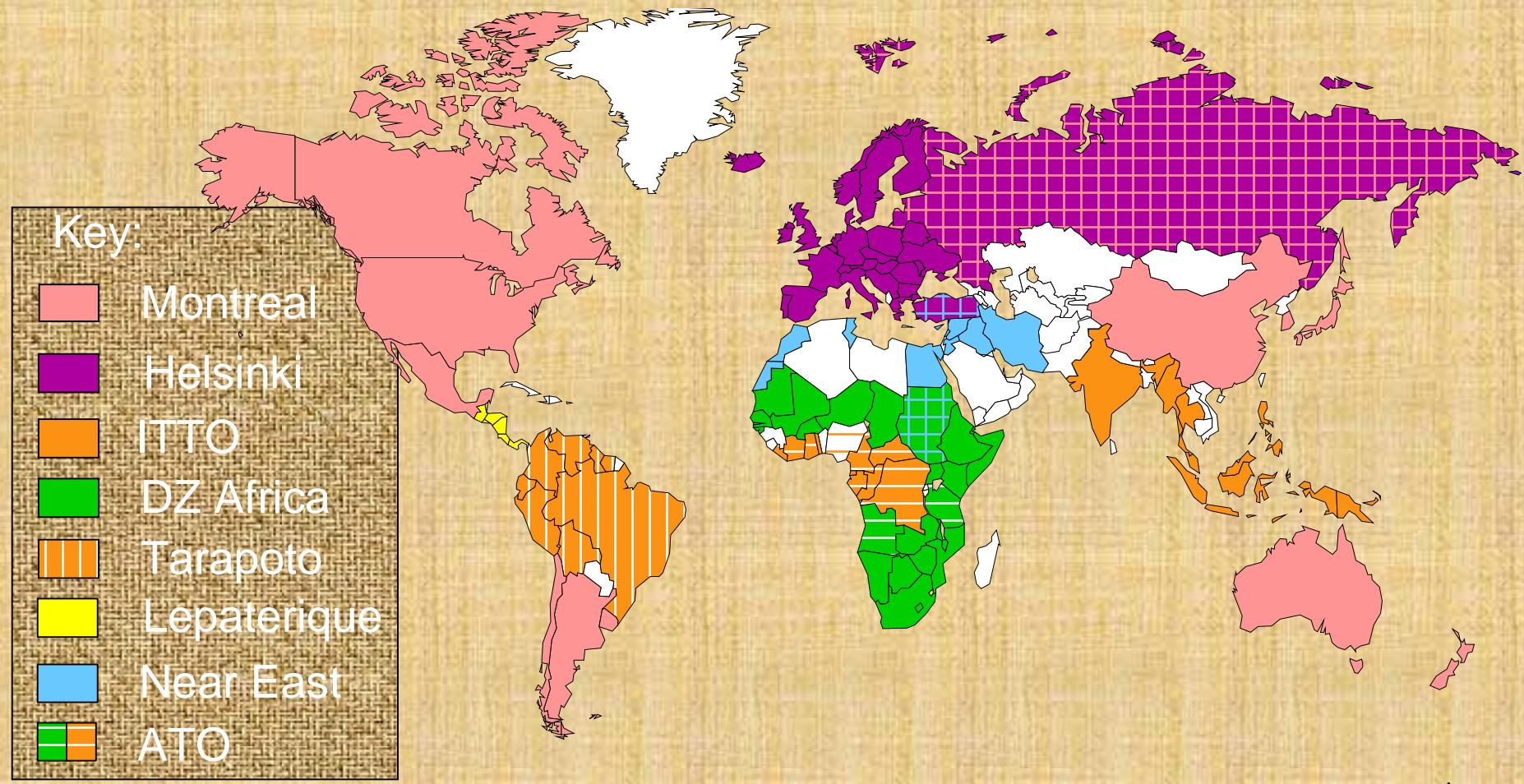


Number of lease agreements

- WOOD HARVESTING
- GAME MANAGEMENT AND HUNTING
- AGRICULTURE/FARMING
- RECREATION ACTIVITIES
- GEOLOGICAL EXPLORATION OF MINERAL RESOURCES, DEVELOPMENT OF THEIR DEPOSITS
- CONSTRUCTION, RECONSTRUCTION, AND OPERATION OF POWER TRANSMISSION LINES, COMMUNICATION LINES, ROADS, PIPELINES, AND OTHER LINEAR UTILITIES

- agricultural & farming (2,2 mln ha)
- other (1,2 mln ha)
- wood harvesting (130 mln ha)
- game management & hanting (49 mln ha)

Nations involved in intergovernmental C&I for SFM Processes



Forest Europe



Ministerial Conference on the Protection of Forests in Europe



Forest Europe: State of Europe's Forests 2011



Reporting on the pan-European Qualitative Indicators for Sustainable Forest Management and National Implementation of Commitments of the Ministerial Conference on the Protection of Forests in Europe

COUNTRY:	
Date of submission:	**/**/2010
National correspondents	
Name	
Organization	
Address	
Phone/Fax	
Email	
Other professional involved in the reporting process	
Name	
Organization	
Email	
Name	
Organization	
Email	
Name	
Organization	
Email	

Deadline for submission: 14 May 2010

Разрыв страницы

2. Reporting on National Implementation of Warsaw commitments and activities since 2007 in implementing former commitments of the Ministerial Conference on the Protection of Forests in Europe

Please report on national implementation of Warsaw commitment, and major activities since 2007 in implementing commitment from former Ministerial Conferences, if applicable. Note that responses to this part of the enquiry will be published in the next report on implementation of FOREST-EUROPE Commitment (2007-2011), together with information on pan-European implementation of Warsaw commitments and former commitments of the Ministerial Conference on the Protection of Forests in Europe.

We ask that the report on national implementation of FOREST-EUROPE commitment since 2007 be kept to a maximum of 4 pages. Please do not report on participation in international cooperative effort, but focus on implementation within your country.

National Implementation of Warsaw Declaration

Please give a description of national implementation of the commitment, including major achievement and remaining challenges.

National Implementation of Warsaw Resolution 1: Forests, Wood and Energy

Please give a description of national implementation of the commitment, including major achievement and remaining challenges.

National Implementation of Warsaw Resolution 2: Forests and Water

Please give a description of national implementation of the commitment, including major achievement and remaining challenges.

Major activities since 2007 in implementing former commitments of the Ministerial Conference on the Protection of Forests in Europe, if applicable

Please describe any major national activities since 2007 in implementing commitment from former Ministerial Conferences, if applicable. Please specify the Commitment/Ministerial Conference and Declaration/Resolution to which the activity relates.

* Note that the European Commission is asked to report on EU policy on implementation activities.

Montreal Process:

Criteria and Indicators for the Conservation and Sustainable Management of Temperate and Boreal Forests



1992	1993-94	1995	1997	2000	2001-03	2004-08	2008-09	2009-10
Rio Earth Summit	Consultation to develop C&I framework	MP C&I framework released	Capacity report on C&I	Reporting	Reporting	Consultation to refine C&I framework	Strategic Action Plan	Reporting



Seminar of experts on sustainable development of boreal and temperate forests



Santiago Declaration

7 criteria and 67 associated indicators



First approximation report



Montreal Process: Year 2000 report



MP country 1st reports and Overview Report



Québec Declaration



WG&TAC undertakes indicator review



WG develops SAP

7 criteria and 54 associated indicators



MP country 2nd reports and Overview Report

Montreal Process: Russian Reports 2003-2009

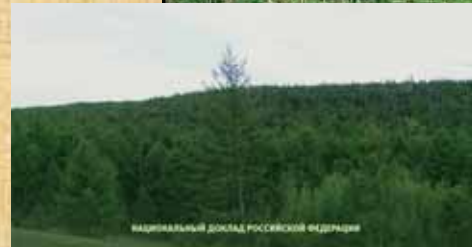


ПРОЦЕСС МОНРЕАЛЬСКОГО ПРОЦЕССА

Впервые в мире подготовлены, разработаны и выложены в открытый доступ информационные ресурсы, позволяющие любому заинтересованному лицу ознакомиться с содержанием Монреальского процесса и критериями устойчивого управления умеренными и бореальными лесами. Впервые в мире подготовлены, разработаны и выложены в открытый доступ информационные ресурсы, позволяющие любому заинтересованному лицу ознакомиться с содержанием Монреальского процесса и критериями устойчивого управления умеренными и бореальными лесами.



Впервые в мире подготовлены, разработаны и выложены в открытый доступ информационные ресурсы, позволяющие любому заинтересованному лицу ознакомиться с содержанием Монреальского процесса и критериями устойчивого управления умеренными и бореальными лесами.

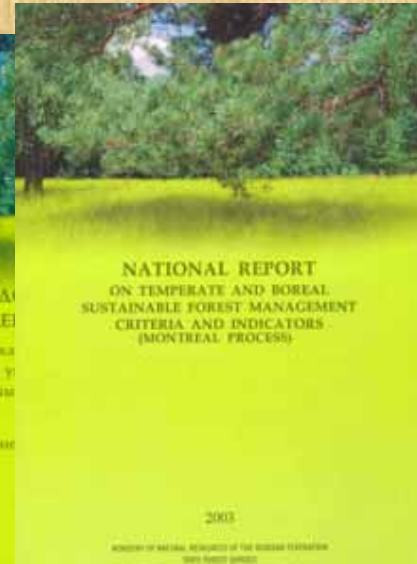


НАЦИОНАЛЬНЫЙ ДОКЛАД РОССИЙСКОЙ ФЕДЕРАЦИИ

МОНРЕАЛЬСКИЙ ПРОЦЕСС
КРИТЕРИИ И ИНДИКАТОРЫ УСТОЙЧИВОГО УПРАВЛЕНИЯ УМЕРЕННЫМИ И БОРЕАЛЬНЫМИ ЛЕСАМИ

2003

МИНИСТЕРСТВО ПРИРОДНЫХ РЕСУРСОВ И ЛЕСНОХОЗЯЙСТВЕННОГО КОМПЛЕКСА РОССИЙСКОЙ ФЕДЕРАЦИИ



МОНРЕАЛЬСКИЙ ПРОЦЕСС
КРИТЕРИИ И ИНДИКАТОРЫ УСТОЙЧИВОГО УПРАВЛЕНИЯ УМЕРЕННЫМИ И БОРЕАЛЬНЫМИ ЛЕСАМИ

2003

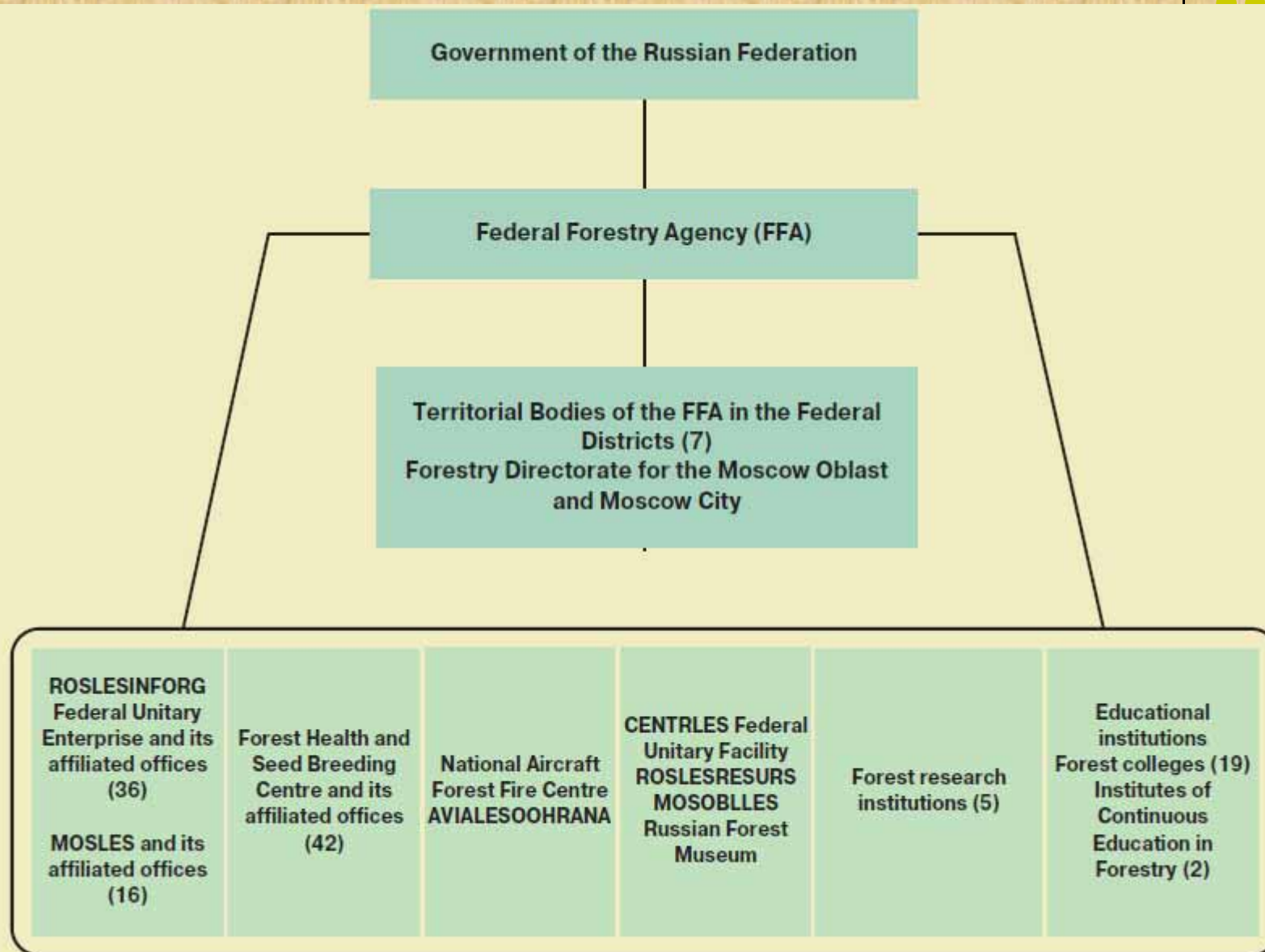
МИНИСТЕРСТВО ПРИРОДНЫХ РЕСУРСОВ И ЛЕСНОХОЗЯЙСТВЕННОГО КОМПЛЕКСА РОССИЙСКОЙ ФЕДЕРАЦИИ

МОНРЕАЛЬСКИЙ ПРОЦЕСС
по критериям и индикаторам сохранения и устойчивого управления лесами умеренной и бореальной зон

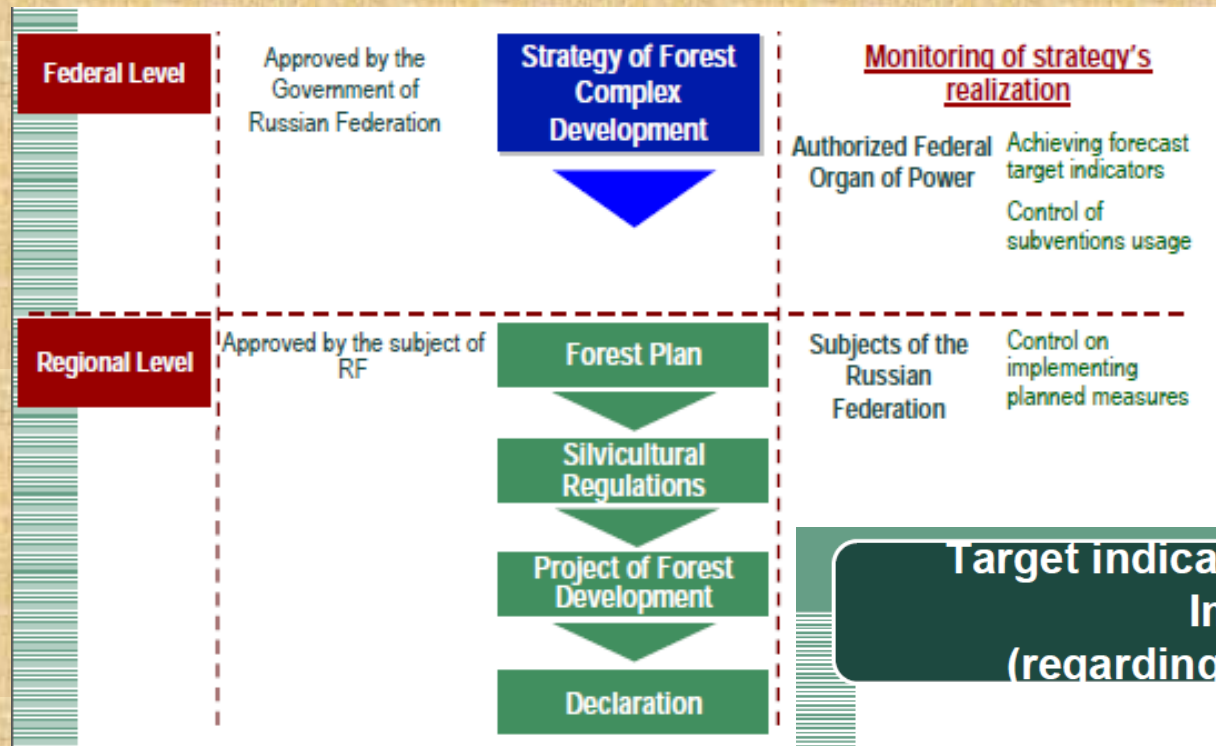
2003

МИНИСТЕРСТВО ПРИРОДНЫХ РЕСУРСОВ И ЛЕСНОХОЗЯЙСТВЕННОГО КОМПЛЕКСА РОССИЙСКОЙ ФЕДЕРАЦИИ

Institutional framework for forest management in Russia



The Russian state system of C&I for SFM



Target indicators of long-term Strategy Implementation (regarding forestry development)

Target indicators	2007	2012	2017	2020
Forests harvested, thousand ha (clear cutting)	757	810	905	1000
Forests regenerated, thousand ha	872	915	980	1040
Incl. planted areas	202	215	230	283
Forest income, billion rubles	9,9	17,9	20,9	23,0

Challenges of the Russian state system of C&I



Only a small number of indicators for

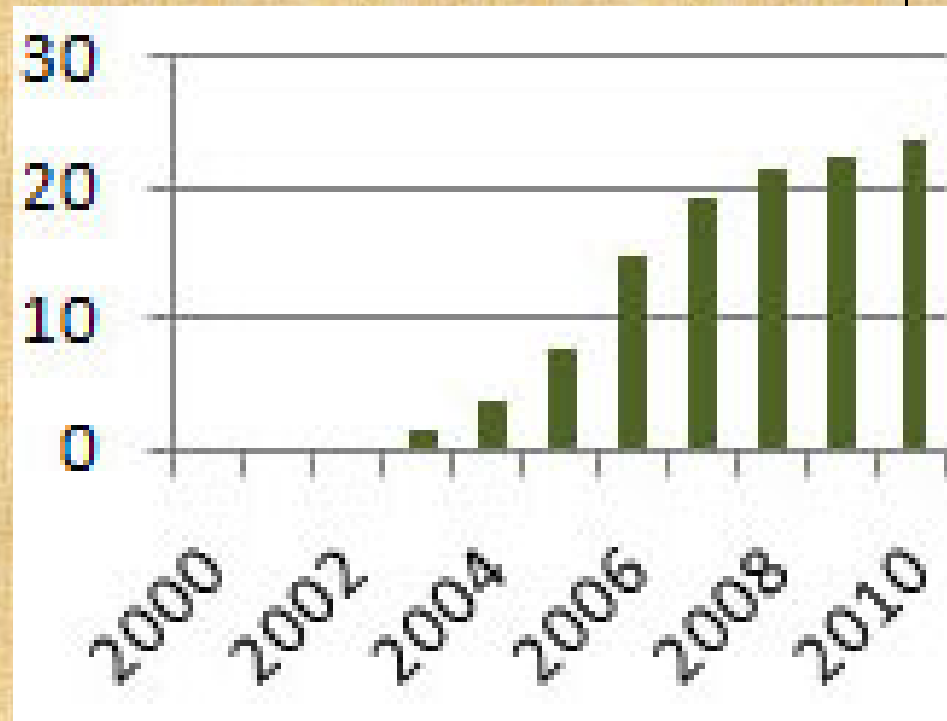
- environmental values of forests
 - conservation and maintenance of soil resources
 - conservation and maintenance of water resources
 - conservation of biological diversity
- social values of forests

Main directions of NGOs activity in Russia in which they use C&I for SFM



- Forest Certification (FSC)
- Model Forests
 - Pskov Model Forest – WWF Russia
 - Komi Model Forest – Komi Regional Non-Profit Foundation “Silver Taiga”
- Research
- Education, Information, Training

FSC in Russia – year 2011



- more than 26 million ha certified,
- 125 enterprises have FSC certificate for SFM,
- all the largest forest companies in Russia certified.¹³

Pskov Model Forest: Economical, Social and Ecological Benefits



- Stakeholder processes with Communities & Governments
- New silvicultural & operating techniques
- Training & Dissemination of Results
- FSC Certification, New Legislation
- Forest Management Integrating
- Ecological, Economic & Social Aspects
- High Conservation Value Forests, Key Biotopes

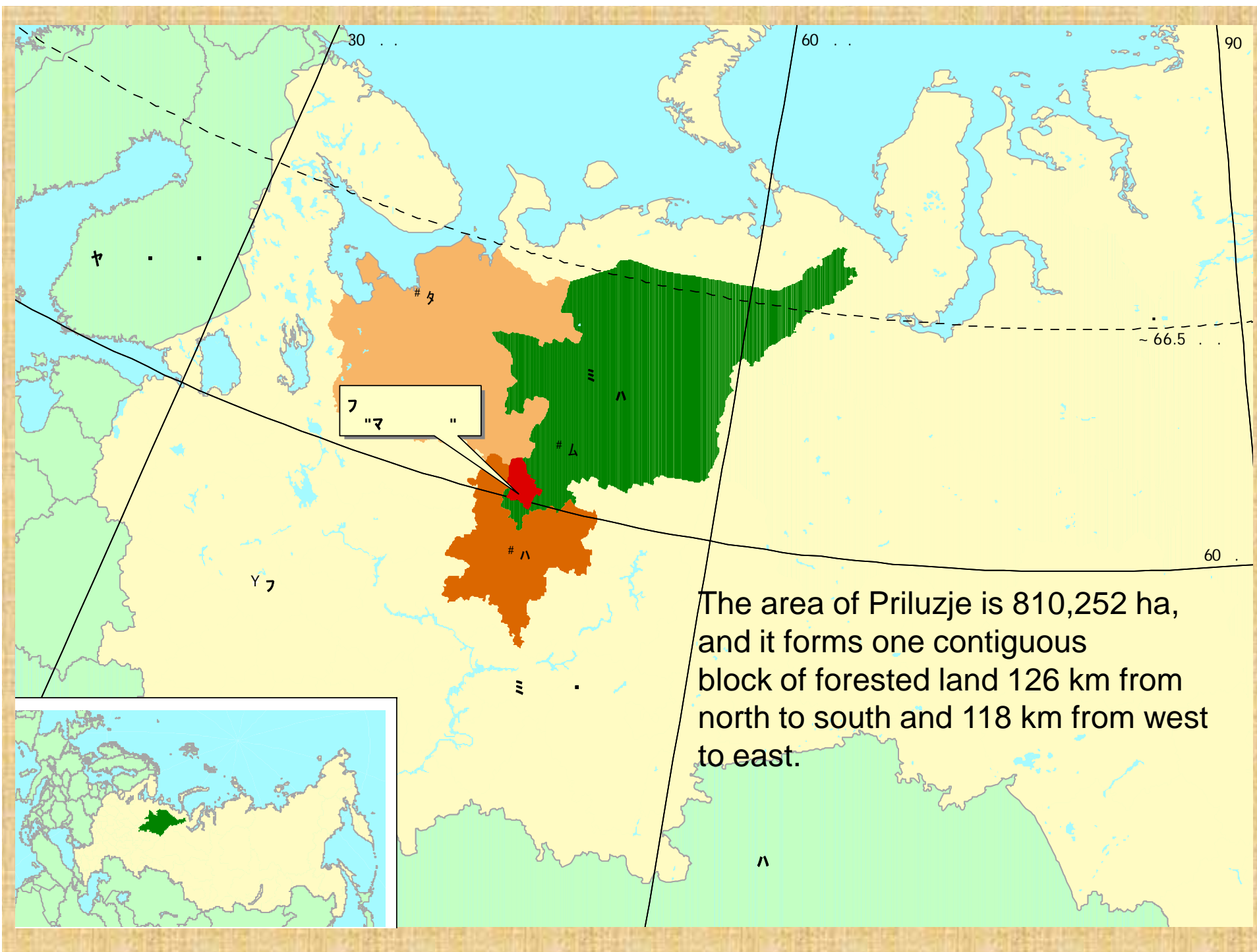


Model Forest “Priluzje” (Komi Republic): Economical, Social and Ecological Benefits



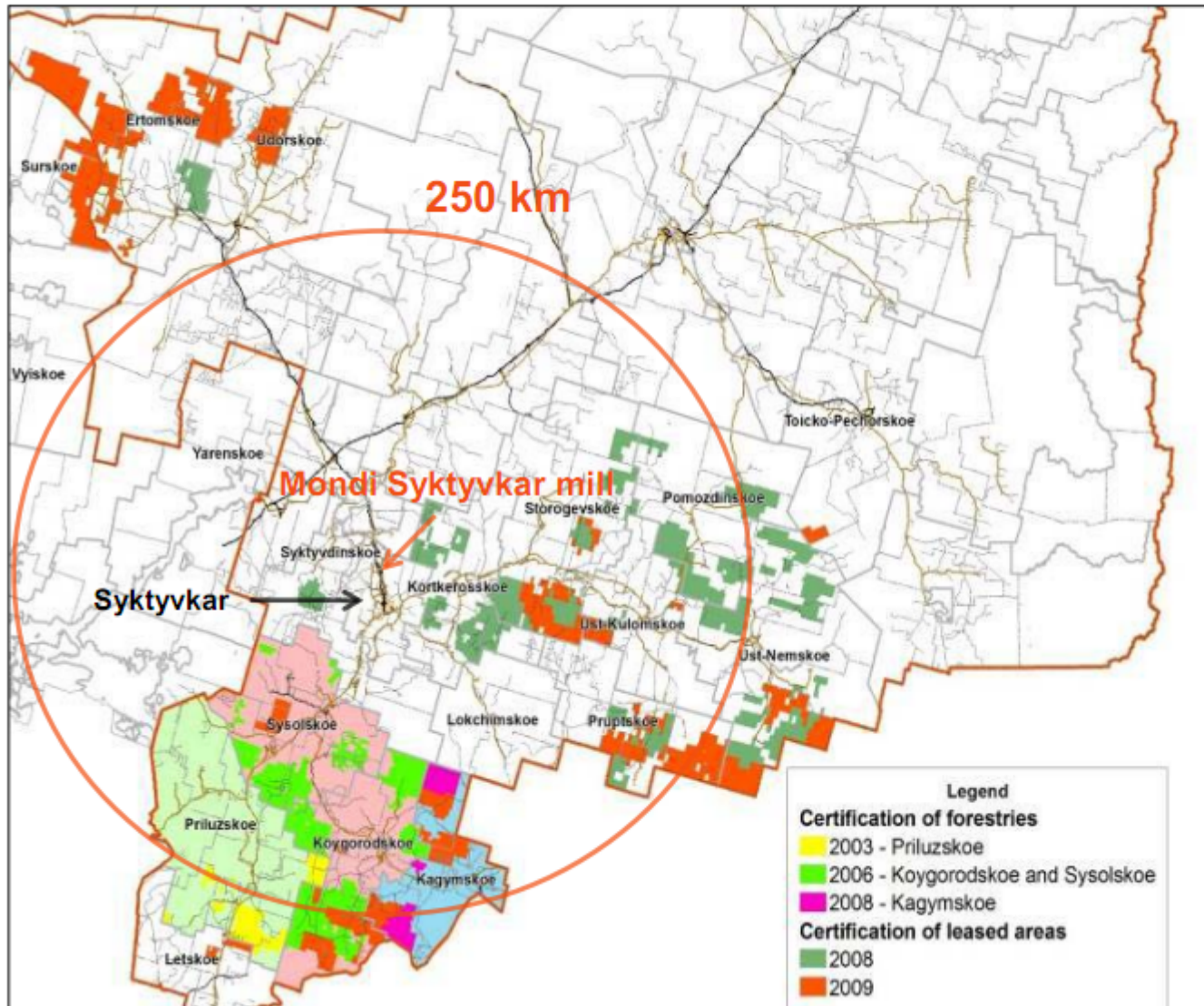
- Development of Regional Forest Policy
- Inventory and Conservation of Pristine Forests, developing of a system of biodiversity protection
- FSC certification
- Forest Economy
- Social Issues (local population)
- Information and Education





The area of Priluzje is 810,252 ha, and it forms one contiguous block of forested land 126 km from north to south and 118 km from west to east.

Komi wood market



Area of **2.1 m ha** with twenty-six lease agreements. Total standing wood of **200 m m³**.

Total allowable cut of **5.1 m m³** per annum with total cut of **3 m m³** in 2009. 100% pulp wood supply ensured.

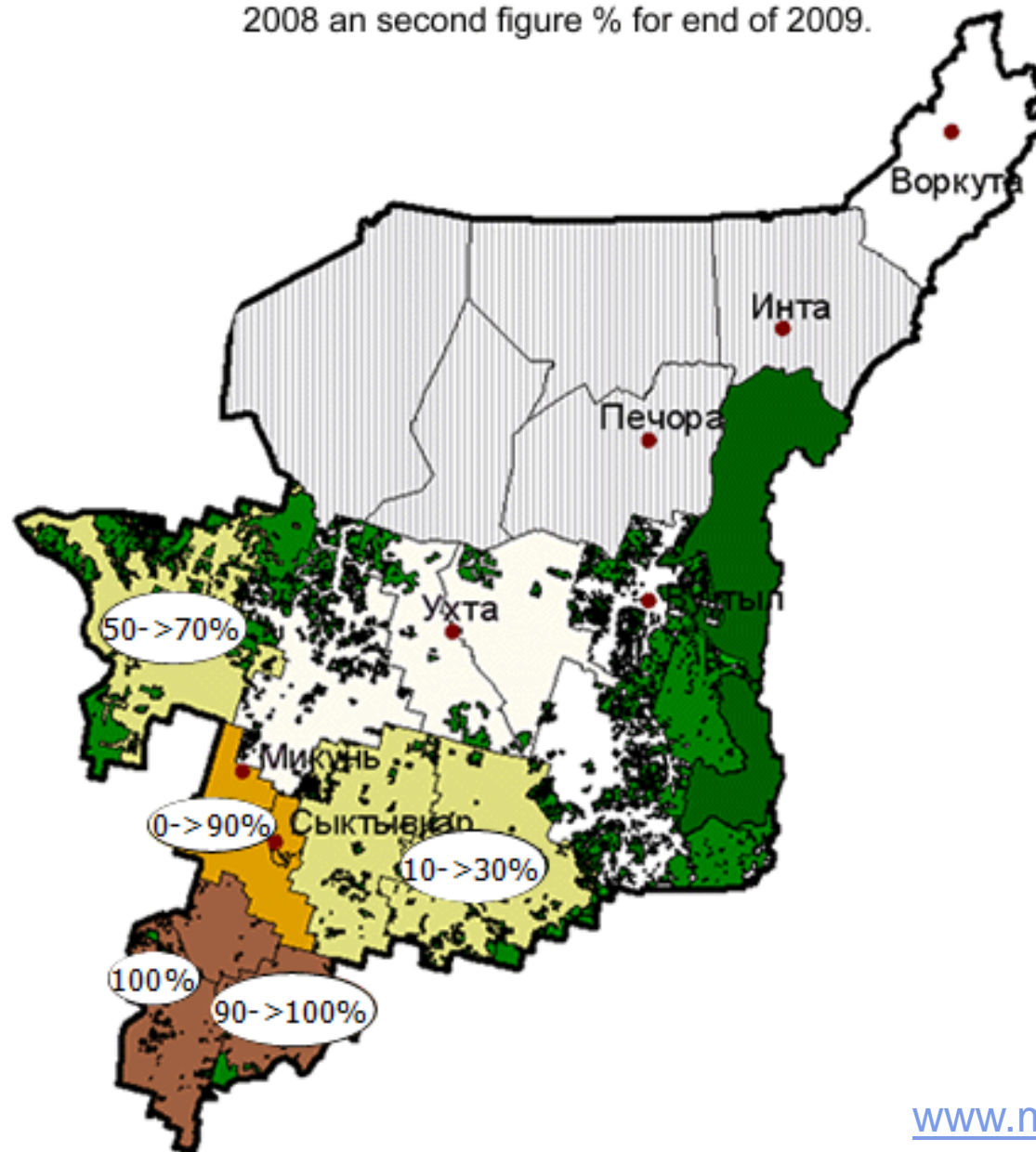
Optimal mixture of hard and soft wood inventory.

Lease period up to 49 years.

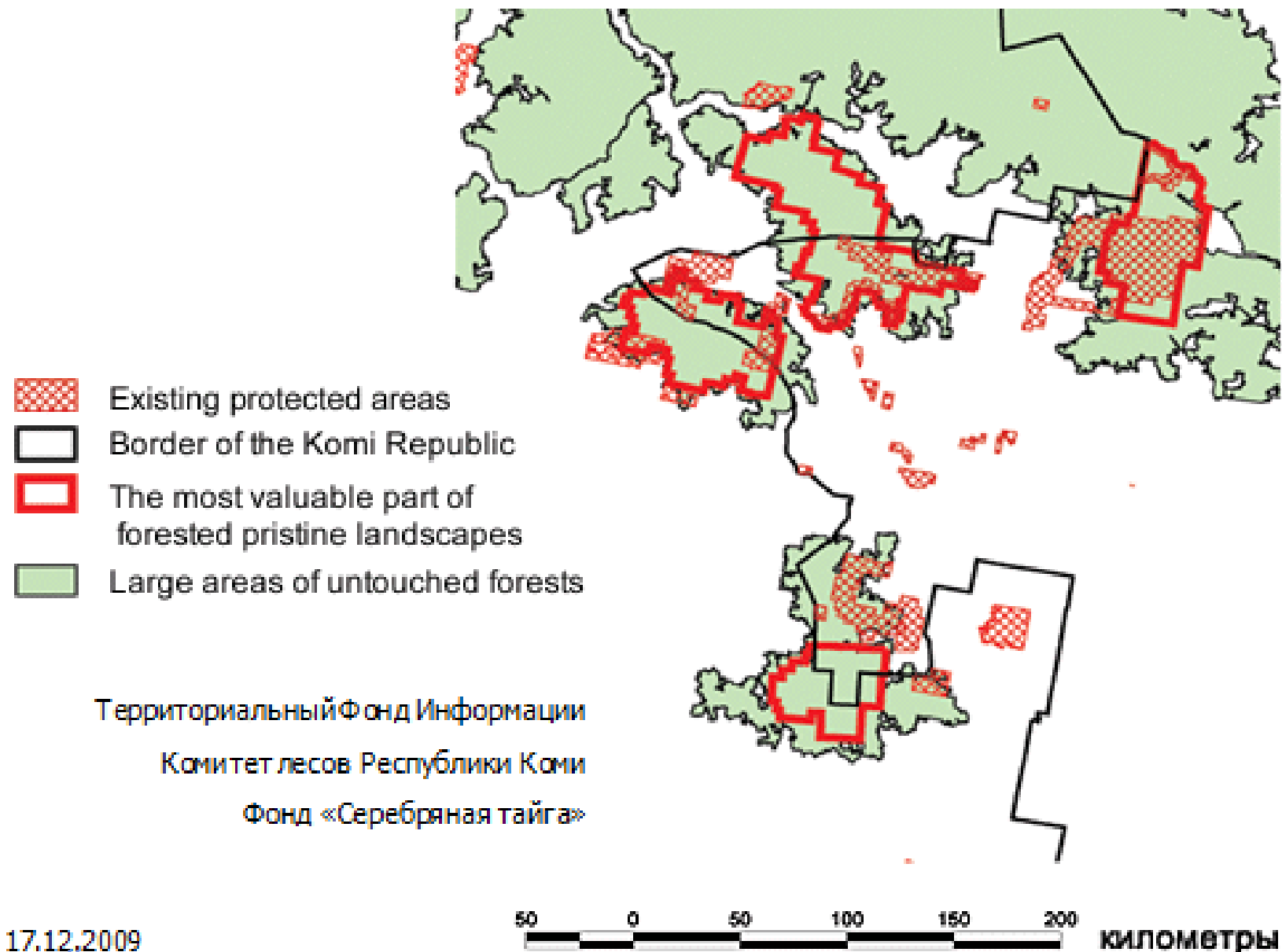
7 logging areas.

High Conservation Value Forests. Progress of solution for pristine forests in the Komi Republic in 2009.

First figure in the circle present % of the solution in the end of 2008 an second figure % for end of 2009.



Proposals of protection of pristine landscapes developed together with WWF for the Komi Republic and Arkhangelsk oblast.



17.12.2009

Conclusions and recommendations



Important future actors advancing SFM

- for Education, Information, Training:
 - internet based communication tools of C&I for SFM
- for policy makers:
 - analytical assessment tools of C&I for SFM



Thank You for Your Attention!

