



Week of International Workshop and Seminar on Forest-based Reporting

3 - 7 December 2012, Tokyo, Japan



Reporting on Forests and Forest Management
in the ECE-FAO region – a story about collaboration

Roman Michalak, ECE-FAO Forestry and Timber Section Geneva



Scope of presentation

- ECE-FAO Forestry and Timber
- Status and Trends
- ECE-FAO work on forest resources assessment
- Participation in the Collaborative Reporting



3 - 7 December 2012, Tokyo, Japan



ECE-FAO Forestry and Timber



3 - 7 December 2012, Tokyo, Japan



**United Nations
Economic Commission for
Europe**



**Food and Agriculture Organization
of the United Nations**



1947

**Timber Committee
UN Economic Commission for Europe
+
European Forestry Commission
Food and Agriculture Organization UN**

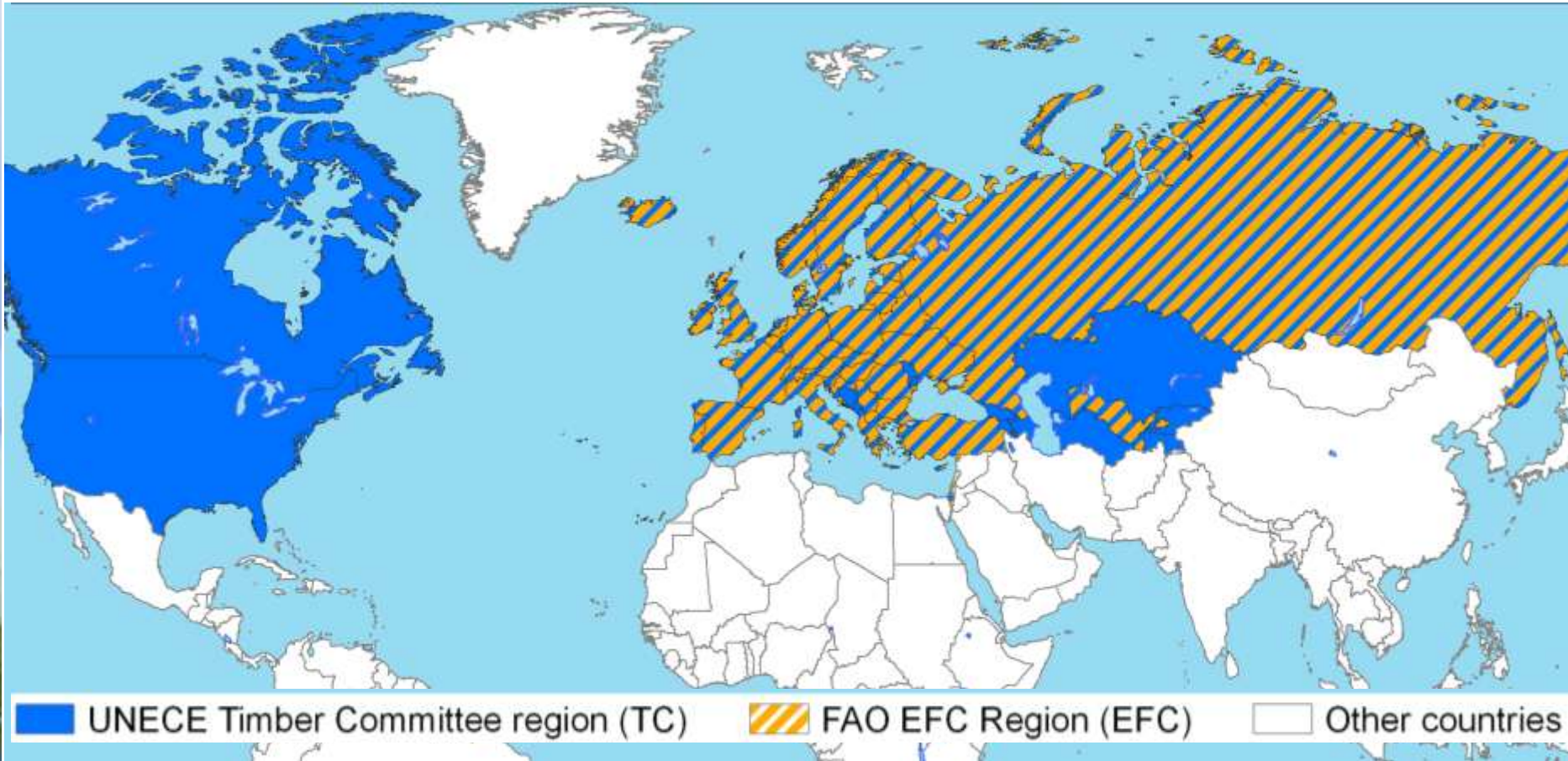
ECE-FAO Forestry and Timber Section Geneva



3 - 7 December 2012, Tokyo, Japan



ECE Timber Committee FAO European Forestry Commission



3 - 7 December 2012, Tokyo, Japan

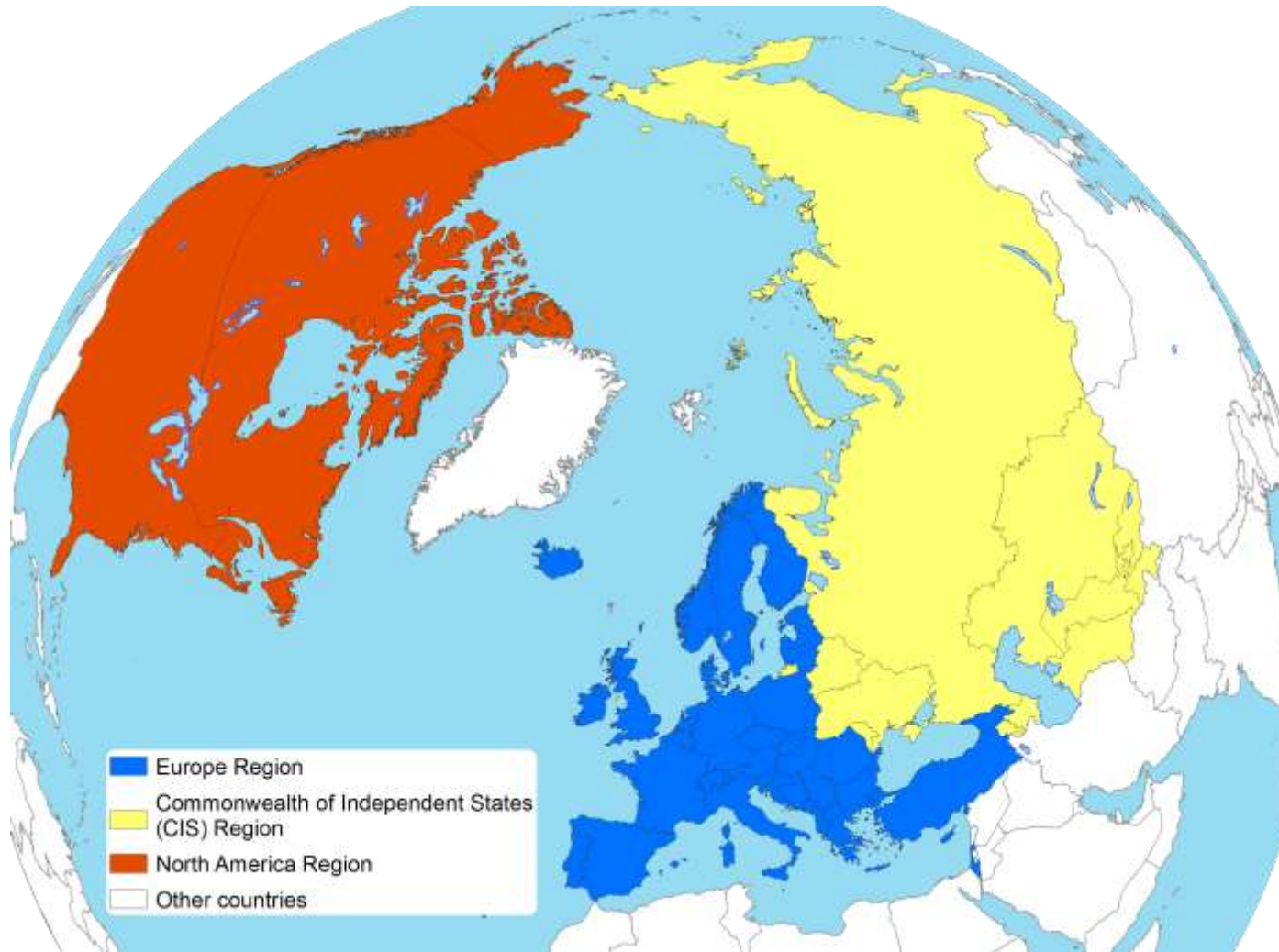


Main Products of the ECE-FAO Geneva

- **Data**
 - Forests (global, pan-European)
 - Products (JFSQ)
 - Energy (JWEE)
- **Analysis**
 - Forest assessment
 - Forest products markets
 - Outlook studies
- **Policy/Management Advice**
 - Guidelines
 - Debates, Briefs
 - National Forest Policy Dialogues



Status and Trends



3 - 7 December 2012, Tokyo, Japan



Forests in the ECE-FAO Region



1.6 BLN HA

40% WORLD'S FORESTS



Source: FAO FRA 2010

3 - 7 December 2012, Tokyo, Japan



Growing stock per hectare

NA – 130 m³/ha

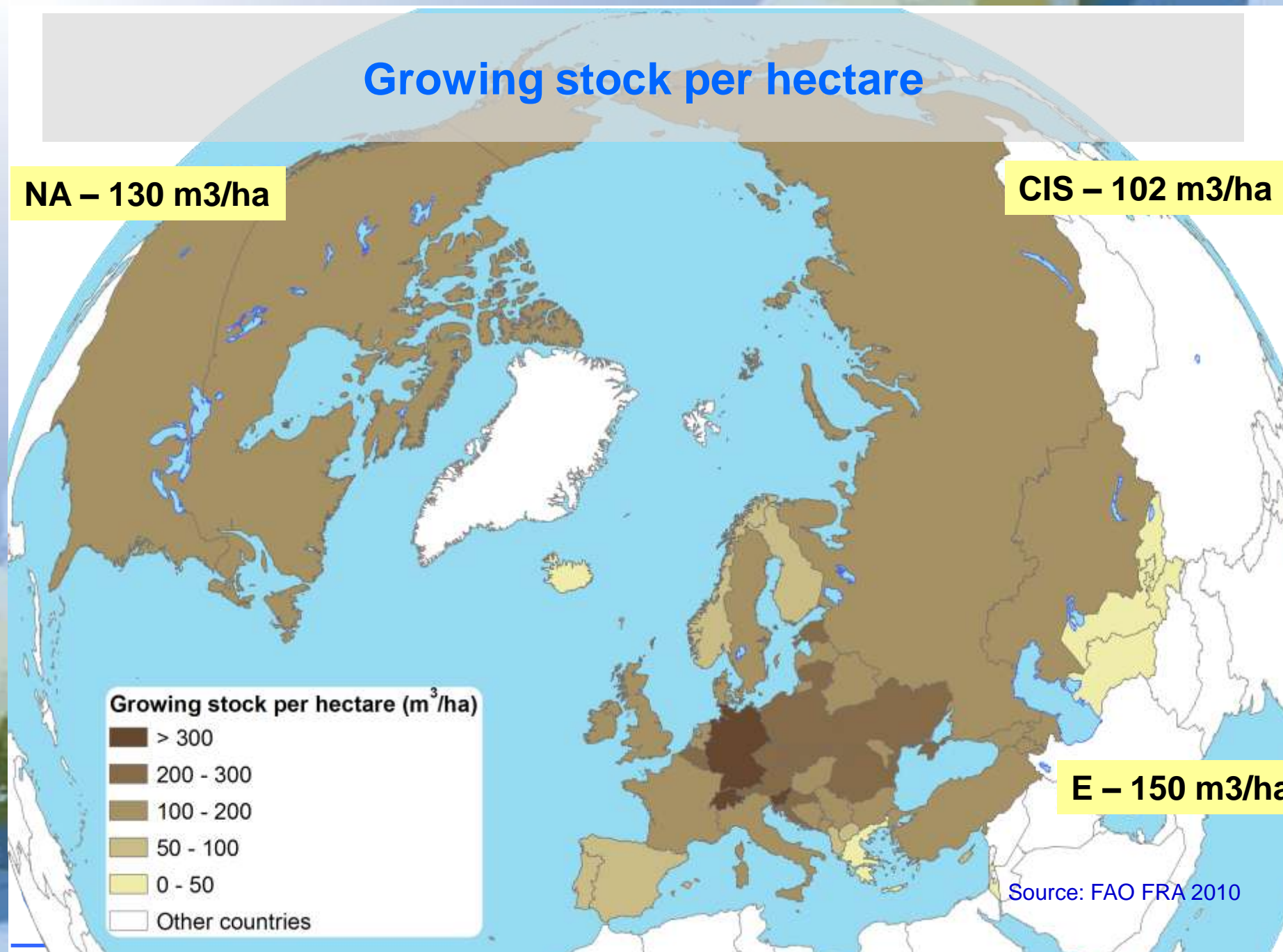
CIS – 102 m³/ha

E – 150 m³/ha

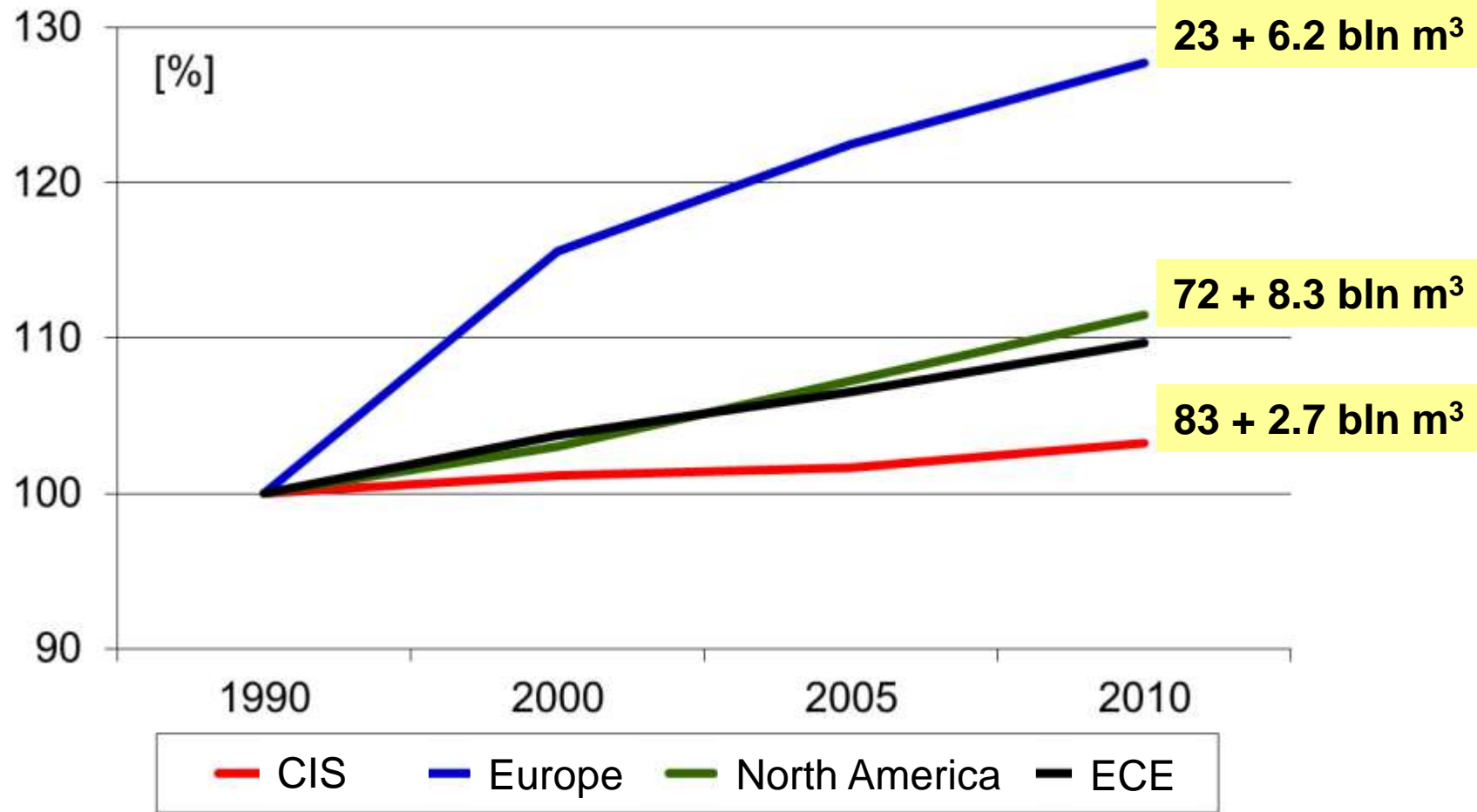
Growing stock per hectare (m³/ha)

- > 300
- 200 - 300
- 100 - 200
- 50 - 100
- 0 - 50
- Other countries

Source: FAO FRA 2010



Change of Growing Stock

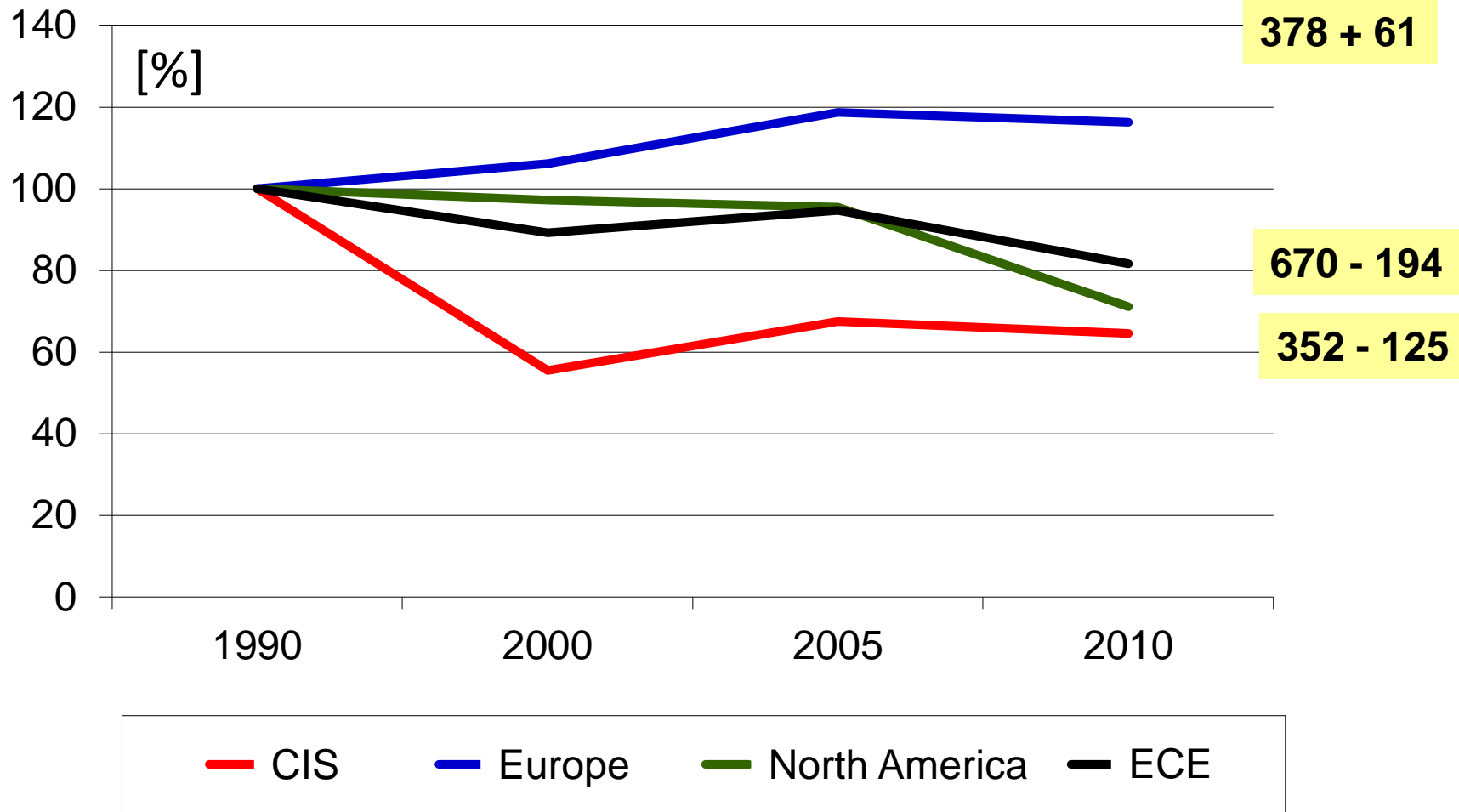


Source : FAO FRA 2010

3 - 7 December 2012, Tokyo, Japan



Change of Removals - periodical

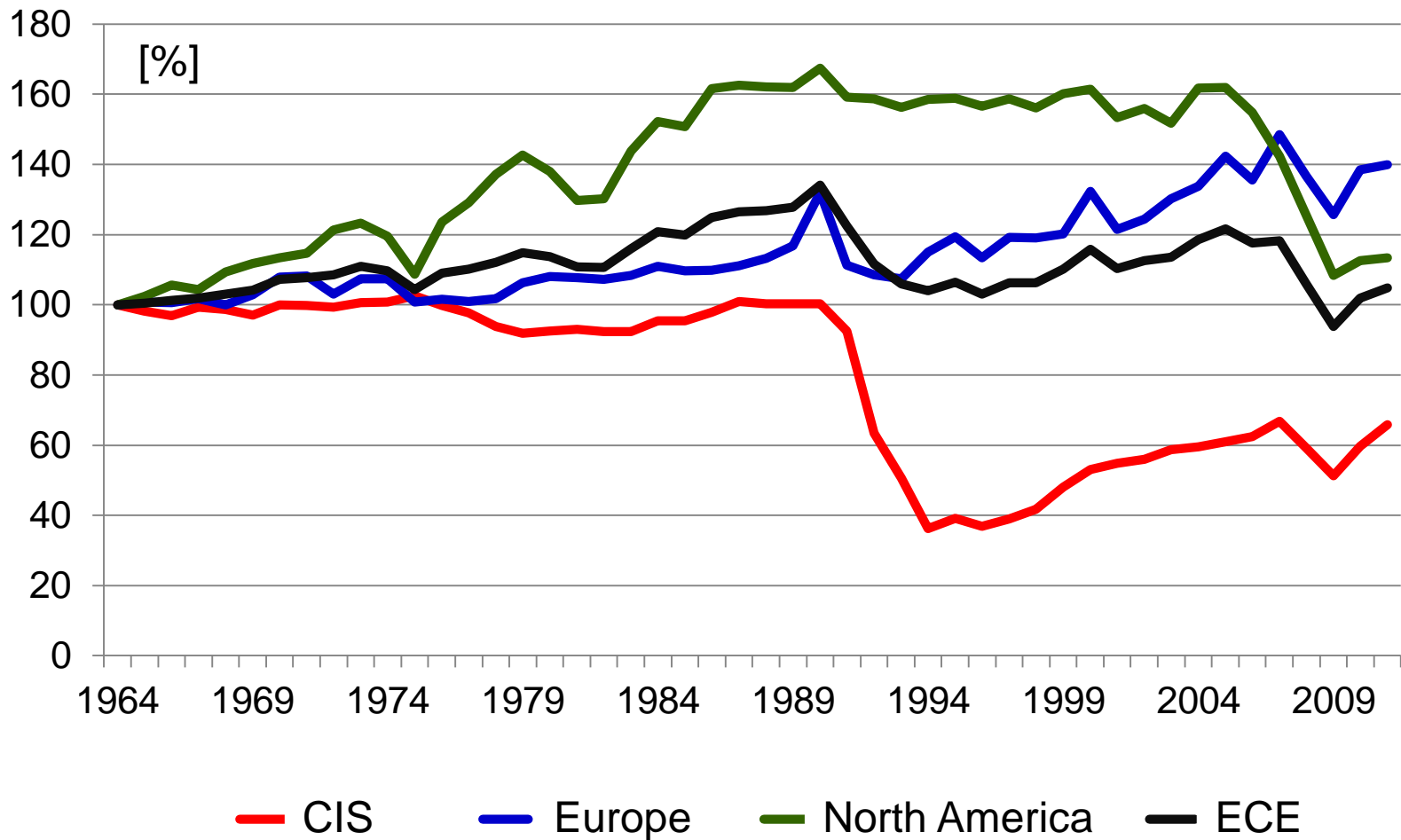


Source : UNECE/FAO 2010

3 - 7 December 2012, Tokyo, Japan



Change of removals - annual

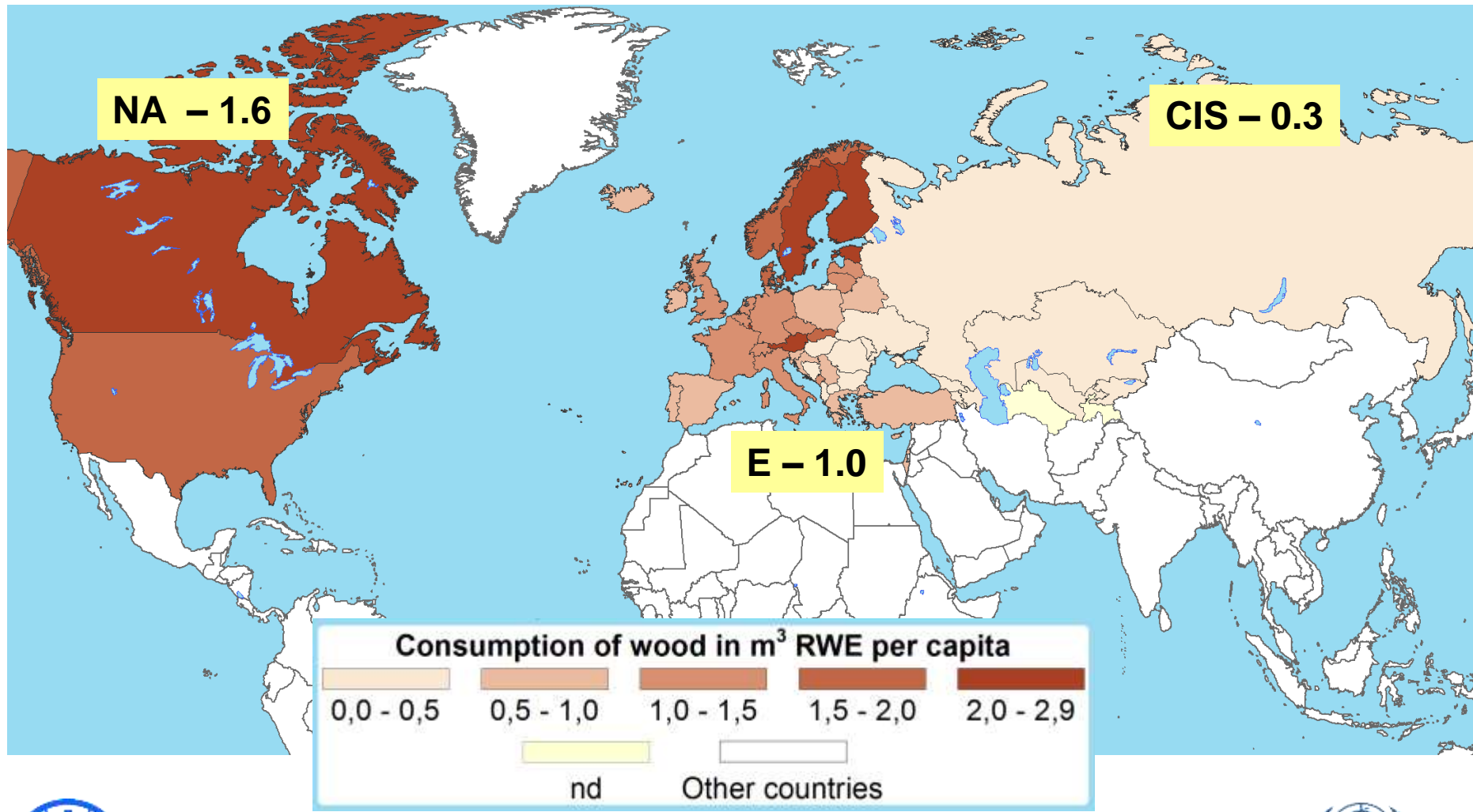


Source : UNECE/FAO 2010

3 - 7 December 2012, Tokyo, Japan



Wood consumption



Source: UNECE/FAO 2010

3 - 7 December 2012, Tokyo, Japan



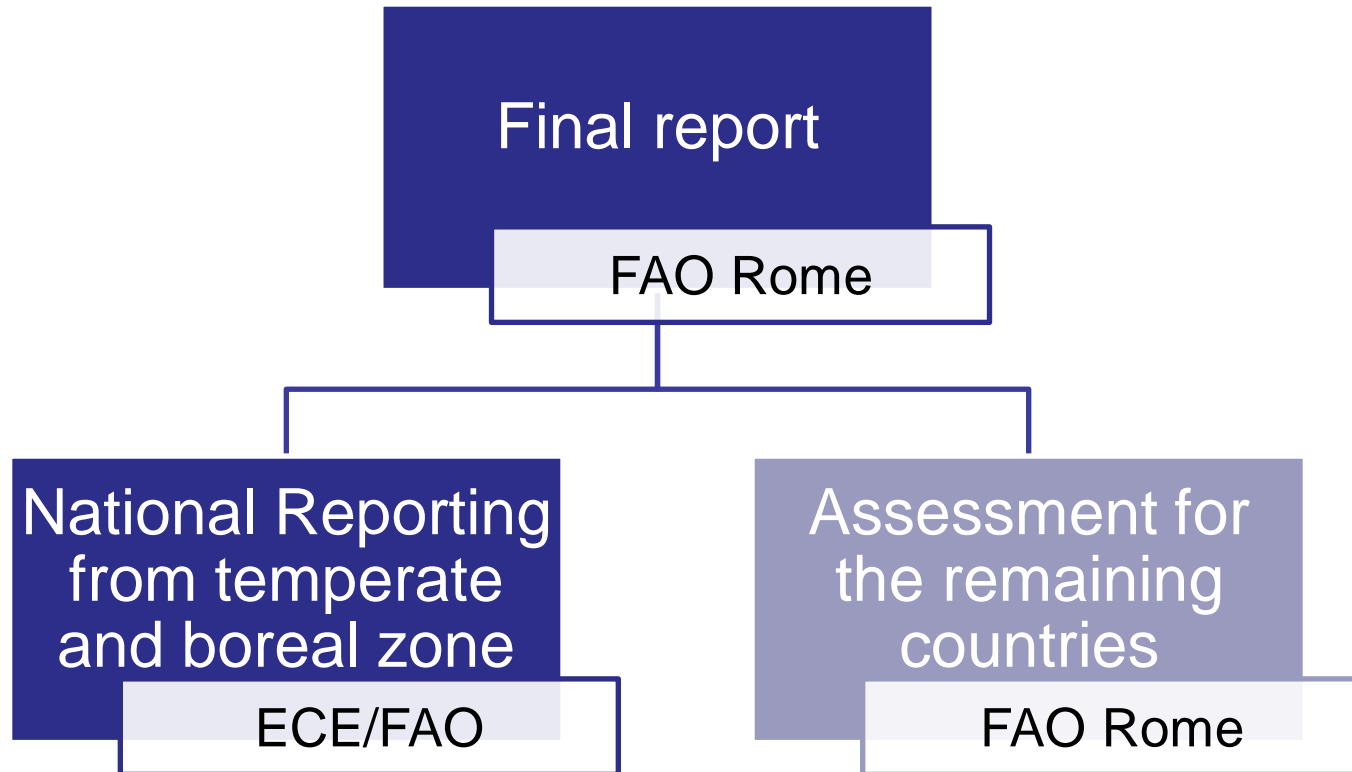
ECE-FAO work on forest resources assessment



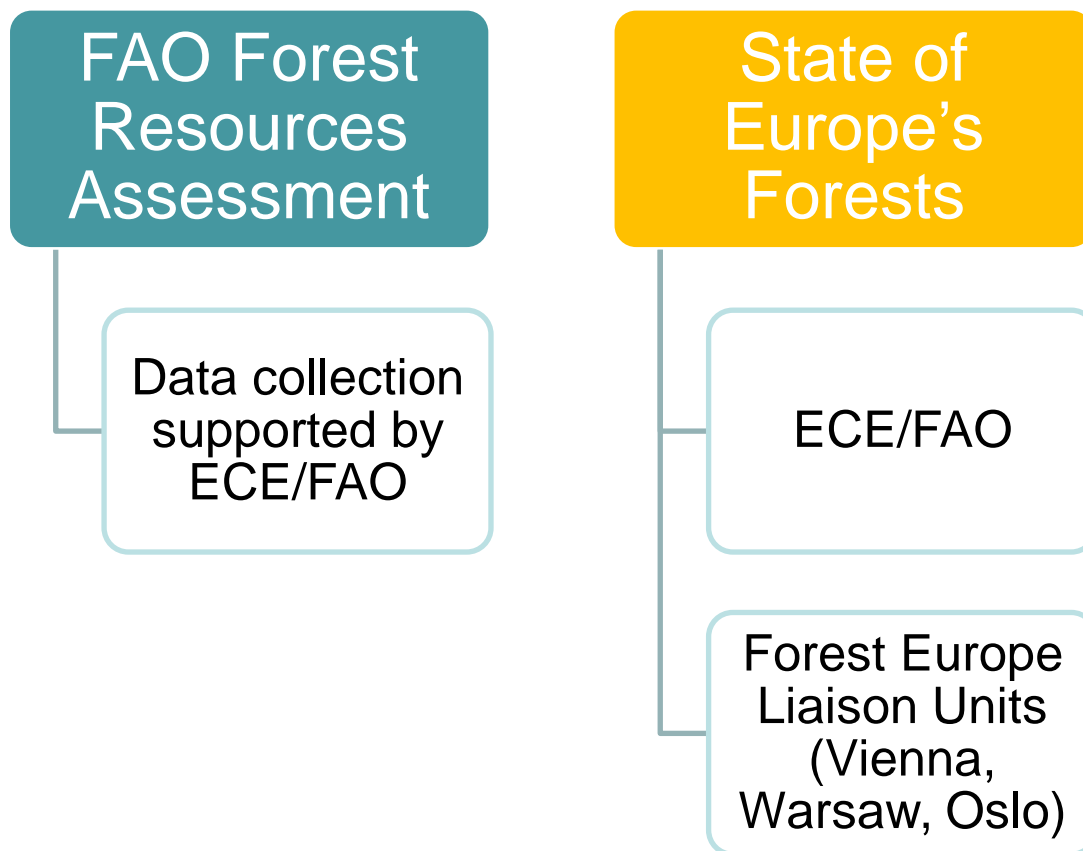
3 - 7 December 2012, Tokyo, Japan



FRA Until 2000



2000 - 2010



Participation in the Collaborative Reporting



3 - 7 December 2012, Tokyo, Japan



Forest Resources Assessment 2015 (global perspective)



Global (Collaborative)
Report

Collaborative
Forest Resources
Questionnaire

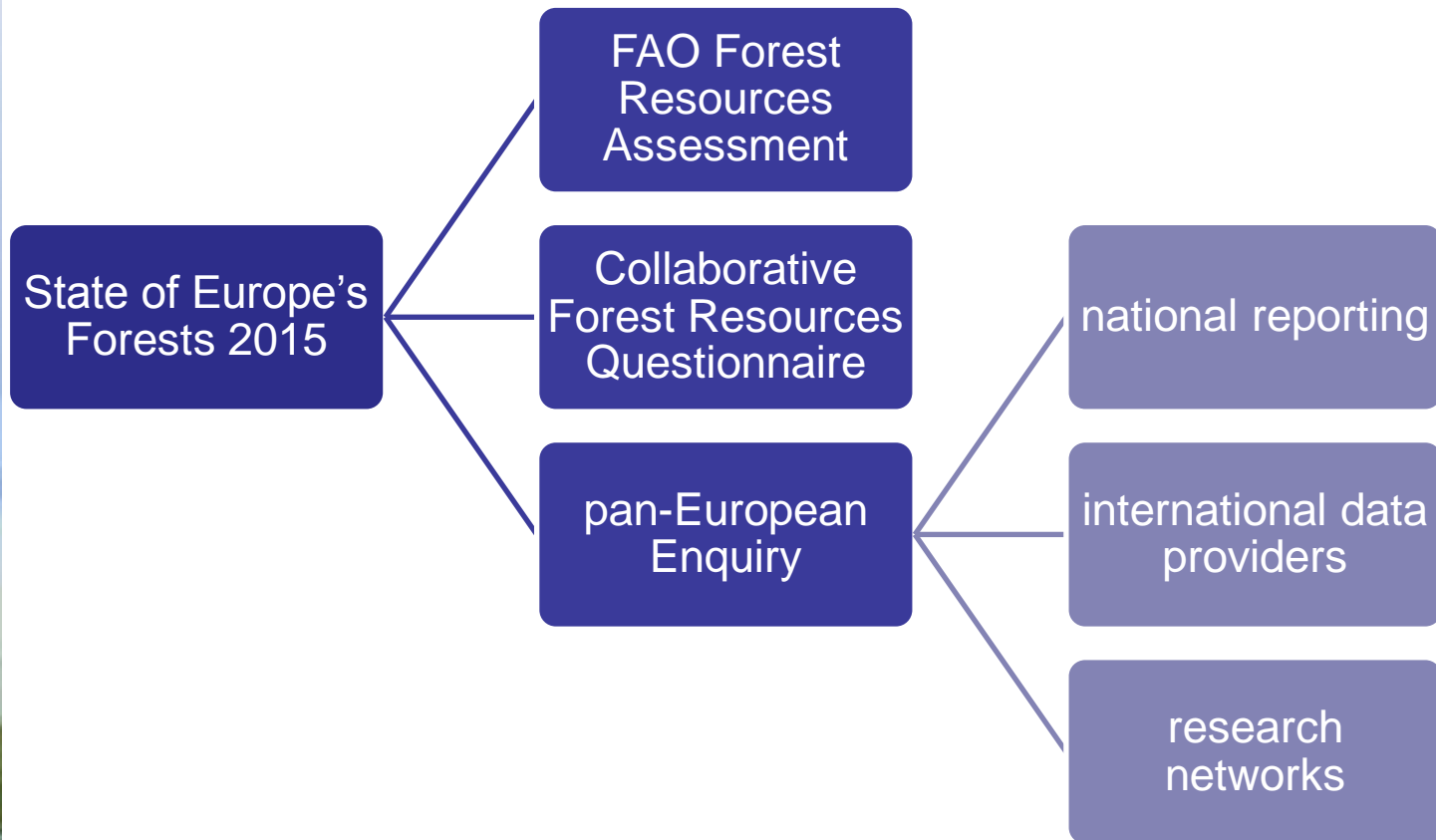
FAO Forest
Resources
Assessment



3 - 7 December 2012, Tokyo, Japan



Forest Resources Assessment 2015 (regional perspective)



3 - 7 December 2012, Tokyo, Japan



Work of the ECE-Team of Specialists on Monitoring SFM

Global Process:

- Review of the global enquiries

Regional Process:

- Three thematic groups:
 - Assessment of the SFM
 - Socio-Economic Indicators
 - Availability for wood supply and Fellings/Increment
- Formats and definitions for all indicators will be reviewed and developed, with the involvement of authors and the whole Team
- Regional enquiry will be complementary to the global one



Schedule of the reporting on quantitative indicators, coordinated with the CFRQ

- Release of the global Enquiries - January 2013
 - ToS meeting in February 2013
 - Advanced draft Enquiry with the wide range of stakeholders – April 2013
- Global Meeting of National Correspondents – May 2013
 - Release of pan-European Enquiry – June 2013
 - Joint ToS and National Correspondents workshop(s) – September 2013
- Deadline for reporting – end of 2013
 - Data collection from IDPs and Research in 2014





More information:

<http://www.fao.org/forestry/fra/fra2010/en/>

<http://www.unece.org/forests/fr/outputs/soef2011.html>

roman.michalak@unece.org



3 - 7 December 2012, Tokyo, Japan

