

**Coastal Forests Restoration & Reforestation through Collaboration Among NGOs**

Feb. 5, 2012

Dr. Kunihiro SEIDO  
OISCA Japan

### What is OISCA?

KEY message: Promoting sustainable “FURUSATO” (home community) development through capacity building, organic farming, environment preservation and biodiversity conservation. Activity started in 1961, mainly in Asia-Pacific region, today covering 29 countries worldwide.



Mindanao, Philippines  
Eco-tec. Training Center



Bangladesh  
Mangrove reforestation project

### Agriculture requires Forests!

March 2011

Reforestation Project	Forest	Mangrove	Total Area
General Forest	5,659ha	5,839ha	11,498ha
CFP	3,875ha	30ha	3,905ha
Total	9,534ha	5,869ha	15,403ha



Children Forest Program  
(Thailand)



Mangrove Project  
298ha(2003~2011) (Indonesia)

### 1. Mt. Fuji Reforestation through Collaboration System



Reforestation to restore the forest of 100ha, damaged by harmful insects

### 2. Coastal Forests Restoration in Miyagi-ken.



Production of healthy seedlings to restore coastal forests that were damaged by unprecedented grand scale tsunami.

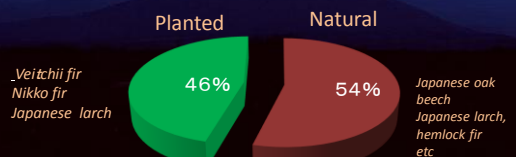
### 1. Mt. Fuji Reforestation through Collaboration System

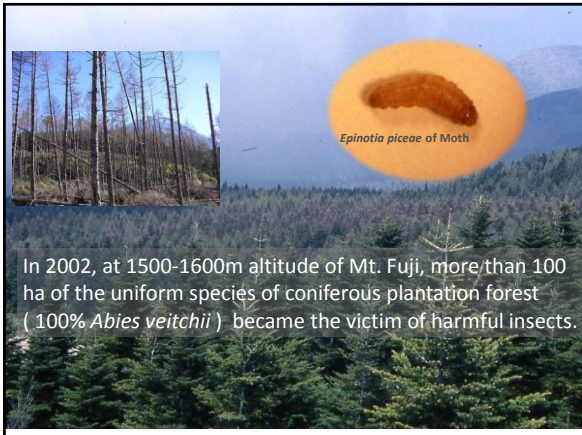
Reforestation to restore the forest of 100ha, damaged by harmful insects



### Mt. Fuji, the eternal symbol of Japanese

#### Forests now





### How to plant?

**Organized Field Survey** by Yamanashi For.Res.Inst. Tokyo Univ of Agri & Fuji Res,Inst of For.Man.Tec.

Found 38 tree species. **Selected 5 species** based on seed collection & seedling production. **Planting Space:** At random like a natural habitation

“**Wood Guard**” to protect trees from deer browsing.

*Fagus crenata*

*Quercus crispula*

*Acer micranthum*

*Alnus hirsuta*

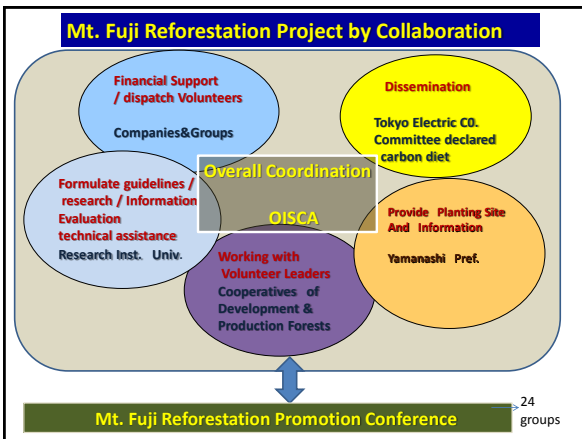
*Cerasus jamazakura*

Wood Guard

### Participating Companies & Groups

- Isuzu Motors Limited
- ORBIS Inc.
- Pdc,inc.
- KDDI CORPORATION.
- Showa Shell Sekiyu K.K.
- Suzuken Kogyo co., Ltd.
- TOYOTA Tsusho Corporation
- Nikon Corporation
- Japan Reinsurance Federation of Consumer 's Cooperatives
- JAPAN Railway Trade Unions Confederation
- Sinano Chemical Inc.
- Fujikyū Travel Co.
- Tokyo University of Agriculture
- Fuji Forest Technology Research Institute
- Yamanashi Forest research Institute

- Yamanashi Forest& Environment Department
- Yamanashi Prefecture Federation of Forest Management & Forest Products
- Yamanashi Forestry Group Council
- Yamanashi Forest Management Bureau Office ,Forestry Agency
- Fuji&Narusawa Imperial Property Protection Association
- Narusawa Mura
- The Tokyo Electric Power Company Incorporated (TEPCO)
- NGO OISCA Japan



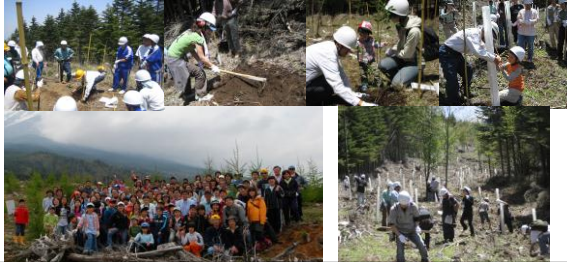
### OISCA introduced a Collaboration system

**Objective:**

- To promote faster reforestation than natural regeneration
- To establish a unified form of forest plantation
- To restore the natural landscape of Mt. Fuji and accelerate growth of trees
- To promote a better understanding on forests and forestry
- To encourage forest workers and boost the local economy
- To implement locally adaptive management.

## Planting Results 2007~2011

Participants : some 5,000 people  
 Plantation Area : 38ha  
 Planted trees : some 40,000 trees

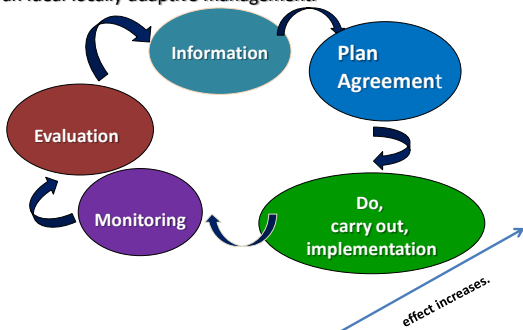


## Field Study, Exchange Gatherings, Environmental Education, Public Information of Achievements



## Adaptive Management

Mt. Fuji reforestation project through collaboration system is an ideal locally adaptive management.



## Advantage of Reforestation through collaboration

Company Administration Researcher NGO

- With more people involved in this project, understanding on collective activity advanced, appreciation to forests enhanced, and solution of problems eased.
- With the people of different sectors working together, each sector was able to exercise its advantageous role to mitigate the problems and improve the situation.
- With groups having different goals and missions working together, spirit of cooperation emerged, common needs shared and harmonious work ethics developed.

## 2. Coastal Forests Restoration in Miyagi-ken

Action plan to produce seedlings to restore coastal forests that were damaged by unprecedented tsunami



-On 17 March 2011, OISCA submitted a paper to the Director-General of Forestry Agency advocating an urgent need of cooperation among agencies and organizations to restore coastal forests that were crucially damaged by tsunami on 11 March.

-On 4 April 2011, the first meeting of the Director-General of Forestry Agency and Chairman of OISCA Japan took place.

Kitakama District in front of Sendai Airport

**East Japan Earthquake and Tsunami on 11 March 2011**  
 "OISCA must take up the task of restoring the coastal forests as top priority and most urgent issue of action"



- Won useful advices of Dr. Takehiko Ohta at the tsunami-affected coastal forest site
- Repeatedly consulted with members of the Association for Earthquake Disaster Restoration in East Natori City.
- Repeatedly exchanged information with Tohoku Regional Forestry Office, Miyagi-ken Office and Natori-shi, Forestry & Seedling Coops.
- Organized 160 member study tour to damaged coastal forest sites in Natori-shi on 30 Oct. 2011, supported by ANA, JTB Tokyo and Nikkei BP
- Research with Niigata University professors on effects of tide water damage etc on the field.



**Planning**

### Coastal Forests Restoration Plan

OISCA supports the tsunami-affected residents through the Association for Earthquake Disaster Restoration in East Natori City.

↓

Cooperation among interesting parties to restore coastal forests of 100 ha in Natori-shi

↓

To realize the restoration, 500,000 seedlings, mainly of harmful-insect resistant Japanese black pine be raised

↓

These seedlings will be raised by the tsunami-affected residents. OISCA's role is to support them as much as possible



Field visit to skilled seedling grower's nursery as a practical training to Natori residents , September 2011



Harmful-insect Resistant Japanese Black Pine



A sample of container seedling



Raising of 500,000 seedlings of Japanese black pine and other species will begin at a site near Sendai Airport in Natori-shi in March 2012. Coastal forest restoration is about to move ahead!

Collecting soil from the nursery beds for testing of ingredients



**Action begins in March !**

OISCA has decided to work with ambitious Natori citizens to produce healthy seedlings that are essential to restore coastal forests with clean sands and green leaf trees.

**Thank you for your attention !**

OISCA

Tokyo-Mitsubishi UFJ Bank,  
Eitokucho Branch  
Account No. 0054080  
Account Name:  
公益財団法人オイスカ  
(Koeki Zaidan Hojin OISCA)

Postal remittance  
001400-482316  
海岸林再生財団  
(Kaiganrin saisei bokin)