



# **International Seminar on REDD**

**Tokyo, 10-12 March 2010**

## **Lessons Learned & Challenges from the Implementation of ITTO REDDDES Program**

by

**Ma Hwan Ok, Projects Manager**

**INTERNATIONAL TROPICAL TIMBER ORGANIZATION (ITTO)**



# Outline

---

- ITTO at work
- ITTO REDD+ Demonstration Projects
  - **REDDES**: Reducing Deforestation and Forest Degradation and Enhancing Environmental Services
  - A Public-Private Partnership to Promote REDD +
- Lessons learned and Conclusions



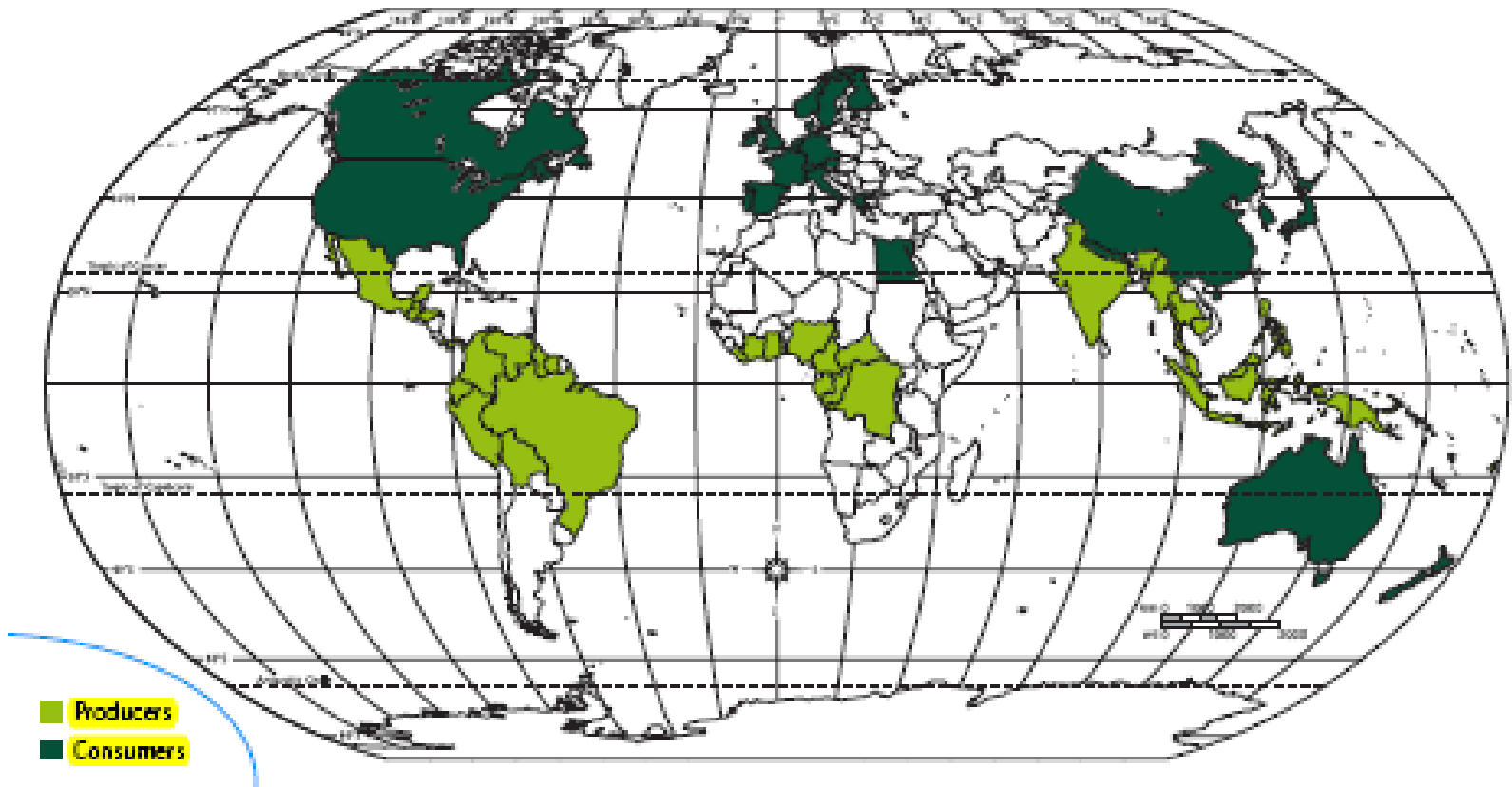
# The INTERNATIONAL TROPICAL TIMBER ORGANIZATION (ITTO)

- an **intergovernmental organization** established under the auspices of the UNCTAD in 1986 to operate **International Tropical Timber Agreement (ITTA)**, legally binding agreement;
- is based in Yokohama, Japan;
- is promoting the **conservation and sustainable management, use and trade** of tropical forest resources;
- is governed by **ITTC** (Council)





## ITTO MEMBERS (60): Producer (33) & Consumer (27)

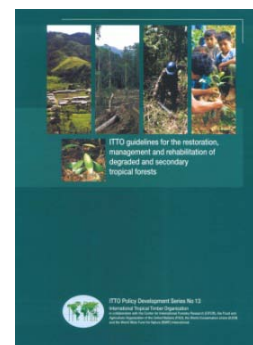
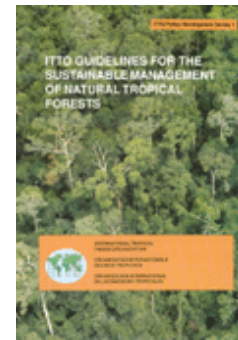


- ▶ 80% of the world's tropical forests
- ▶ 90% of the world's tropical timber trade <sup>4</sup>

# Achieving the Objectives of the ITTA



- Policy work (i.e. guidelines, tools)
- Project work (capacity building)





## DONORS to ITTO

---

Since 1987, funded 940 projects, pre-projects and activities valued at more than US\$340 million to build capacity of ITTO producer member countries towards the achievement of SFM

Main donors for project work and other activities:



Japan



Switzerland



United States



Norway



The Netherlands

# ITTO Thematic Programme on REDDES

---



## General objective:

To reduce deforestation and forest degradation, enhance environmental services and help improve forest dependant livelihoods through sustainable management of tropical forests, and forest restoration

## Specific objective:

**To strengthen the capacity of ITTO developing member countries and their stakeholders to:**

- reduce **unplanned deforestation**
- reduce **forest degradation**
- maintain and enhance **climate change mitigation and other environmental services** of tropical forests; and
- contribute to the **social and economic sustainability** of forest-dependent communities

# ITTO REDDES Demonstration Projects

- 
1. Monitoring Pan-Amazonian forest (Brazil)
  2. Social processes for SFM (Guatemala)
  3. Resources assessment & monitoring (Guyana)
  4. Communities and PES (Peru)
  5. Carbon stock inventory (Dem Rep Congo)
  6. Collaborative management for REDD (Ghana)
  7. PES in degraded/secondary forests (China)
  8. SFM to enhance carbon stocks (Indonesia)
  9. REDD in south Sumatra peatland (Indonesia)
  10. Voluntary carbon marketing scheme (ITTO)

**Total allocation 2009: USD 4 million**





# Monitoring Pan-Amazonian Forest (Brazil) (1)

## Monitoring deforestation, logging and land use change in the Pan Amazonian Forest – PANAMAZON II

### ■ Executing Agency:

**AMAZON  
COOPERATION TREATY  
ORGANIZATION (ACTO)**

### ■ Duration & Budget:

**4 Yrs (Mar 2010-Feb 2014)**

**Total: US\$ 7.873.244**

ITTO (1.050.320), ACTO  
(356.854), ACTO MEMBER  
COUNTRIES (1.808.000),  
OTHERS (FUNDO  
AMAZONIA; 4.658.070)



*Seven ACTO Members Countries for the project*



# Monitoring Pan-Amazonian Forest (Brazil) (2)

---

## ■ Outputs

### Outputs 1:

**National plans** for the implementation of a forest cover monitoring system prepared

### Outputs 2:

National Plans for **forest cover monitoring system** implemented

### Outputs 3:

Spaces for **regional dialogue and coordination** on forest management harmonized and other C&I strengthened



# Carbon Stock Inventory in DR Congo



## Complementary to UN-REDD

### ■ Executing Agency:

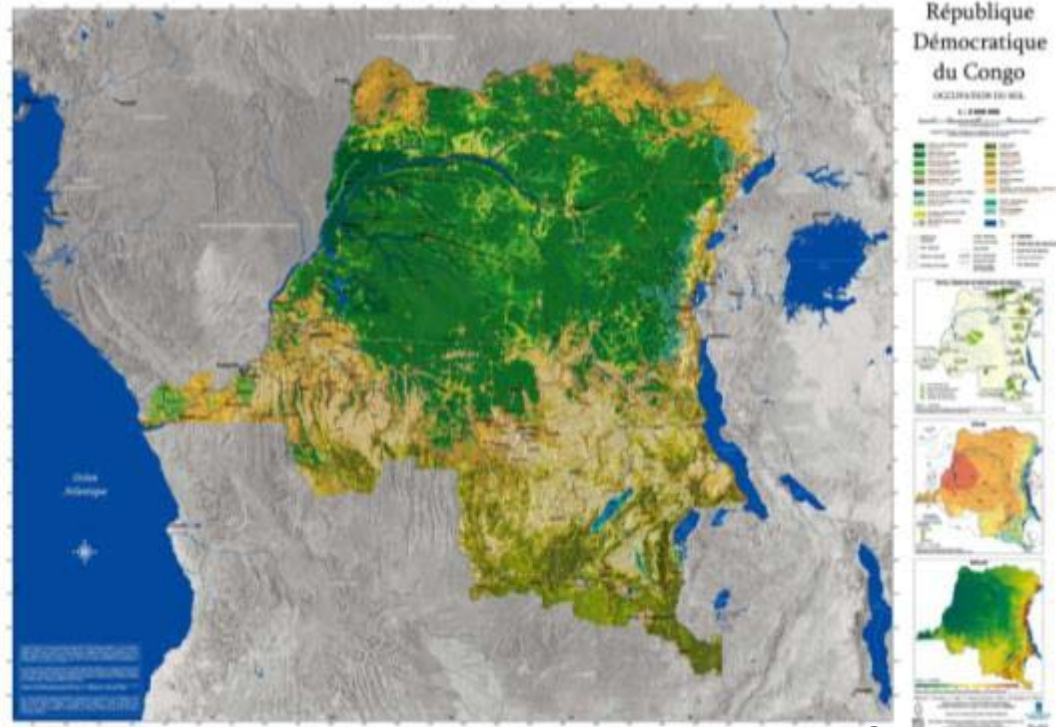
Dep of Inventory and Forest Management (DIAF)

### ■ Duration & Budget:

- 1 yr (Mar 2010-Feb 2011)
- US\$476,000

### ■ Project Outputs:

- 1) 70 - 80 technicians of the DIAF, DDD (and other partners) are formed to execute the national forest carbon inventory
- 2) Acquisition, set up and distribution of equipments to operate the national forest carbon inventory



*60 mil ha Production Forest in DR Congo*

Technical guidance from the on-going ITTO Project

***“Multispectral Three-Dimensional Aerial Digital Imagery for Monitoring SFM in Congo”***



# SFM to enhance carbon stocks in Indonesia

---

- **Executing Agency:**

DG of Forest Production Development, MoF

- **Duration & Budget:**

2 yrs (April 2010-Mar 2012), US\$535,000

- **Specific Objective:**

To develop national strategy to maintain and increase forest carbon stock through SFM

Completed ITTO project “**Internal Monitoring of SFM Performance at Forest Management Unit Level** [PD 389/05 Rev. 2 (F)]” will complement



# REDD in South Sumatra Peatland in Indonesia

## ■ Specific Objectives:

to enhance conservation and restoration of Peat Swamp Forest ecosystems in South Sumatra

## ■ Expected Outputs:

- I. Institutional setting to prevent further deforestation and forest degradation
- II. Sound and applicable technology in restoration and rehabilitation of PSF
- III. Demonstration activities with the plantation of indigenous species





# REDD-DES Proposals in Asia-Pacific (Pipeline)

---

Country	Title
Cambodia	REDD Capacity Building
Philippines	Promoting REDD through community participation in Calabarzon region
Indonesia	Development of carbon certification system in Indonesia
PNG	Multipurpose National Forest Inventory (MNFI)

**ITTO REDD-DES Cycle Calendar for 2010** will be available in March 2010

# ITTO Partnerships in Support to Countries

---

## COUNTRY LEADERSHIP

1. Reducing emissions from deforestation
2. Reducing emissions from forest degradation
3. Conservation of carbon stocks
4. Sustainable management of forests
5. Enhancement of carbon stocks

**Supporting REDD +**

- CPF Strategic Framework on F&CC
- UN-REDD
- FCPF
- FIP
- Other initiatives

**Harnessing synergies**

# A Public-Private Partnership to promote REDD



(Japan)

**Asia : Indonesia (under implementation)**

**Africa : Gabon (under project identification)**

**Latin America : Brazil (under project identification)**

# A Public-Private Partnership to promote REDD + REDD Conservation Project in Indonesia

## Meru Betiri National Park, Java



**Executing Agency:**

**FORDA, MoF**

**Duration & budget**

**4 yrs (Jan 2010-Dec 2014)**

**ITTO - US\$900,000**

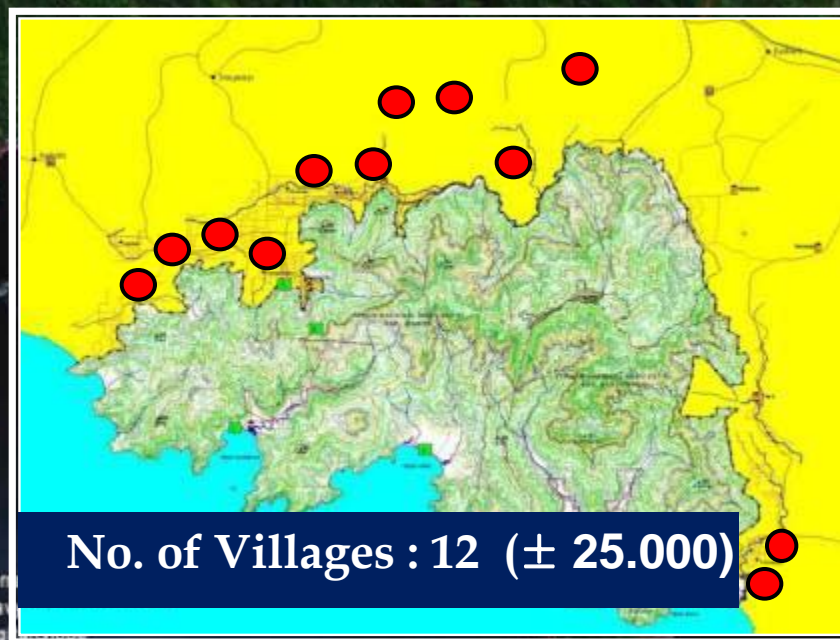
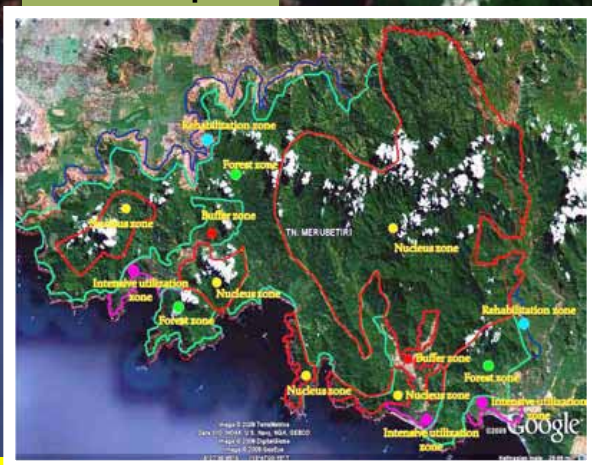


**Ceremony at Indonesian Embassy (Tokyo, Oct 2009)**



# REDD Conservation Project in Indonesia

Land use plan



Meru Betiri NP, Java

# REDD Conservation Project in Indonesia

## Illegal Activities in Meru Betiri NP



Rotan



Bambu



Penyu & Telur



Primata



Jukung



Kayu Pertukangan



Burung



# REDD Conservation Project in Indonesia: Challenges

- ▣ To develop a robust **measurable, reportable and verifiable (MRV) system** for monitoring REDD and enhancement of forest carbon stocks in Meru Betiri National Park (MBNP)
- ▣ To improve the **livelihoods of local communities** living inside and in the surrounding area of MBNP through participation in avoiding deforestation, degradation and biodiversity loss



# Lessons learned from forest monitoring

---



- No system in place at national and FMU levels for comprehensive **forest monitoring** in many countries in the tropics
  - reliable and comprehensive RS data is lacking
  - credible and internationally accepted methodologies for using high-resolution imagery for forest management not yet established
  - local capacity in image capture and processing is weak
- Need to reinforce the **capacities of national institutions** for the development of REDD/MRV system
  - more guidebooks/manuals on how to operate forest monitoring
  - governments, NGOs and private-sector companies need a mechanism to work together on issues of common concerns

# Conclusions

---



- **Country needs** and constraints are paramount
- ITTO has **a long track record** of working with member countries to help put policies into practices and promote SFM activities
- The REDDES Program is on **fast track** to assist 36 ITTO developing member countries
- **Cooperation** with other REDD initiatives such as UN REDD, FCPF and bilateral programmes will enhance synergies and complementarity
- Support of donors and partners including Forest Agency of Japan will enable **ITTO** to further contribute to **REDD/MRV** and meet **international reporting needs**



**Thank you for your attention**

[ma@itto.int](mailto:ma@itto.int)

[www.itto.int](http://www.itto.int)