

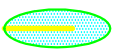
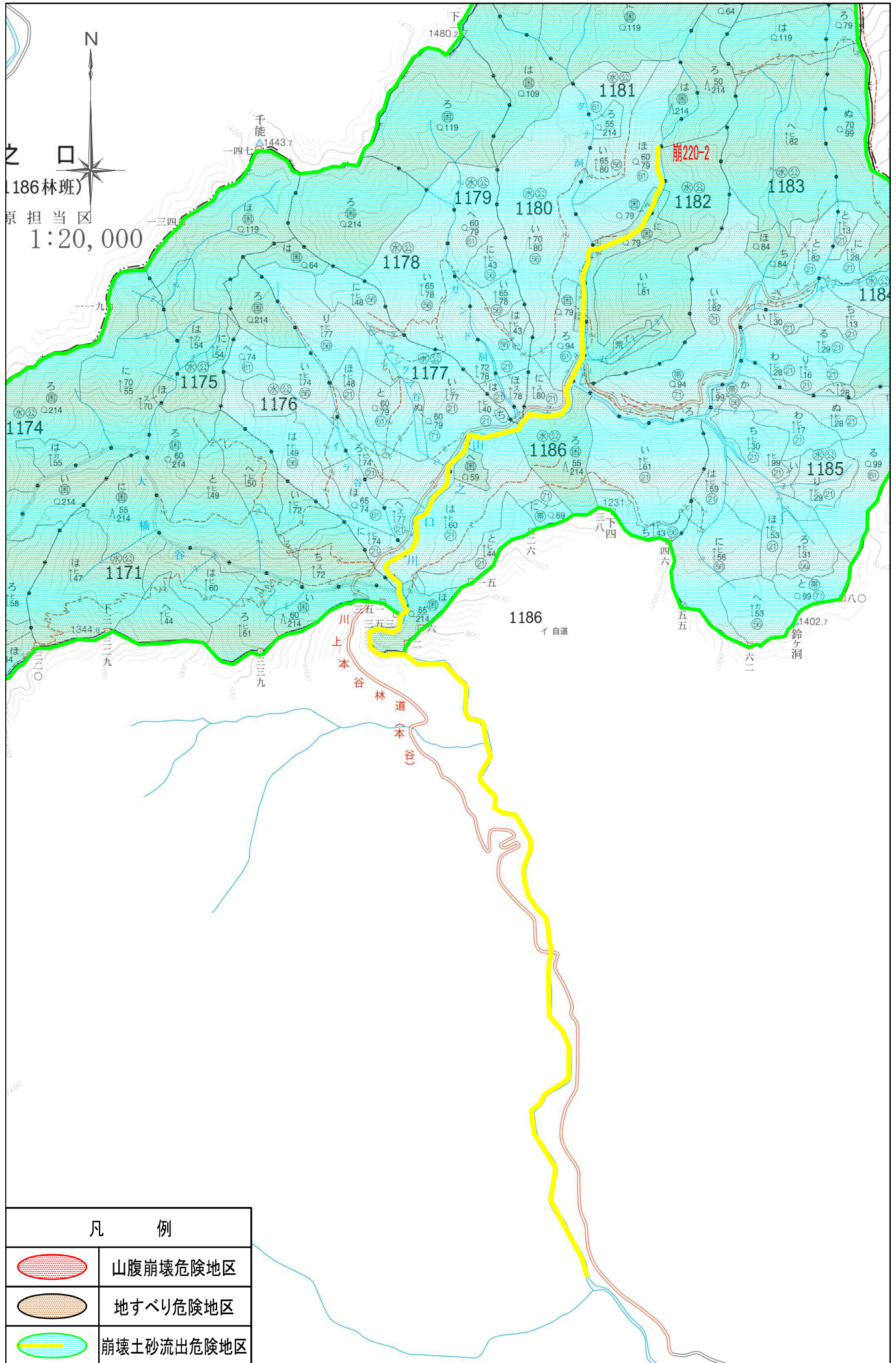


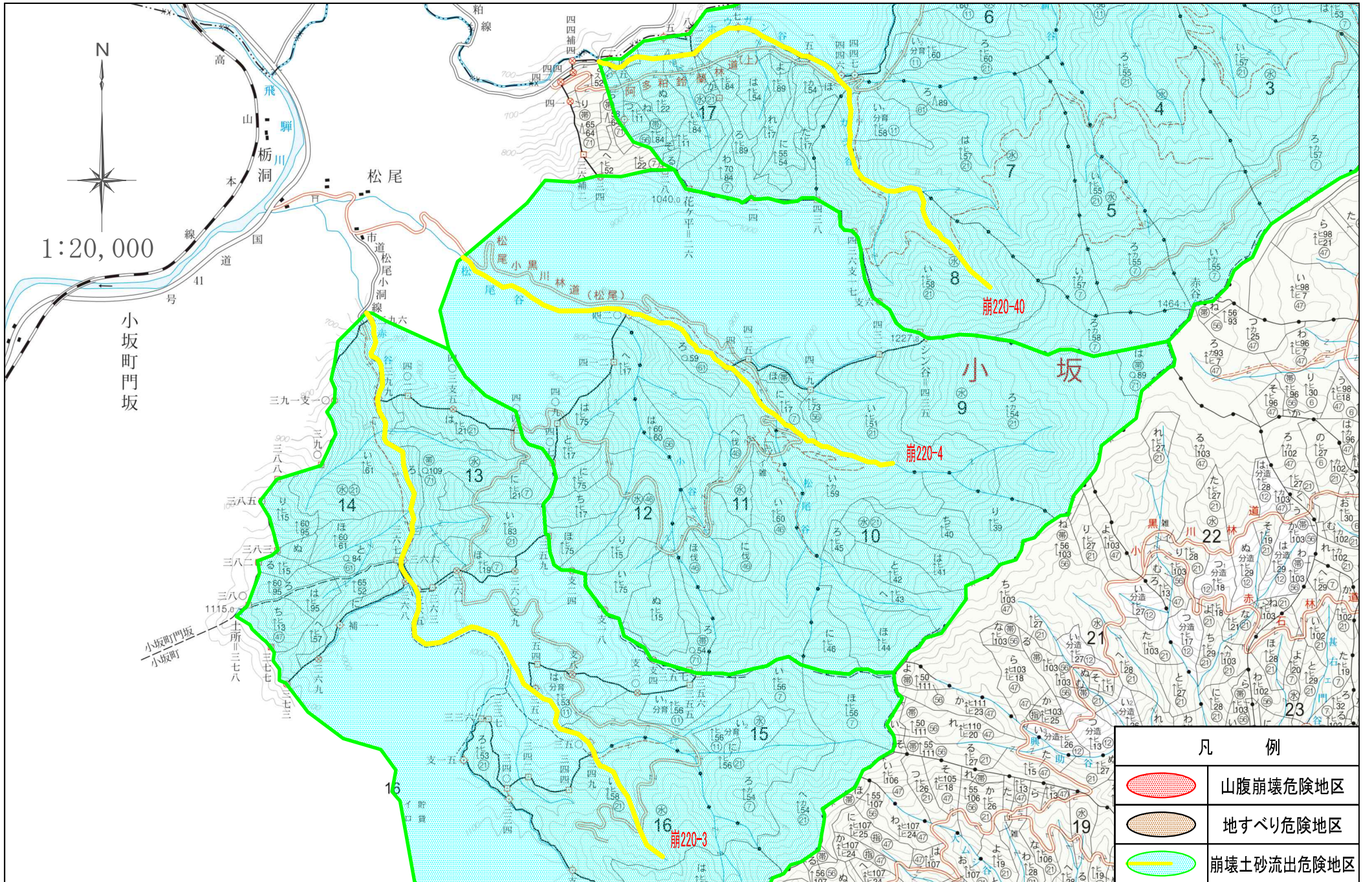
市
1:20,000

落 合
(18~45林班)
小黒川 担 当 区

落 合
(46~80林班)
濁 河 担 当 区



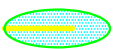
凡 例	
	山腹崩壊危険地区
	地すべり危険地区
	崩壊土砂流出危険地区





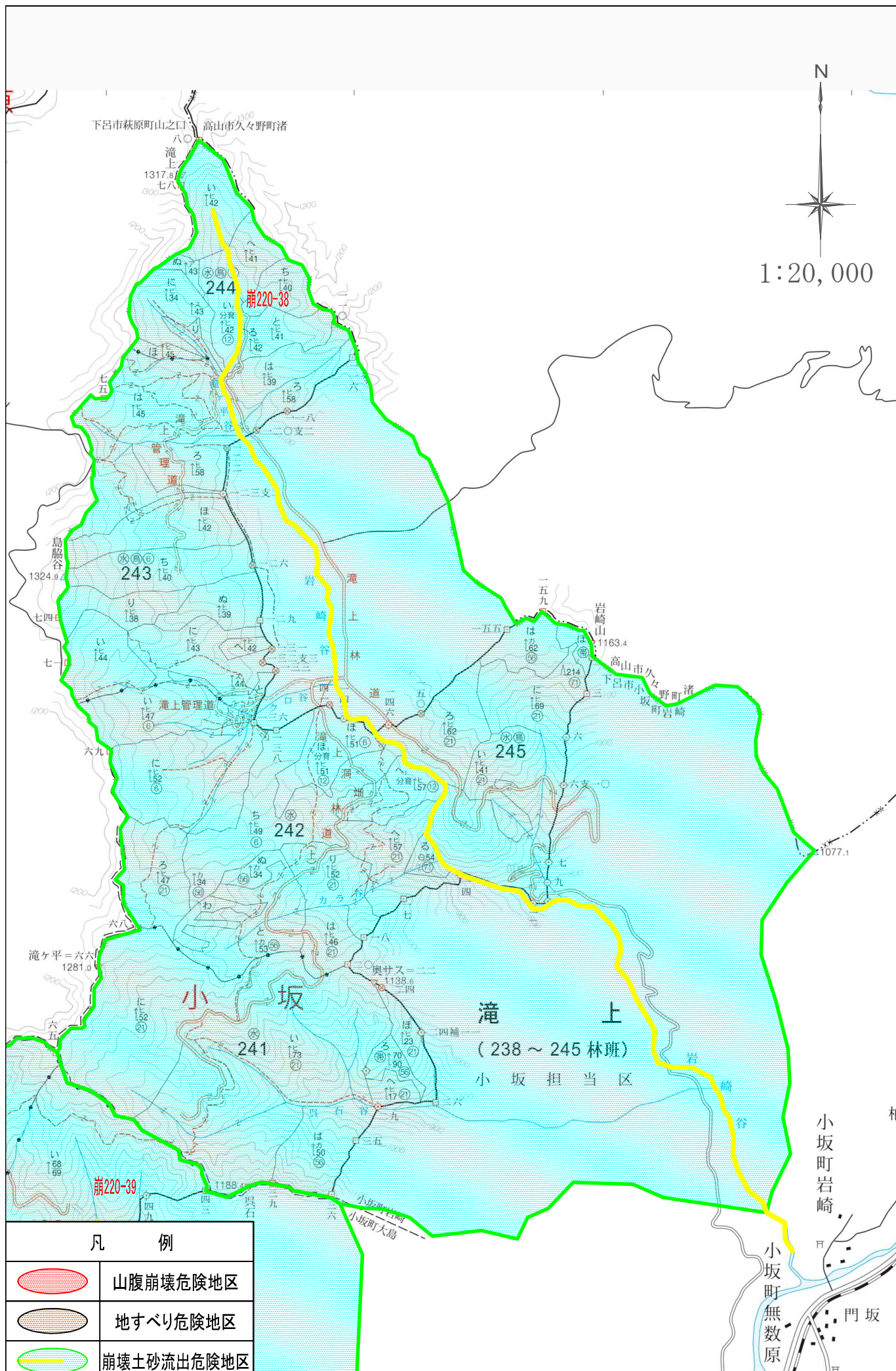
小坂町門坂

凡 例

	山腹崩壊危険地区
	地すべり危険地区
	崩壊土砂流出危険地区

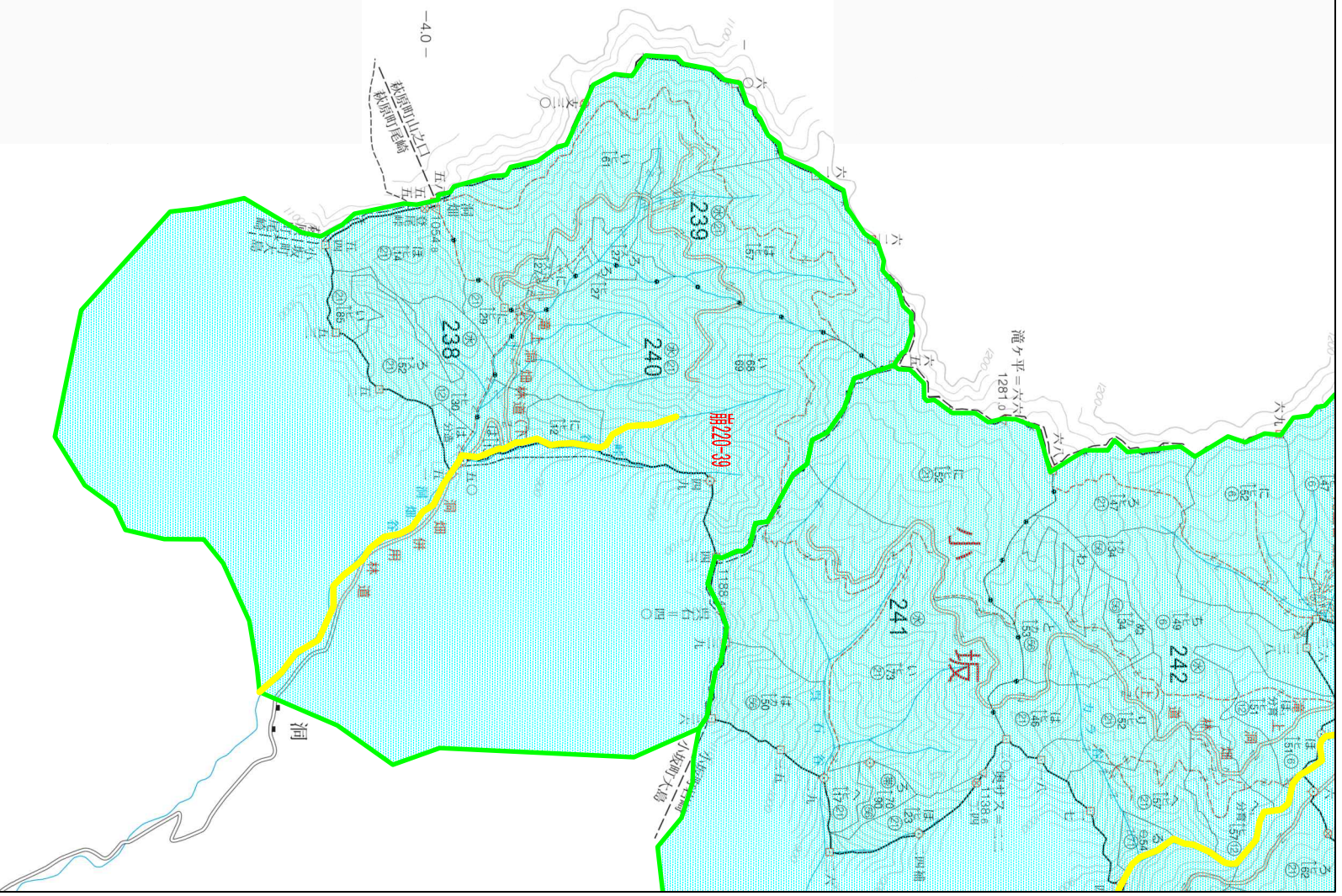
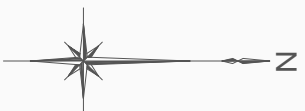


1:20,000

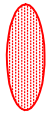




凡 例	
	山腹崩壊危険地区
	地すべり危険地区
	崩壊土砂流出危険地区

1:20,000



凡 例

	山腹崩壊危険地区
	地すべり危険地区
	崩壊土砂流出危険地区